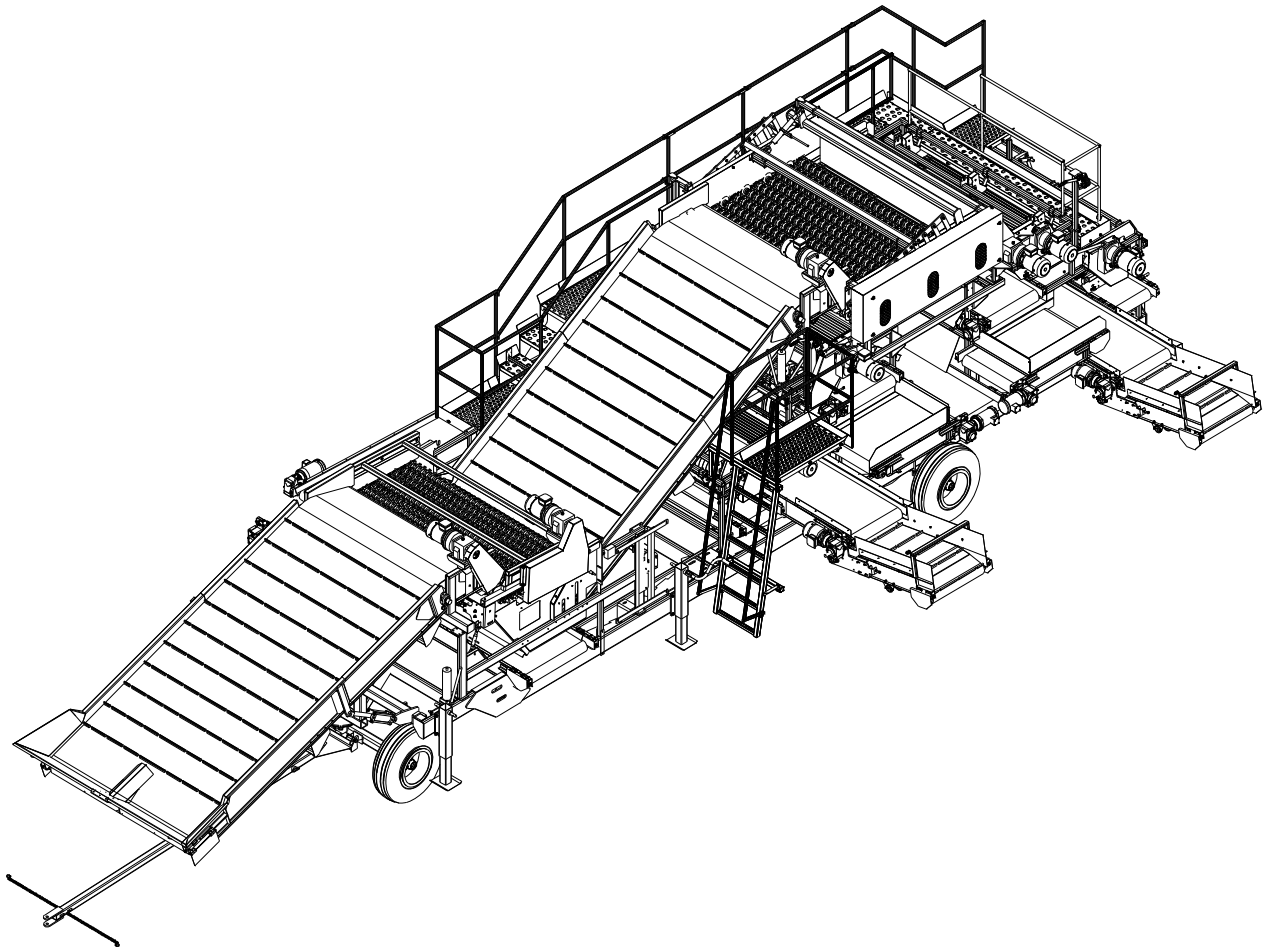


Harriston Industries



4240 CLOD HOPPER ILLUSTRATED PARTS MANUAL

Introduction

To ensure optimum performance and safety, always purchase genuine **Harriston** replacement parts and accessories. NEVER USE "WILL-FIT" REPLACEMENT PARTS AND ACCESSORIES MADE BY OTHER MANUFACTURERS. Using either inappropriate or unapproved replacement parts or accessories may result in progressive damage to the Clod Hopper and also voids the warranty.

This manual provides a listing to the parts and assemblies that are available as replacement parts.

The illustrations used in this Parts manual are for reference to replacement parts only. This manual is not to be used for assembly. If in need of replacement parts or in need of a replacement part not called out in this manual, contact the Parts Department at:

Harriston Industries

Box 378, Minto, ND 58261

(800) 437-8205 (701) 248-3286

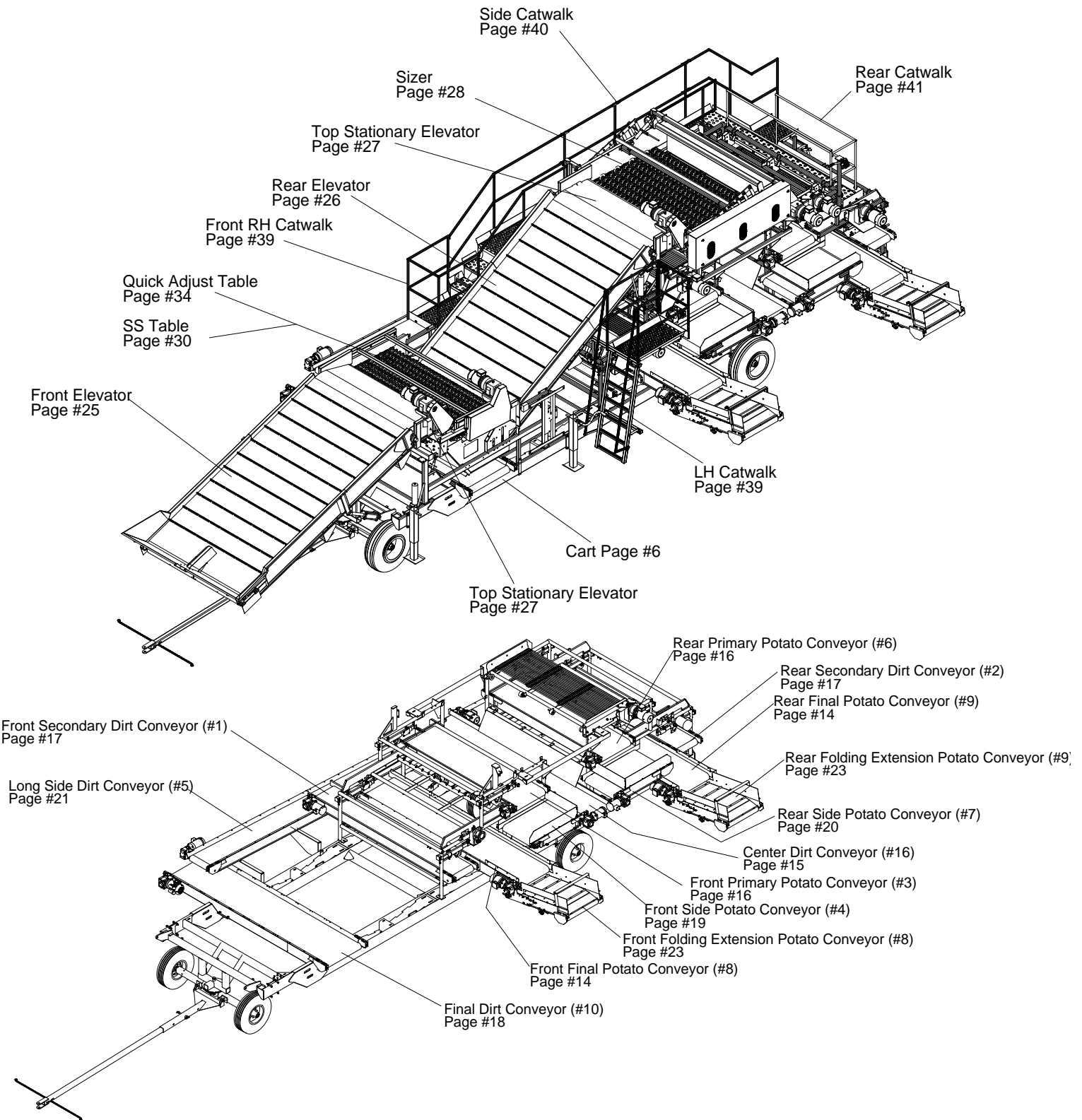
Fax: (701) 248-3070

Notes

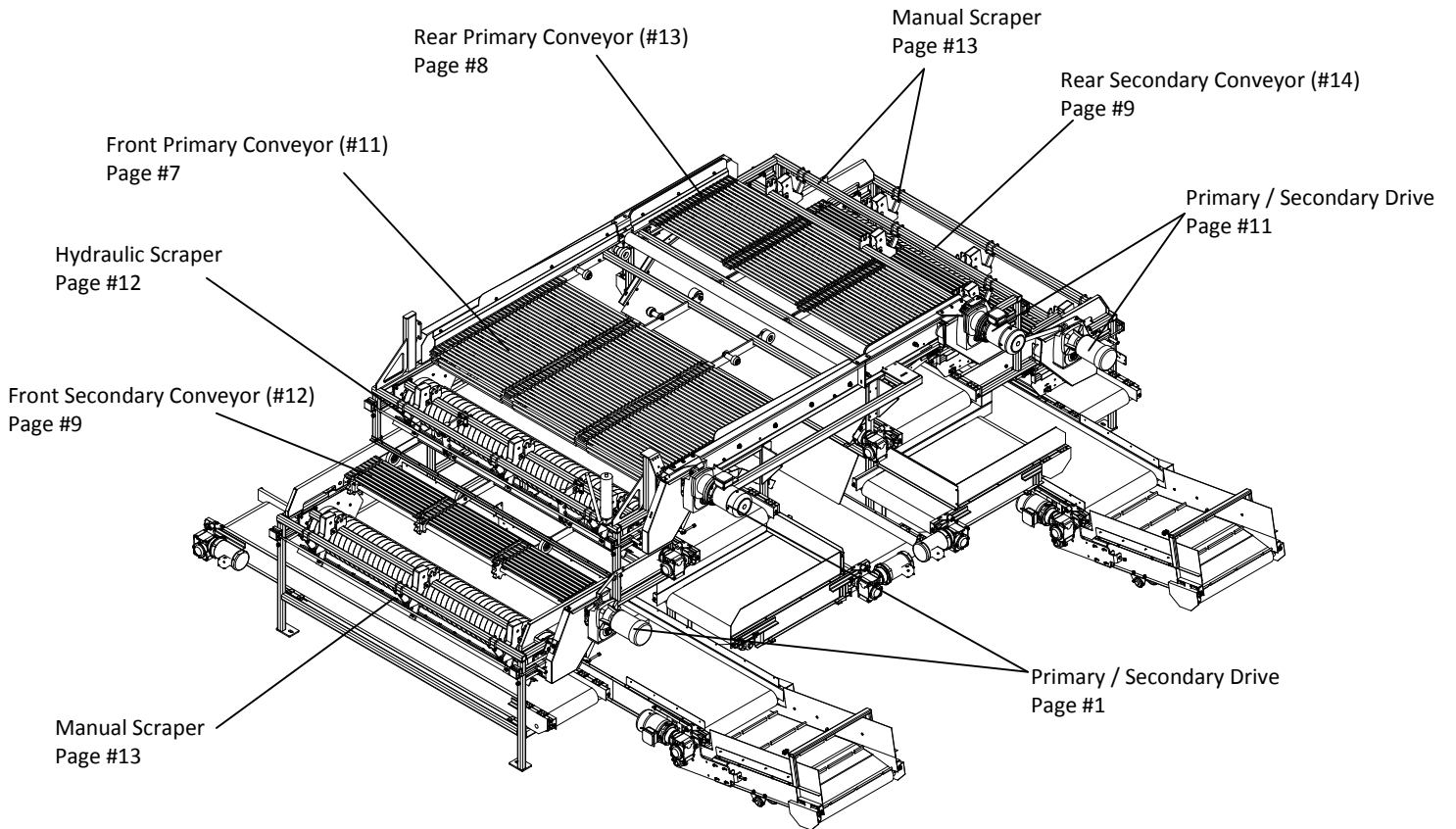
Table of Contents

Introduction	1
Table of Contents	3
Visual Table of Contents	4
Cart Assembly (430840)	6
Front Primary Conveyor (430125)	7
Rear Primary Conveyor (430905).....	8
Front and Rear Secondary Conveyors	9
Roller/Divider Adjustments	10
Primary / Secondary Drive.....	11
Hydraulic Scraper	12
Manual Scraper	13
Lower Cross Potato Conveyor (460525)	14
Center Cross Dirt Conveyor (460528)	15
Top Cross Potato Conveyor (460500)	16
Secondary Final Dirt Conveyor(460545).....	17
Final Cross Dirt Conveyor (431230)	18
Front Side Clean Potato Conveyor (455605)	19
Rear Side Clean Potato Conveyor (452320).....	20
Side Dirt Conveyor (455596)	21
30" x 18" Conveyor Extension (456062)	22
Folding Conveyor Extension (451350)	23
Optional 36" x 36" Conveyor Extension (456069).....	24
Front Elevator (431960)	25
Rear Elevator (431961).....	26
Top Stationary Elevator (431938)	27
Eleven Row Sizer (431020).....	28
SS Table (431000)	30
Quick Adjust Table (431180).....	34
Optional Pegbelt and Blower Drive (4551).....	36
Optional Pegbelt (430990)	37
Optional Blower (459800).....	38
Catwalks	39
Electrical	42
Motors, Gearboxes, and Conveyor Specifications	43

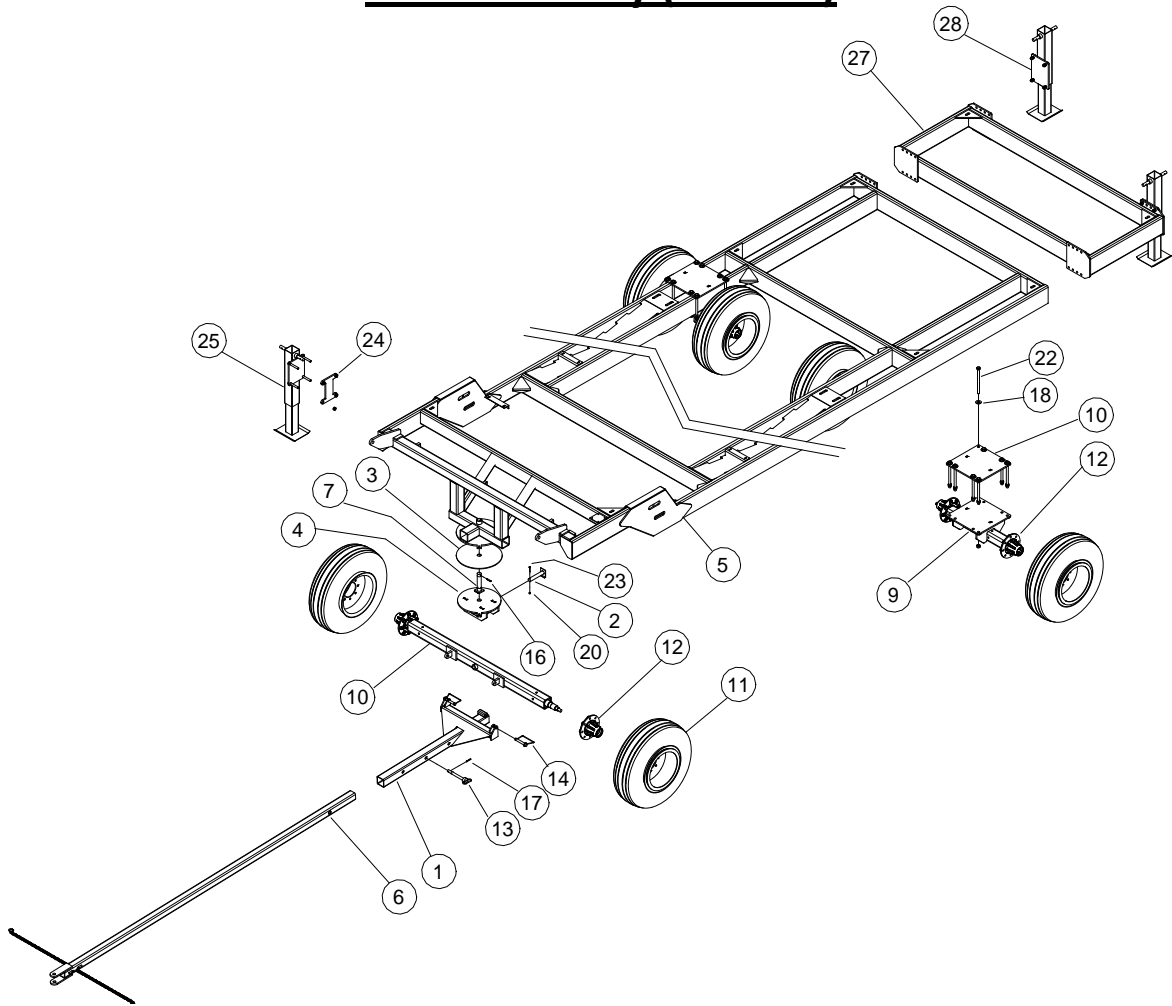
Visual Table of Contents



Visual Table of Contents



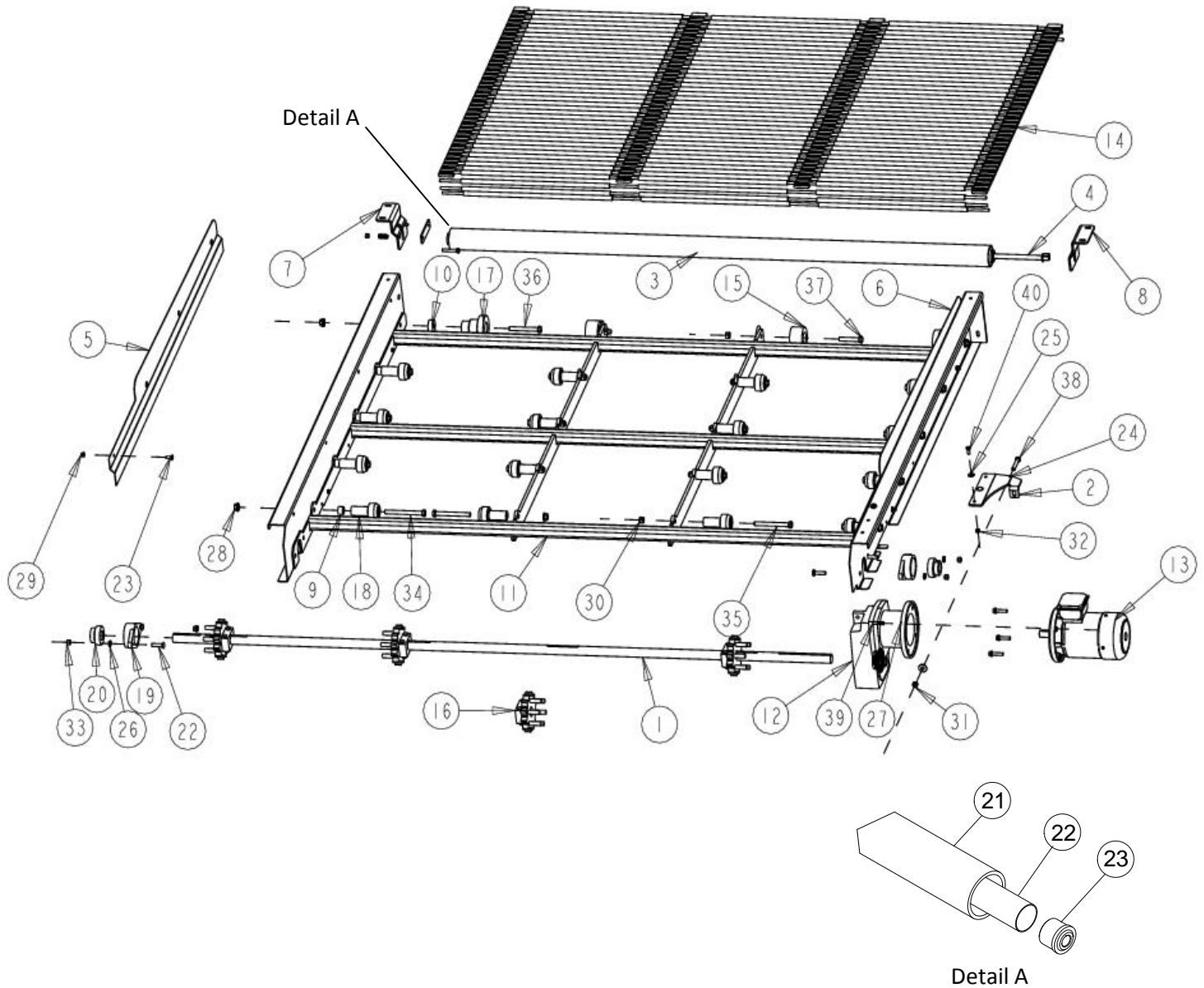
Cart Assembly (430840)



Item	Part No.	Description
1	470270	Hitch
2	457815	Axle Pin
3	430867	Pivot Disk
4	430865	Axle Yoke
5	430850	Cart Weldment
6	430845	Hitch, Pole
7	430837	Hitch Pivot Pin
8	430070	Front Axle Assembly
9	430060	Tandem Axle
10	430052	Axle Plate
11	96275	Tire/Rim Assembly
12	94226	Hub
13	53014	Hitch Pin
14	21550	Lock Pin

Item	Part No.	Description
15	21350	Bushing, 1 1/2
16	20970	Roll Pin, 3/8" x 2
17	20967	Roll Pin, 1/4 x 2
18	20517	Washer, 3/4"
19	20507	Lock Washer, 3/4"
20	20421	Centerlock Nut, 1/4"
21	20407	Nut, 3/4"
22	20157	Bolt, 3/4" x 11
23	20005	Bolt, 1/4" x 2
24	455702	Jack Plate
25	431772	Front Jack
NS	431771	Center Jack
27	455576	Rear Cart Weldment (4240)
28	431770	Rear Jack

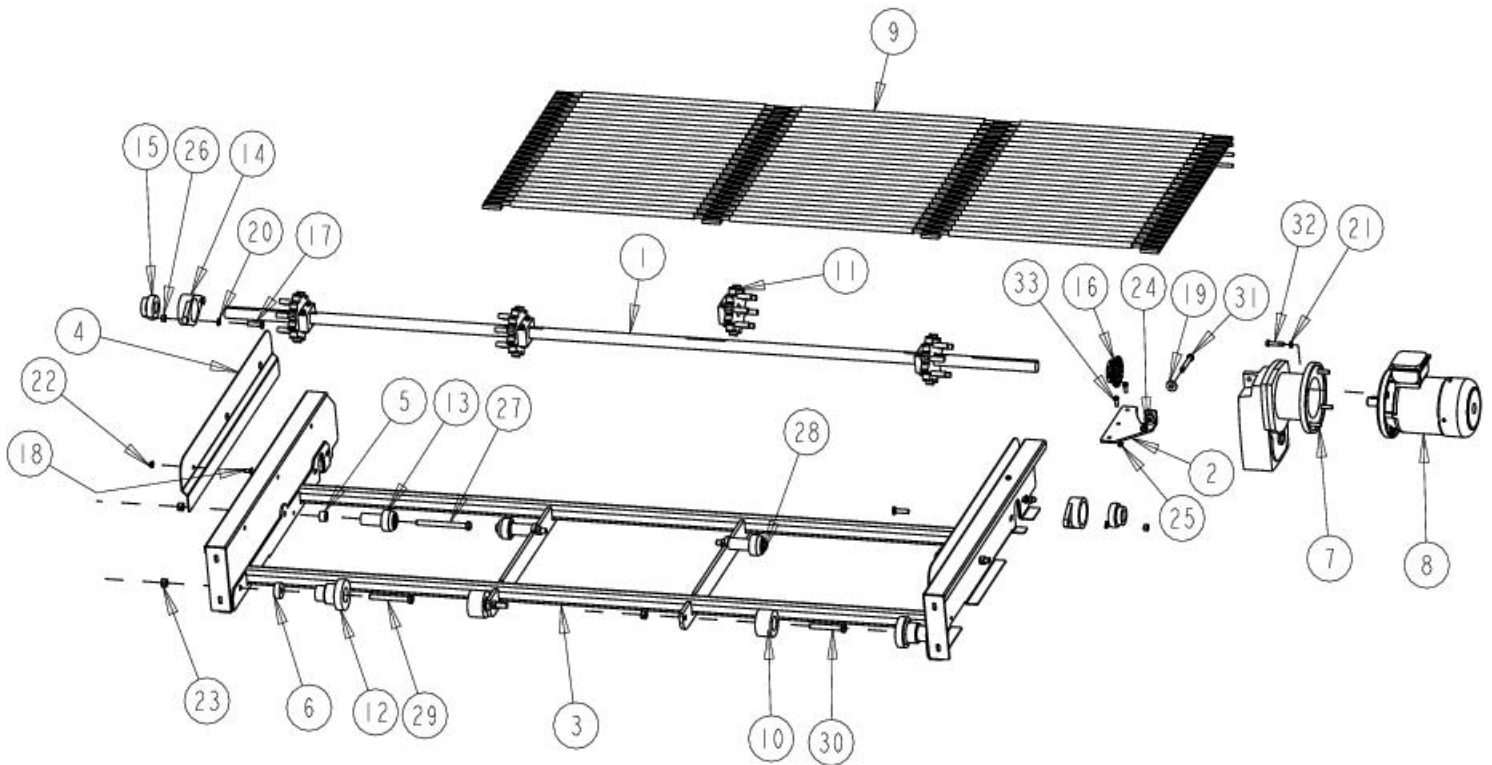
Front Primary Conveyor (430125)



Item	Part No.	Description
1	460276	Shaft- Primary- 11 Row
2	431331	Brace- Primary Gearbox
3	430415	Assembly- 2" Elevator Roller
4	430410	Weldment- Retaining Rod 36"
5	430409	Shield- Front Primary-Inner RH-11R
6	430408	Shield- Front Primary-Inner LH-11R
7	430405	Assembly- Primary Divider Lock
8	430402	Mount- Primary Divider Tube
9	430122	Spacer- Idler Roller Assembly
10	430121	Spacer- Thick Belt Roller
11	430115	Frame- Primary- 11 Row
12	94588	Gearbox- Helical Drive

Item	Part No.	Description
13	94419	Motor 3 Phase 3 Hp
	94414	Motor 1 Phase 3 Hp
14	94201	Belt- Front 11 Row Primary
15	94067	3-1/2" Rubber Roller RBRRU2
16	94063	RD Bore BLTD Sprocket
17	94062	Roller- Thick Belt
18	94060	Assembly- Idler Roller 2-11/16" Long
19	82205	2 Bolt FL Housing
20	82046	Bearing- 1-1/2" Bore Spherical-Sealed
21	431178	Roller- Primary Separator
22	430416	Roller - 2"
23	94019	Roller End- 3/4"

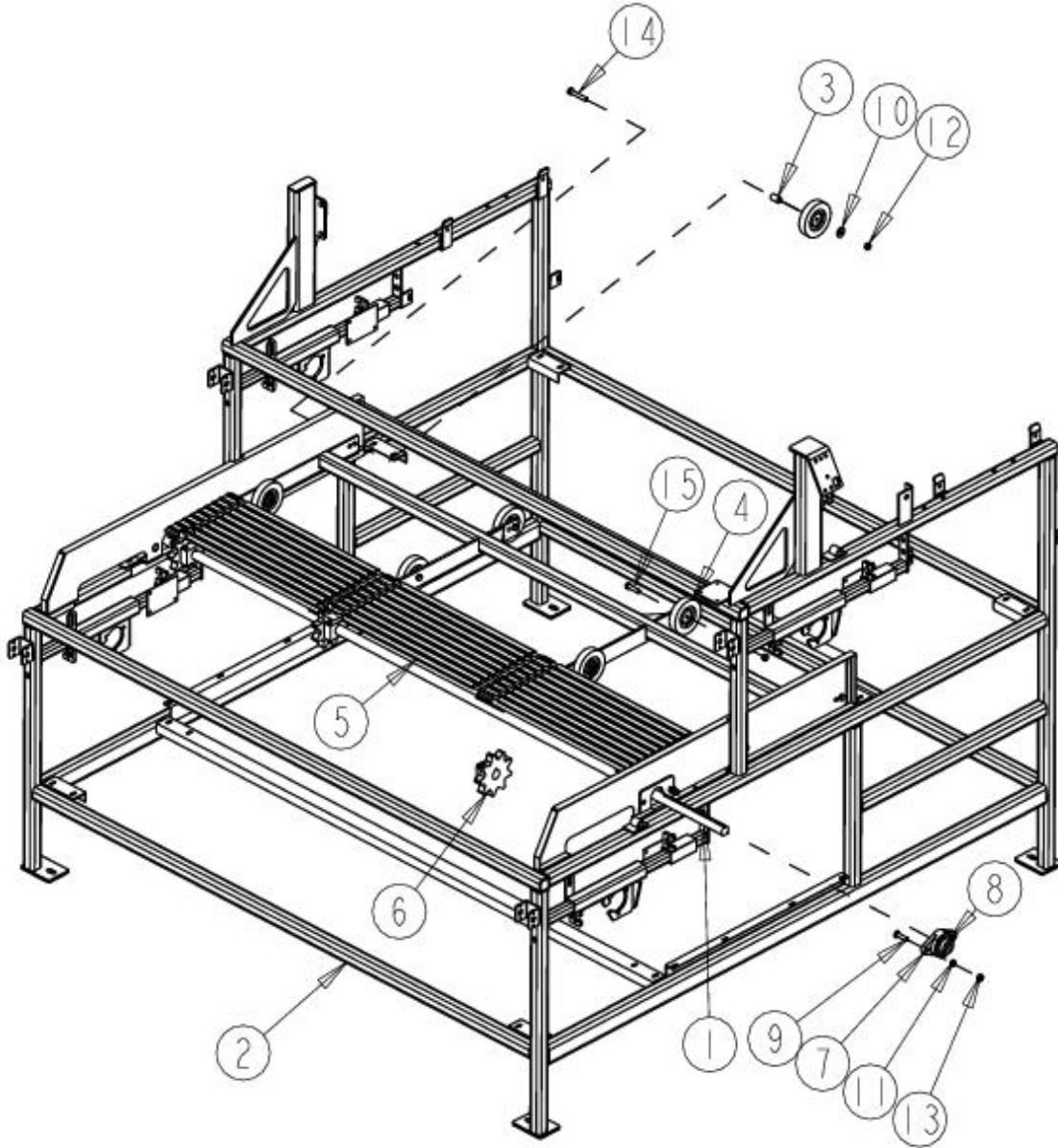
Rear Primary Conveyor (430905)



Item	Part No.	Description
1	460276	Shaft- Primary- 11 Row
2	431335	Brace- Front Primary Gearbox
3	430910	Frame- Rear Primary- 11 Row
4	430907	Shield- Rear Primary- Inner- 11 Row
5	430122	Spacer- Idler Roller Assembly
6	430121	Spacer- Thick Belt Roller
7	94588	Gearbox- Helical Drive
8	94419	Motor- 3 HP 3 Phase
-	94414	Motor- 3 HP 1 Phase
9	94202	Belt- Rear 11 Row Primary
10	94067	3-1/2" Rubber Roller RBRRU2
11	94063	Sprocket- Belted Chain
12	94062	Roller- Thick Belt- R41NSDDB2
13	94060	Assembly- Idler Roller- R27AAD2 2-11/16"
14	82205	2 Bolt FL Housing 5663-080MM
15	82046	1-1/2" Bore Spherical Sealed Bearing
16	81224	6015 X 1 1/2" Finished Bore- 3/8" Key.

Item	Part No.	Description
17	20768	Bolt, 1/2 x 2 Carriage
18	20628	Bolt, 3/8 x 1 Carriage
19	20515	Washer, 1/2 Flat
20	20504	Washer, 1/2 Regular Lock ZP
21	20503	Washer, 7/16 Regular Lock ZP
22	20471	Nut, 3/8 Serrated Flange
23	20427	Nut, 5/8 Centerlock ZP
24	20425	Nut, 1/2" Centerlock ZP
25	20423	Nut, 3/8 Centerlock ZP
26	20404	Nut, 1/2 Hex
27	20075	Bolt, 5/8 x 7" Hex HD
28	20074	Bolt, 5/8 x 6-1/2" Hex HD
29	20072	Bolt, 5/8 x 5-1/2" Hex HD
30	20063	Bolt, 5/8 x 4-1/2" Hex HD
31	20057	Bolt, 1/2 x 3-1/2" Hex HD
32	20042	Bolt, 7/16 x 2 Hex HD
33	20029	Bolt, 3/8 x 1 Hex HD

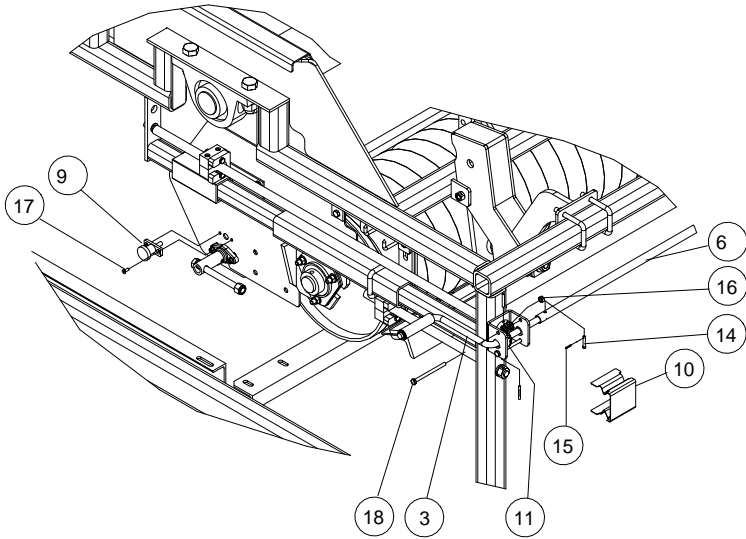
Front and Rear Secondary Conveyors



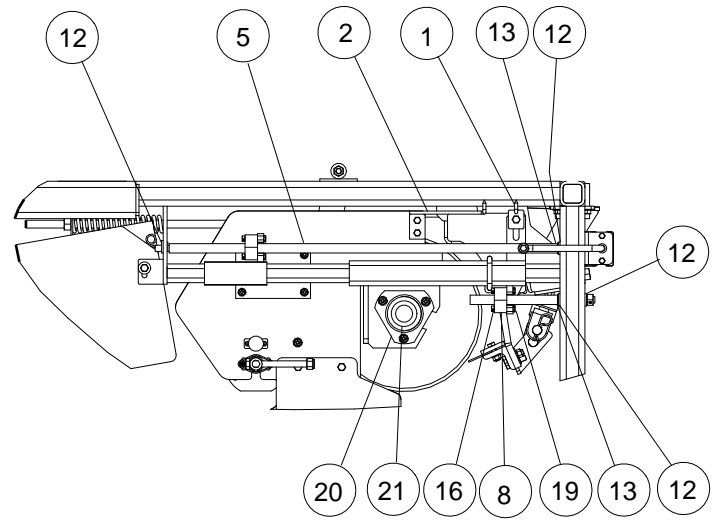
Item	Part No.	Description
1	460295	Secondary Shaft
2	455578	Weldment- Front Frame
	455579	Weldment- Rear Frame
3	452108	Spacer- Secondary Idler
4	96105	5" Idler Roller- 820R
5	94470	40 MM Chain
6	94070	Sprocket- Belted Chain
7	82204	Housing- 2 Bolt Flange

Item	Part No.	Description
8	82044	Bearing- 1-3/8" Bore Spherical
9	20768	Bolt, 1/2 x 2 Carriage
10	20515	Washer, 1/2 Flat
11	20504	Washer, 1/2 Regular Lock ZP
12	20425	Nut, 1/2" Centerlock
13	20404	Nut, 1/2 Hex
14	20056	Bolt, 1/2 x 3" NC Gr. 5
15	20053	Bolt, 1/2 x 2" NC Gr. 5

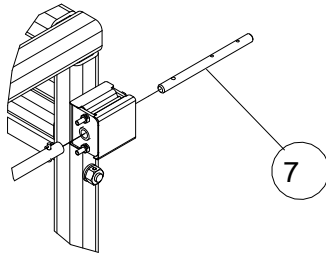
Roller/Divider Adjustments



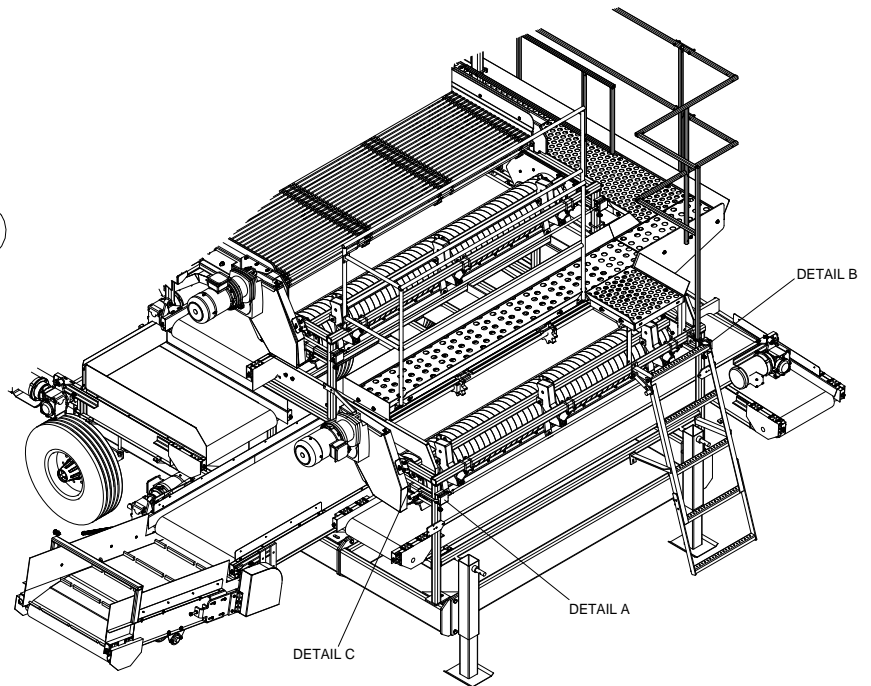
Detail A
Roller/Divider Adjustments



Detail C
Roller/Divider Adjustments



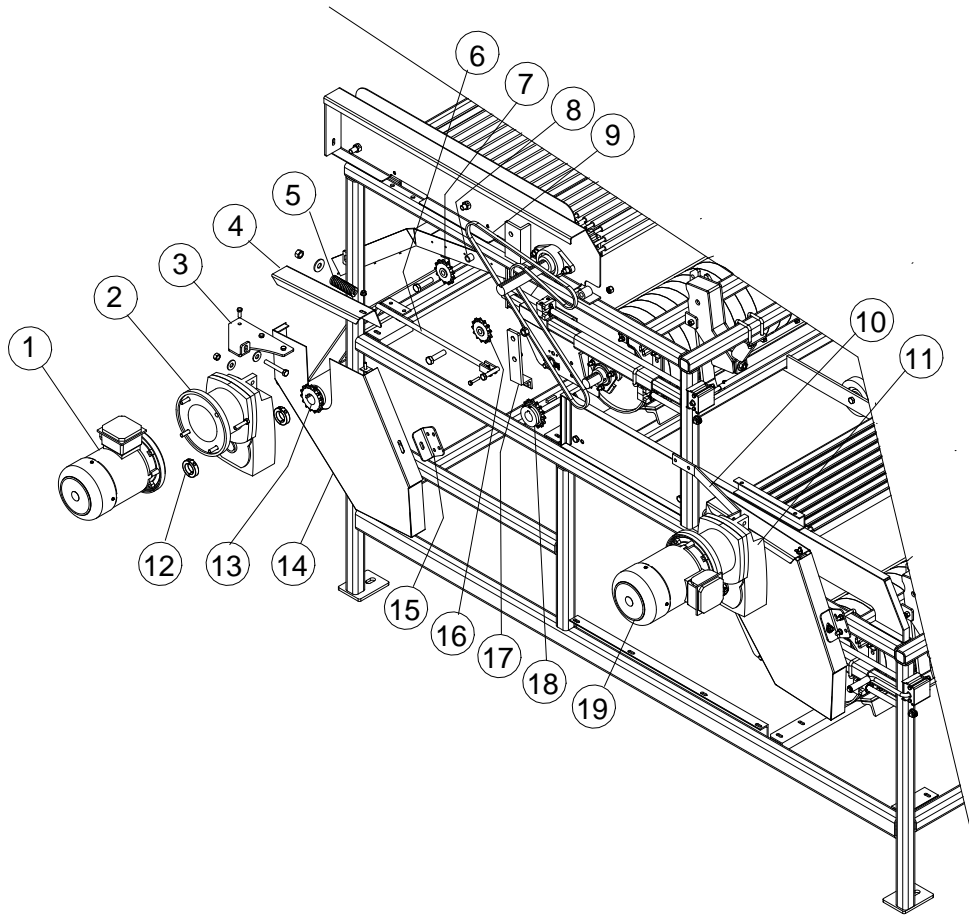
Detail B
Roller/Divider Adjustments



Item	Part No.	Description
1	431814	Roller Indicator
2	431810	Divider Indicator
3	431019	Handle
4	430998	Roller Adjuster
5	430996	Divider Adjuster
6	430979	Connecting Tube
7	430978	Gear Stub Shaft
8	430292	Block
9	94485	Plunger
10	92002	Cover
11	92001	Bevel Gear Set

Item	Part No.	Description
12	21398	Bushing w/ Flange
13	21310	Washer, 1/2" Machine
14	20854	Clevis Pin, 3/16" x 1
15	20820	Cotter Pin, 3/32" x 1/2
16	20421	Centerlock Nut, 1/4"
17	20274	Allen Screw, #10 x 1/2
18	20173	Bolt, 1/4" x 3-1/2"
19	20004	Bolt, 1/4" x 1-1/2"
20	521905	Bearing Flange
21	82044	Bearing, 1-3/8"

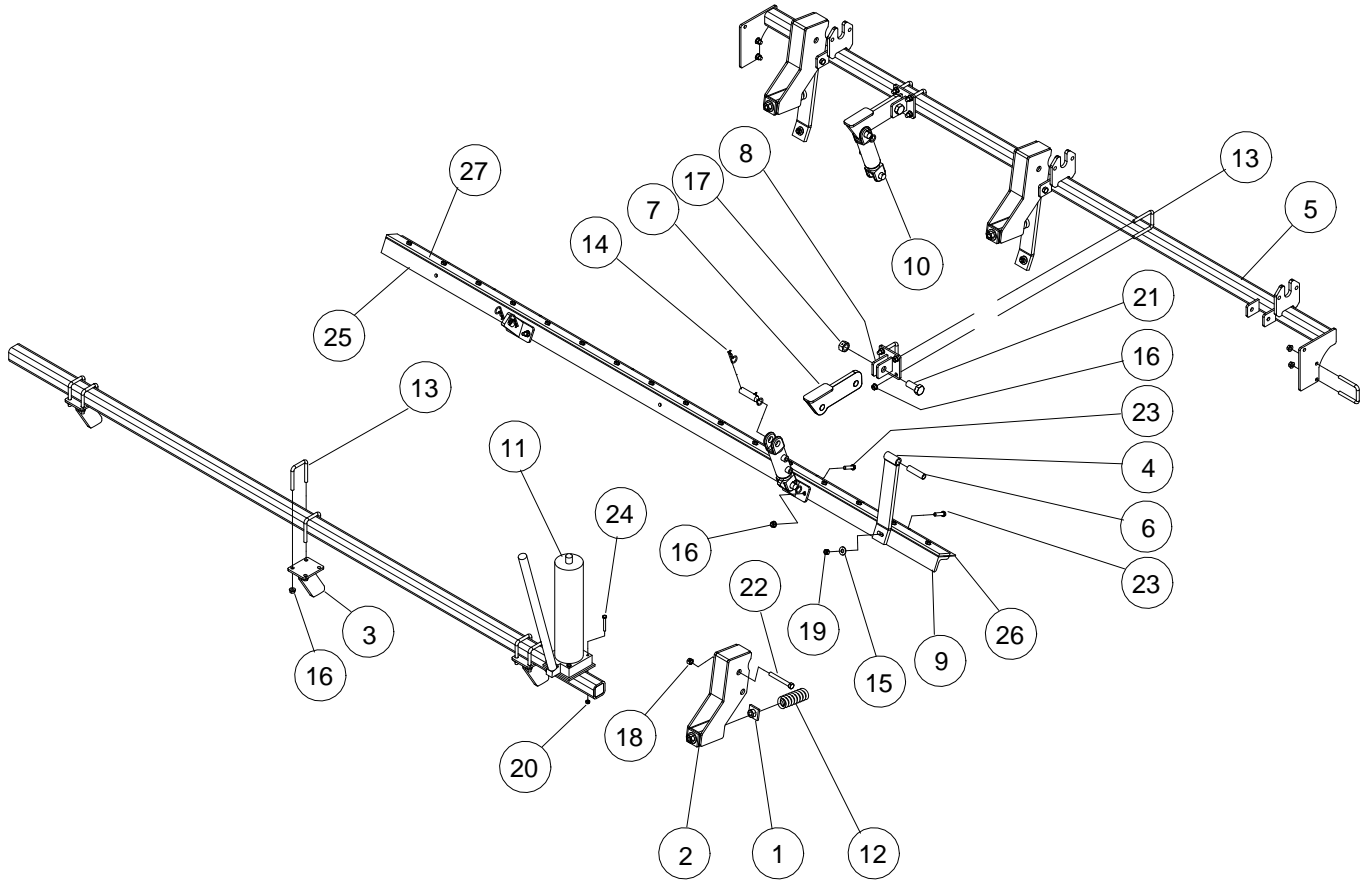
Primary / Secondary Drive



Item	Part No.	Description
1	94419	Motor – 3 Hp (3 Phase)
-	94414	Motor – 3 Hp (1 Phase)
2	94588	Gearbox Primary
3	431335	Brace – Primary Gearbox (Rear Section)
-	431331	Brace – Primary Gearbox (Front Section)
4	452180	Shield Cover – Top (Rear Section)
-	452164	Shield Cover – Top (Front Section)
5	21511	Spring Tensioner
6	450220	Adjusting Rod
7	94001	Idler Sprocket- 5/8" x 6013
8	450145	Idler Spacer
9	450227	Chain - #60 51 Links
10	463228	Brace – Secondary Gearbox

Item	Part No.	Description
11	94589	Gearbox - Secondary
12	82812	Set Collar - Primary
-	82813	Set Collar - Secondary
13	81224	Sprocket – 1-1/2" x 6015 (Primary)
-	94003	Sprocket – 1-3/8" x 6015 (Secondary)
14	452170	Side Shield – Rear Section
-	452163	Side Shield – Front Section
15	452177	Mount – Side Shield
16	94001	Idler Sprocket – 5/8" x 6013
17	450190	Tightener Arm
18	452623	Sprocket – 6013 Broached
19	94429	Motor – 2 Hp (3 Phase)
-	94413	Motor – 2 Hp (1 Phase)

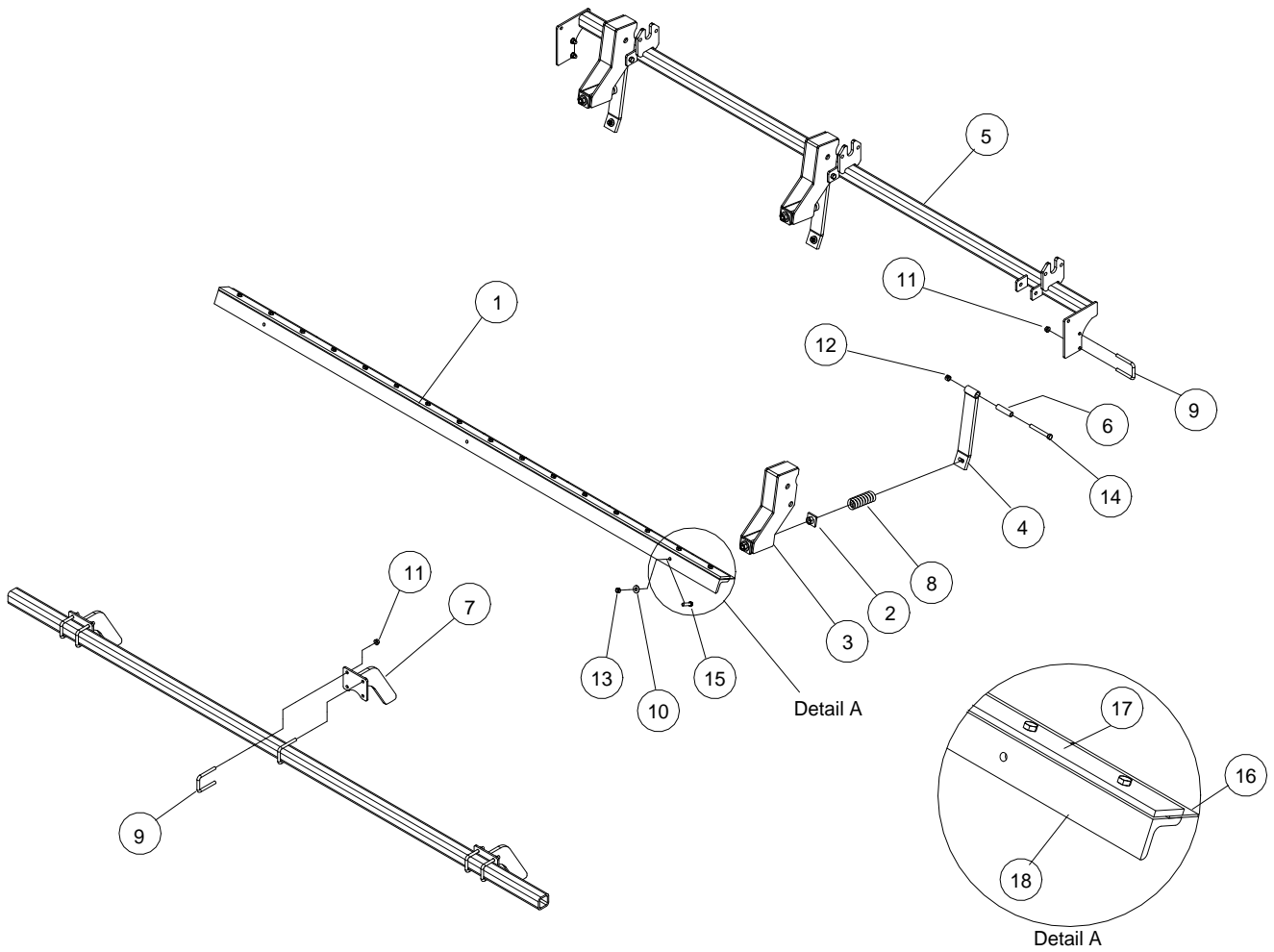
Hydraulic Scraper



Item	Part No.	Description
1	453395	Keeper
2	453390	Scraper Tensioner
3	453360	Pressure Plate
4	453340	Flat Scraper Mount
5	453335	Frame Scraper Mount
6	450233	Bushing
7	430395	Upper Mount
8	430390	Scraper Mount
9	430380	Scraper Assembly
10	95366	Cylinder
11	94020	Hydraulic Hand Jack
12	21506	Spring
13	21024	U-Bolt, 3/8" x 2 x 3
14	20913	Bridge Pin, #4

Item	Part No.	Description
15	20513	Washer, 3/8
16	20471	Flange Nut, 3/8"
17	20428	Centerlock Nut, 3/4"
18	20424	Centerlock Nut, 7/16"
19	20423	Centerlock Nut, 3/8"
20	20421	Centerlock Nut, 1/4"
21	20169	Bolt, 3/4 x 1-3/4"
22	20045	Bolt, 7/16 x 3-1/2
23	20030	Bolt, 3/8 x 1-1/2
24	20005	Bolt, 1/4 x 2
25	430381	Scraper Angle
26	460463	Scraper Blade
27	460462	Scraper Clamp

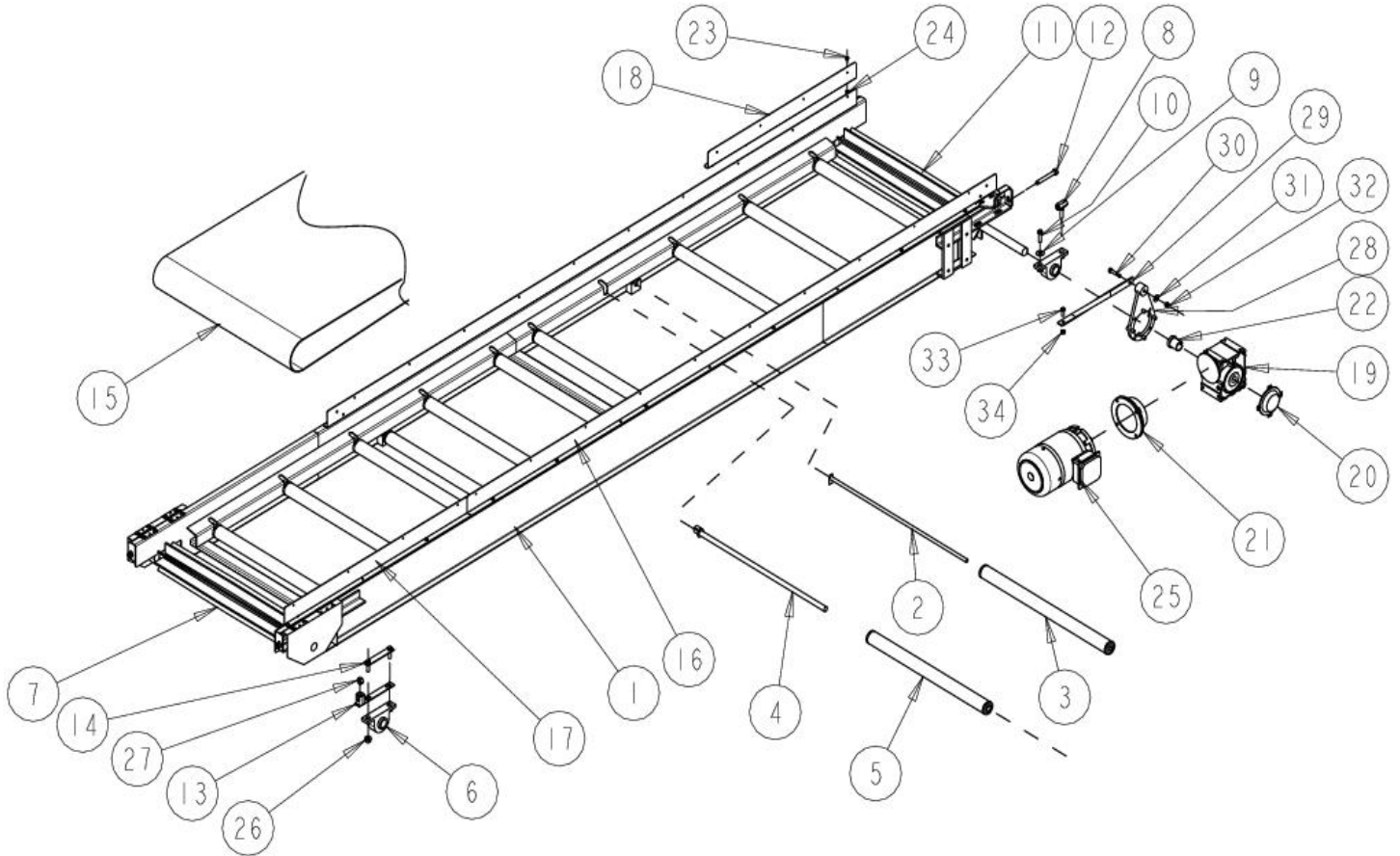
Manual Scraper



Item	Part No.	Description
1	460460	Scraper Assembly
2	453395	Keeper
3	453390	Scraper Tensioner
4	453340	Flat Scraper Mount
5	453335	Frame Scraper Mount
6	450233	Bushing
7	430385	Scraper Stop
8	21506	Spring
9	21024	U-Bolt, 3/8 x 2 x 3

Item	Part No.	Description
10	20513	Washer, 3/8"
11	20471	Flange Nut, 3/8"
12	20424	Centerlock Nut, 7/16"
13	20423	Centerlock Nut, 3/8"
14	20045	Bolt, 7/16 x 3-1/2"
15	20030	Bolt, 3/8 x 1-1/2"
16	460463	Scraper Blade
17	460462	Scraper Clamp
18	460461	Scraper Angle

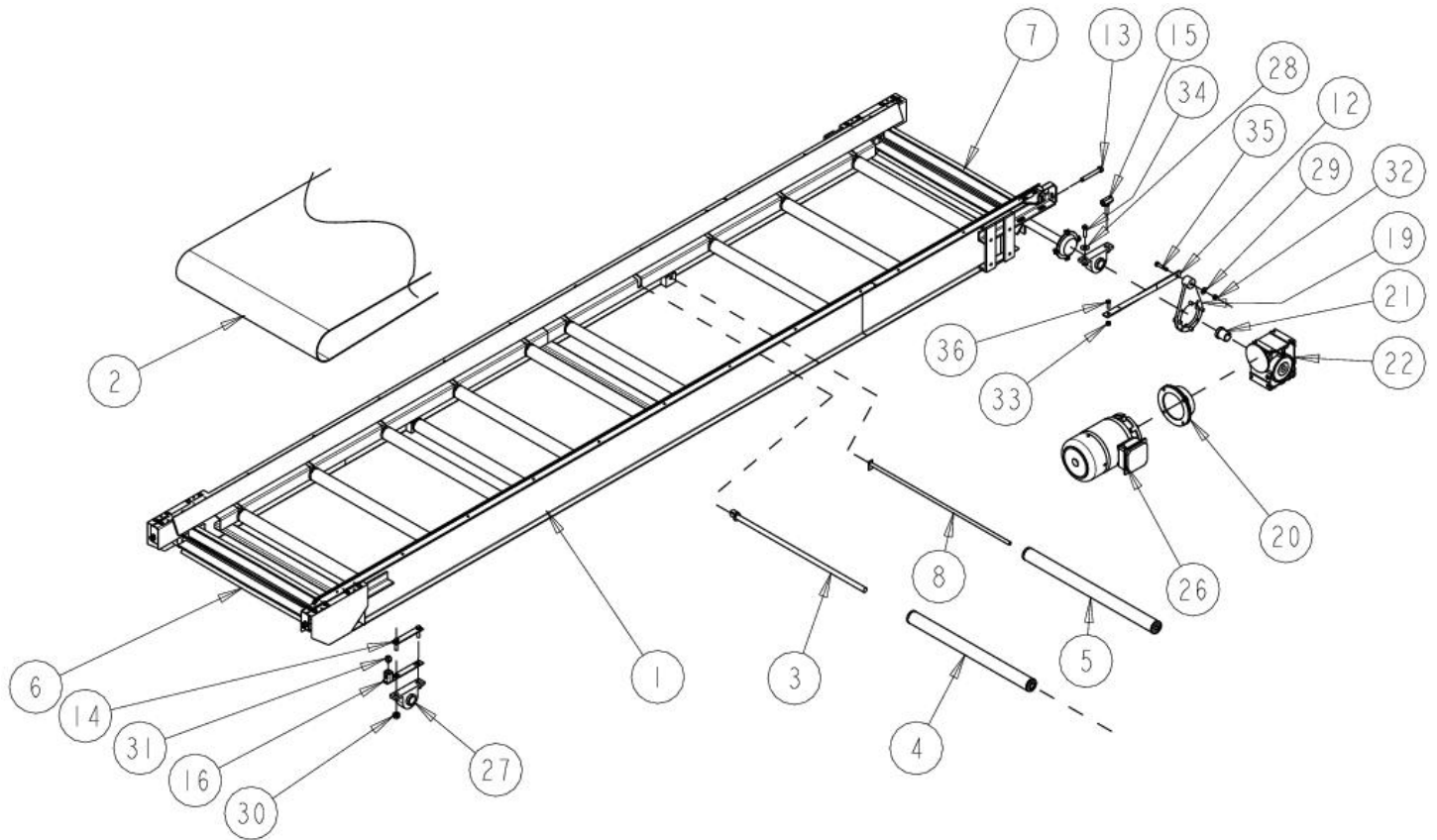
Lower Cross Potato Conveyor (460525)



Item	Part No.	Description
1	460535	Weldment- Lower Cross Conveyor
2	452431	Weldment- Retainer Rod 29.75"
3	452641	27 1/4" Roller Assembly
4	452787	Weldment- Retainer Rod 30"
5	452642	25 1/4" Roller Assembly
6	94040	1-1/4" Pillow Block Assembly
7	452616	Idle Roller- 30"
8	452115	Weldment- Bearing Tightener Bolt
9	20514	Washer, 7/16" Flat
10	20041	Bolt, 7/16 x 1-1/2" Hex HD
11	452600	30" Drive Roller
12	452200	1/2" x 4" Threaded Bolt
13	452113	Weldment- Bearing Tightener
14	452145	Weldment- Bolt Lock- 4-3/4"
15	460527	Belt- 30 x 312-1/2"
16	452586	Extension -Conveyor Side
17	460526	Shield- Lower Cross Splash
18	452593	Side Panel 32-1/2"

Item	Part No.	Description
19	94603	Gearbox- 15:1
20	94609	Cover- Gearbox
21	94607	Coupler- Gearbox to Motor
22	94606	Coupler- Reducer
23	20000	Bolt, 1/4 x 1 Gr. 5
24	20475	Nut, 1/4 Serrated Flange
25	94417	Motor, 1.5 HP 3 Phase
-	94412	Motor, 1.5 HP Single Phase
26	20481	Nut- 7/16 Flange NC
27	20473	Nut, 1/2 Heavy Hex
28	94608	Arm- Motor Torque
29	452255	Gearhead Support- Twisted
30	20031	Bolt, 3/8 x 2" NC Gr. 5
31	20513	Washer, 3/8" Flat
32	20423	Nut, 3/8 Centerlock
33	20029	Bolt, 3/8 x 1" Hex HD
34	20402	Nut, 3/8 Hex

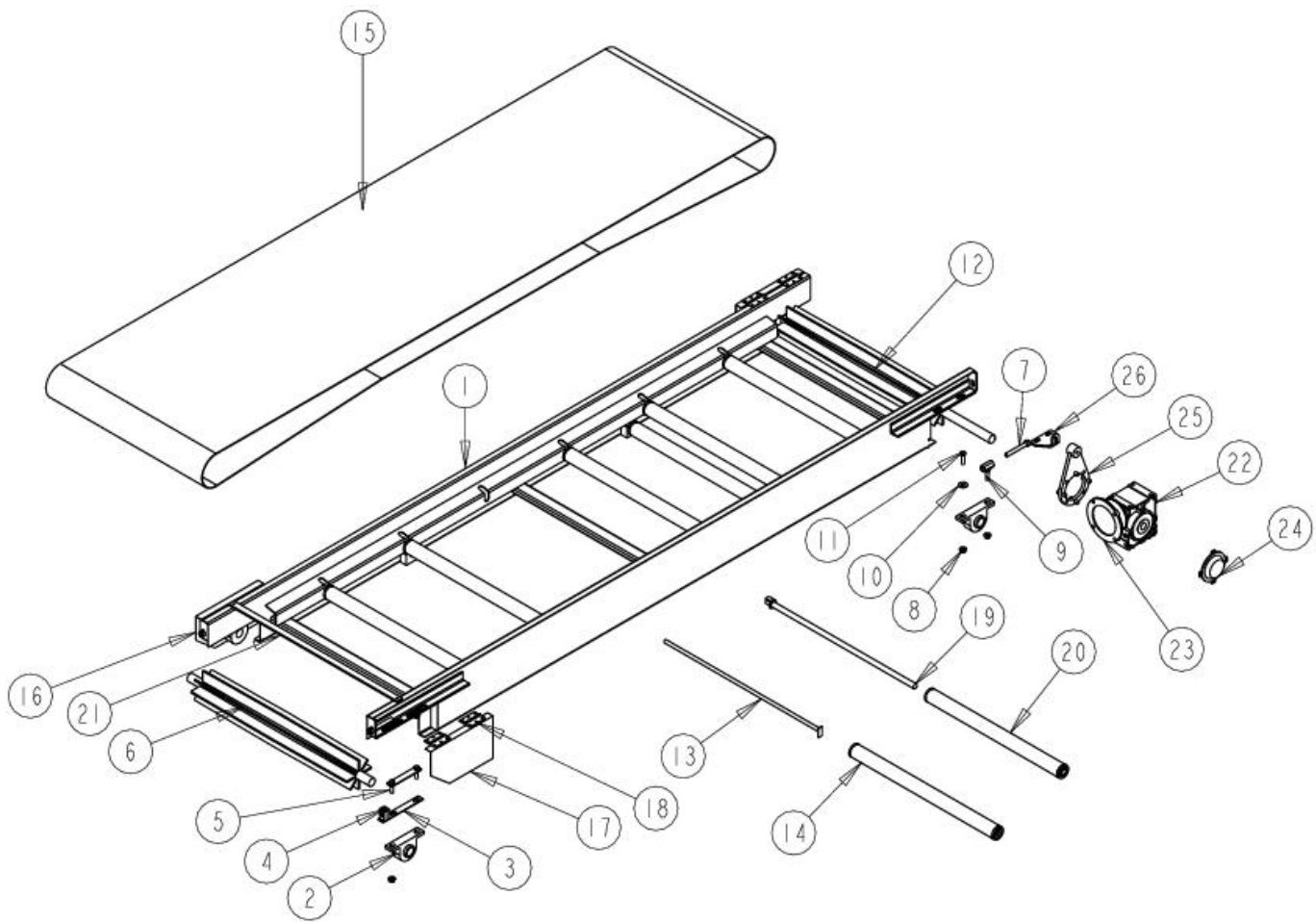
Center Cross Dirt Conveyor (460528)



Item	Part No.	Description
1	460535	Weldment- Center Dirt Conveyor
2	460527	Belt- 30 x 312-1/2"
3	452787	Weldment- Retainer Rod 30"
4	452642	25 1/4" Roller Assembly
5	452641	27 1/4" Roller Assembly
6	452616	Idle Roller- 30"
7	452600	30" Drive Roller
8	452431	Weldment- Retainer Rod 29.75"
9	452370	Shield – Dirt Conveyor – Long
10	452377	Shield – Dirt Conveyor – Short
11	452264	Gearhead Support- Nord
12	452255	Gearhead Support- Twisted
13	452200	1/2" x 4" Threaded Bolt
14	452145	Weldment- Bolt Lock- 4-3/4"
15	452115	Weldment- Bearing Tightener Bolt
16	452113	Weldment- Bearing Tightener
17	94568	Conveyor Shield
18	94567	3x2 Hinge 5t990
19	94608	Arm- Motor Torque

Item	Part No.	Description
20	94607	Coupler- Gearbox to Motor
21	94606	Coupler- Reducer
22	94603	Gearbox- 15:1
23	94609	Cover- Gearbox
24	95089	Pop Rivet
25	20000	Bolt, 1/4 x 1 Gr. 5
26	94417	Motor - 1.5 HP 3 Phase
-	94412	Motor - 1.5 HP Single Phase
27	94040	1-1/4" Pillow Block Assembly
28	20514	Washer, 7/16" Flat
29	20513	Washer, 3/8" Flat
30	20481	Nut- 7/16 Flange NC
31	20473	Nut, 1/2 Heavy Hex
32	20423	Nut, 3/8 Centerlock
33	20402	Nut, 3/8 Hex
34	20041	Bolt, 7/16 x 1-1/2" Hex HD
35	20031	Bolt, 3/8 x 2" NC Gr. 5
36	20029	Bolt, 3/8 x 1" Hex HD

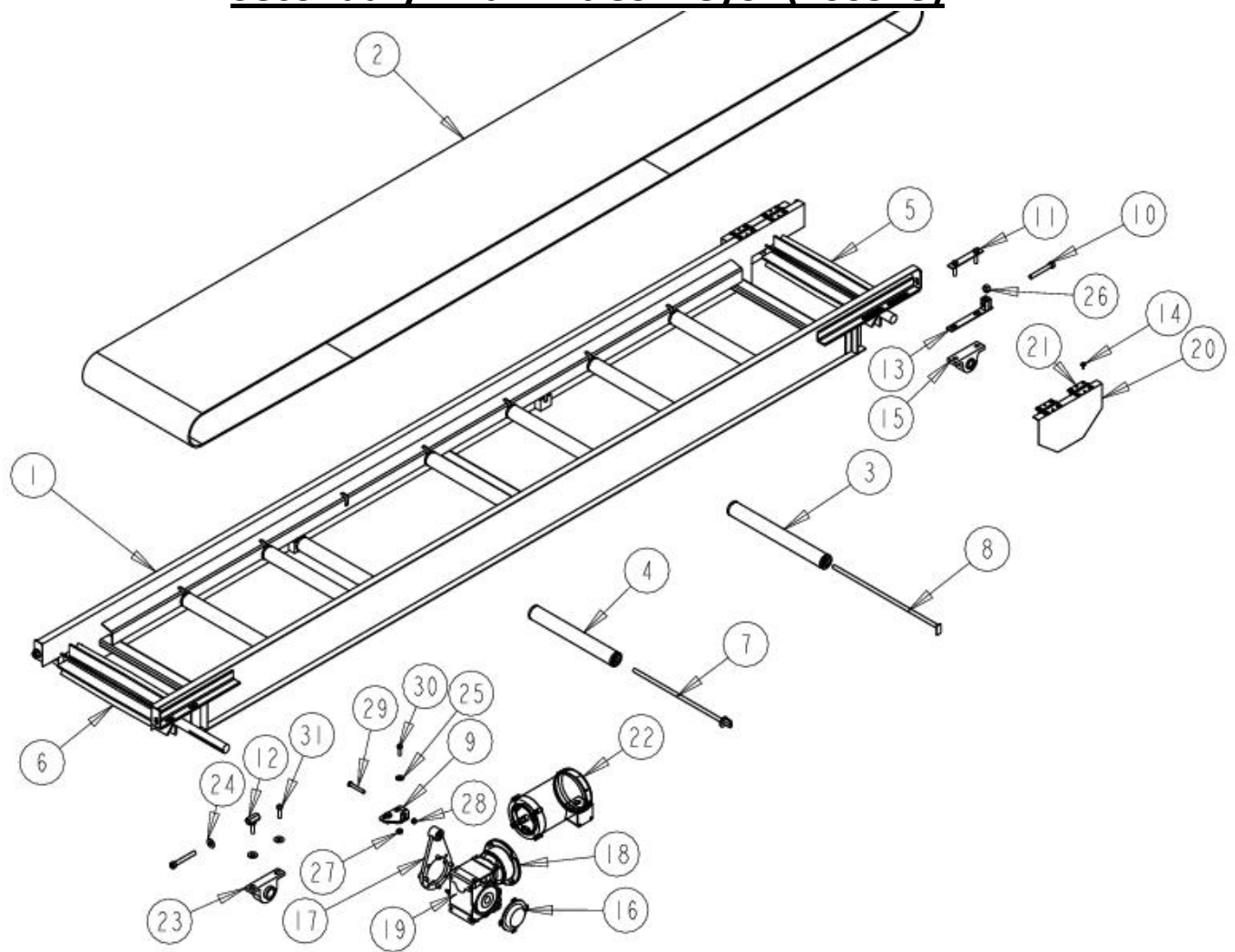
Top Cross Potato Conveyor (460500)



Item	Part No.	Description
1	460510	Weldment- Top Cross Conveyor
2	94040	1-1/4" Pillow Block Assembly
3	452113	Weldment- Bearing Tightener
4	20473	Nut, 1/2 Heavy Hex
5	452145	Weldment- Bolt Lock 4- 3/4"
6	452616	Idler Roller- 30"
7	452200	1/2" x 4" Threaded Rod
8	20481	Nut, 7/16 Serrated Flange
9	452115	Weldment- Bearing Tightener Bolt
10	20514	Washer, 7/16 Flat
11	20041	Bolt, 7/16 x 1- 1/2" Hex HD
12	452600	Roller- Drive- 30"
13	452431	Weldment- Retainer Rod 29.75"
14	452641	Assembly- 27 1/4" Roller

Item	Part No.	Description
15	460501	Belt- 30 x 225"
16	452960	Shield- Conveyor- Right
17	452965	Shield- Conveyor- Left
18	94567	3x2 Hinge 5t990
19	452787	Weldment-Retainer Rod 30"
20	452642	Assembly- 25 1/4" Roller
21	452225	Support- Top Cross Flap
22	94603	Gearbox- 15:1
23	94607	Coupler- Gearbox to Motor
24	94609	Cover- Gearbox
25	94608	Arm- Motor Torque
26	452264	Gearhead Support- Nord
NS	94417	Motor – 3 Phase
-	94412	Motor – Single Phase

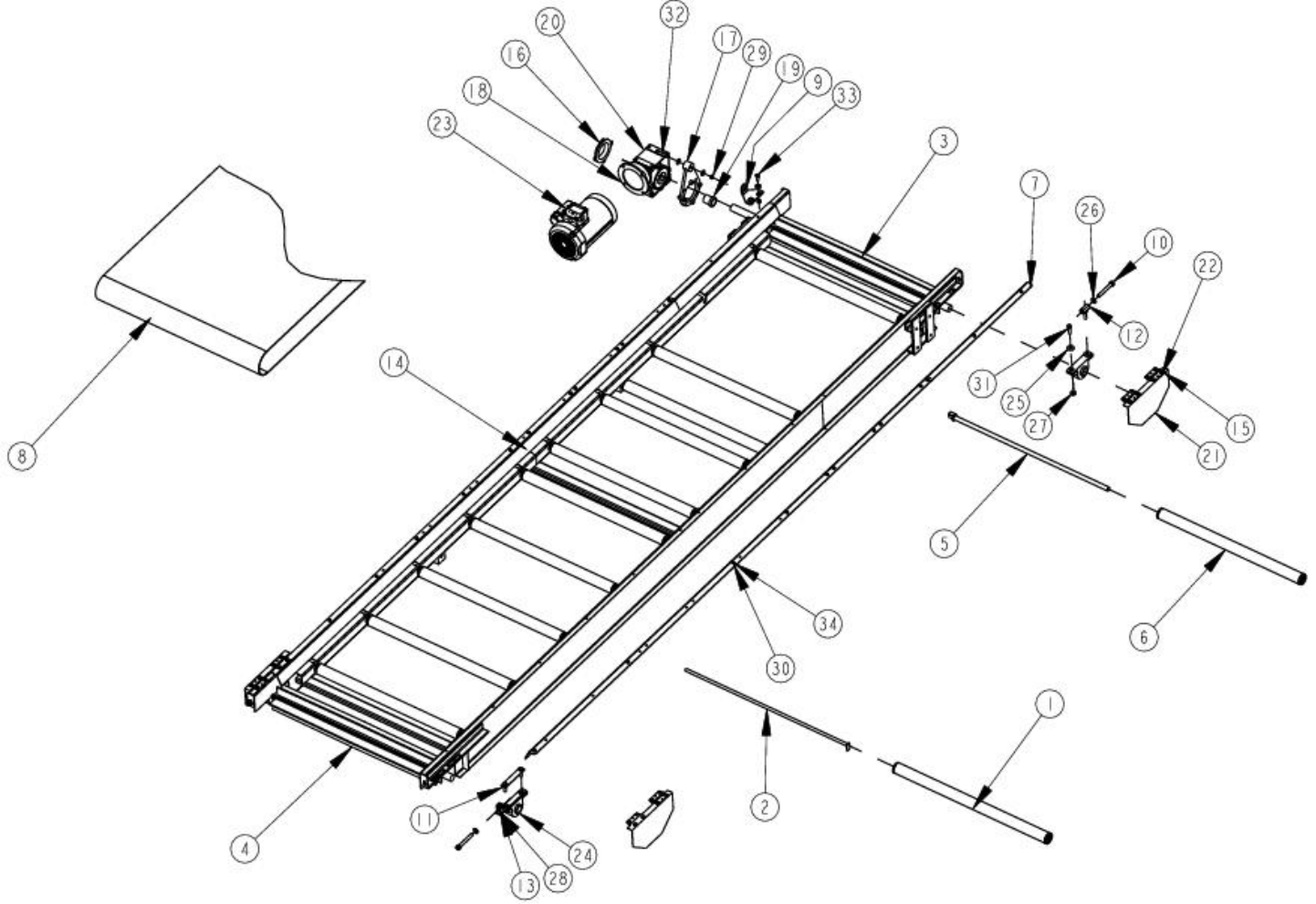
Secondary Final Dirt Conveyor (460545)



Item	Part No.	Description
1	460555	Weldment- Lower Dirt Conveyor
2	460546	Belt- 20 x 280- 1/2"
3	452639	Assembly- 17.25" Roller
4	452638	Assembly- 15 1/4" Roller
5	452625	Weldment- 20" Idler Roller
6	452610	Roller- 20" Drive
7	452443	Weldment- 18- 1/4" Retainer Rod
8	452441	Weldment- 18" Retainer Rod
9	452264	Gearhead Support- Nord
10	452200	1/2" x 4" Threaded Rod
11	452150	Weldment- Bolt Lock
12	452115	Weldment- Bearing Tightener Bolt
13	452113	Weldment- Bearing Tightener
14	95089	Pop Rivet
15	95018	Bearing- 1" Pillow Block
16	94609	Cover- Gearbox

Item	Part No.	Description
17	94608	Arm- Motor Torque
18	94607	Coupler- Motor to Gearbox
19	94603	Gearbox- 15:1
20	94568	Conveyor Shield
21	94567	3x2 Hinge 5t990
22	94416	Motor- 1 HP 3 Phase 5/8 Shaft
-	94411	Motor- 1 HP Single Phase 5/8 Shaft
23	94040	1-1/4" Pillow Block Assembly
24	20514	Washer, 7/16 Flat
25	20513	Washer, 3/8 Flat
26	20473	Nut, 1/2 Heavy Hex
27	20471	Nut, 3/8 Serrated Flange
28	20423	Nut, 3/8 Centerlock
29	20134	Bolt, 3/8 x 2- 1/2 Hex HD
30	20120	Bolt, 3/8 x 1- 1/4 NC Gr. 5
31	20041	Bolt, 7/16 x 1- 1/2" Hex HD

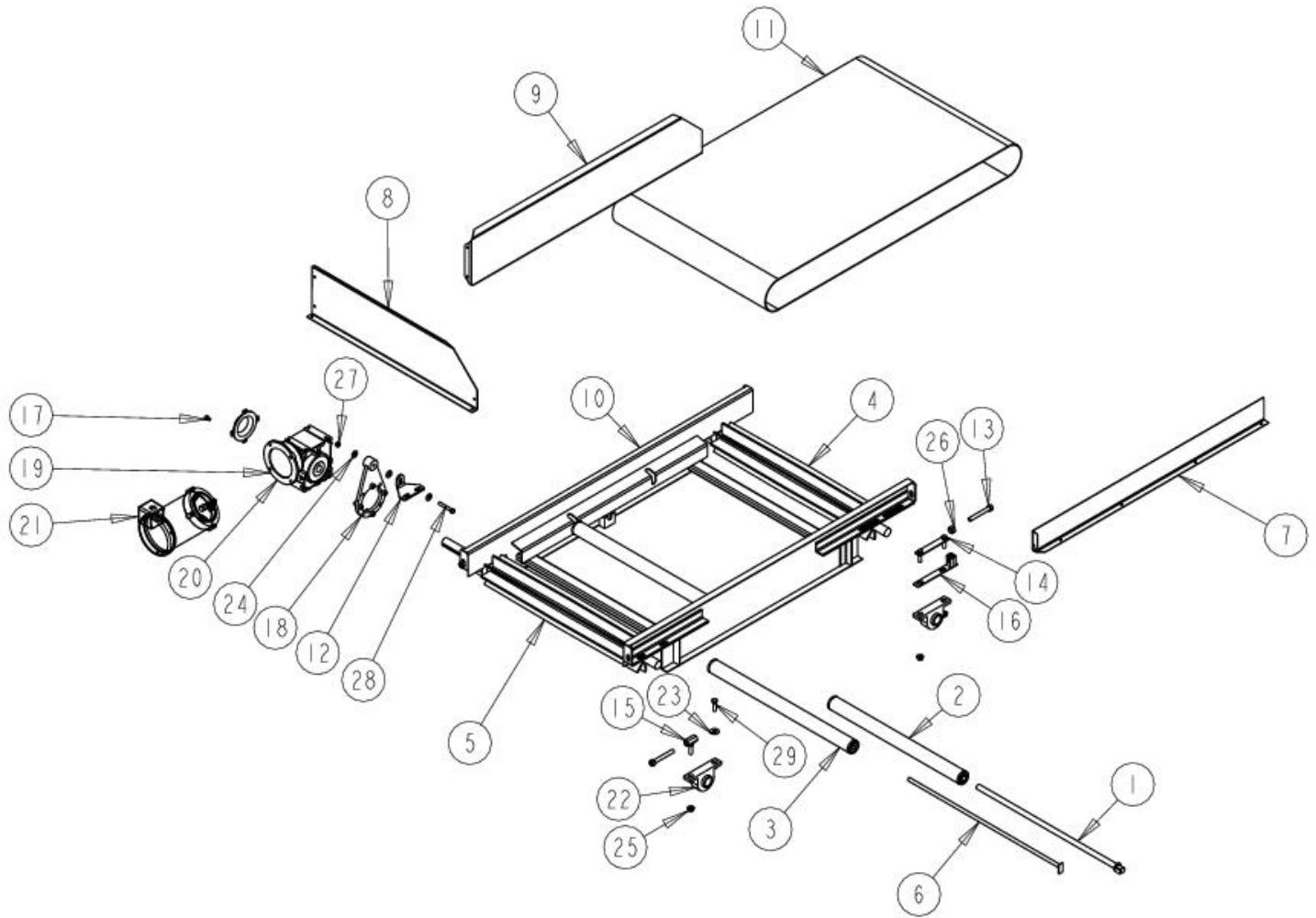
Final Cross Dirt Conveyor (431230)



Item	Part No.	Description
1	459380	Assembly- 33 1/4" Roller
2	459375	Weldment- 35 3/4" Retainer Rod
3	459360	36" Drive Roller
4	459355	Roller- 36" Idler
5	452772	Weldment- Retainer Rod- 36"
6	452770	Assembly- 2" Elevator Roller- 36"
7	452458	Shield- Dirt Conveyor Bolt- On
8	452290	Belt- 30" x 312-1/2"
9	452264	Gearhead Support- Nord
10	452200	1/2" x 4" Threaded Rod
11	452145	Weldment- Bolt Lock 4-3/4"
12	452115	Weldment- Bearing Tightener Bolt
13	452113	Weldment- Bearing Tightener
14	431205	Weldment- Front Cross Dirt
15	95089	Pop Rivet
16	94609	Cover- Gearbox
17	94608	Arm- Motor Torque
18	94607	Coupler- Gearbox to Motor

Item	Part No.	Description
19	94606	Coupler- Reducer
20	94605	Gearbox- 15:1
21	94568	Conveyor Shield
22	94567	3x2 Hinge 5t990
23	94417	Motor- 1.5 HP – 3 Phase
-	94412	Motor- 1.5 HP – Single Phase
24	94040	Assembly- 1-1/4" Pillow Block
25	20514	Washer, 7/16 Flat
26	20513	Washer, 3/8 Flat
27	20481	Nut, 7/16 Serrated Flange
28	20473	Nut, 1/2 Heavy Hex
29	20423	Nut, 3/8 Centerlock
30	20421	Nut, 1/4 Centerlock
31	20041	Bolt, 7/16 x 1-1/2" Hex HD
32	20031	Bolt, 3/8 x 2" NC Gr. 5
33	20029	Bolt, 3/8 x 1 Hex HD
34	20000	Bolt, 1/4 x 1/2" Gr.5 NC ZP

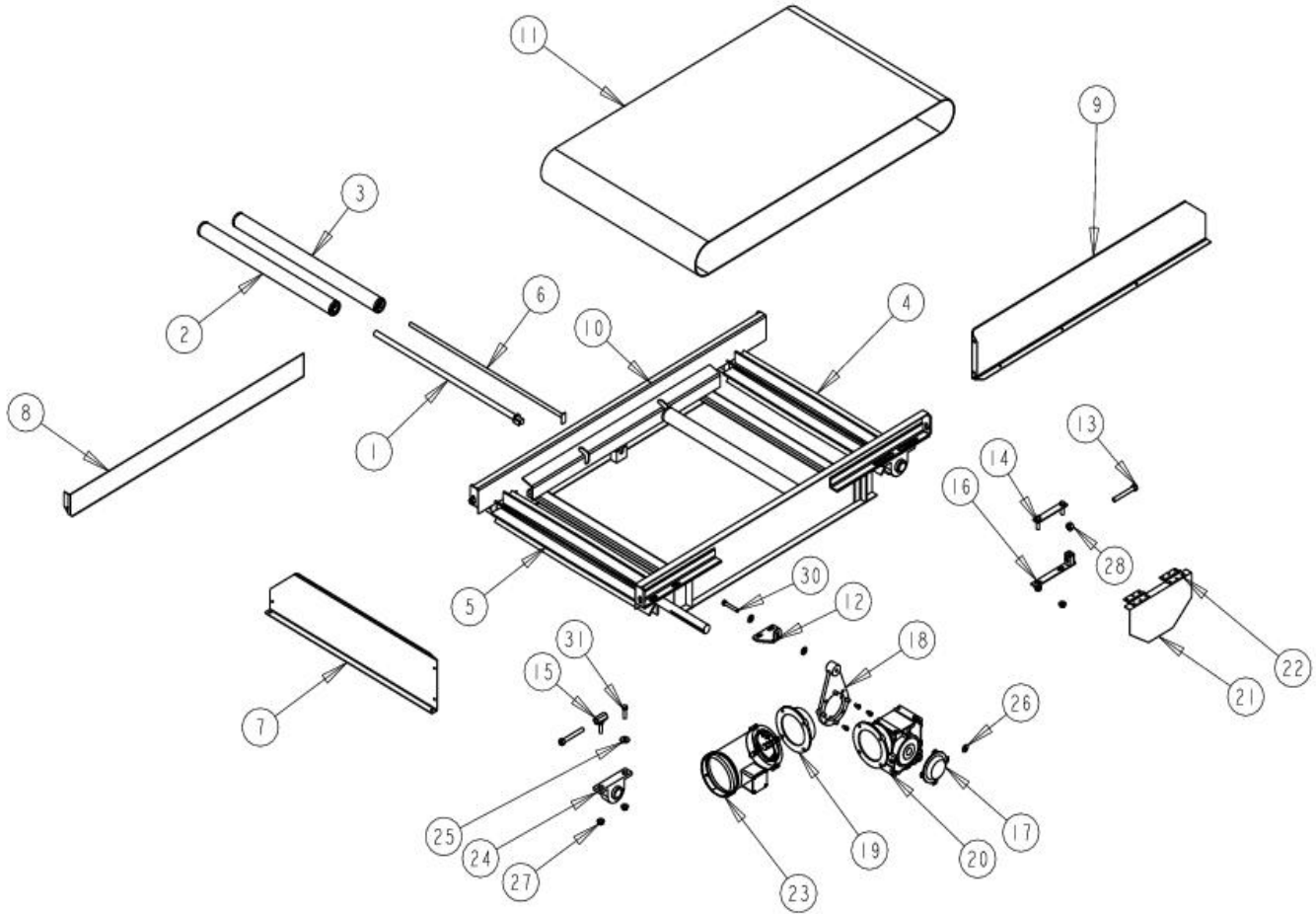
Front Side Clean Potato Conveyor (455605)



Item	Part No.	Description
1	452787	Weldment- 30" Retainer Rod
2	452642	Assembly- 25 1/4" Roller
3	452641	Assembly- 27 1/4" Roller
4	452616	Roller- 30" Idler
5	452600	Roller- 30" Drive
6	452431	Weldment- 29.75" Retainer Rod
7	452359	Shield- Inside Reverse
8	452358	Shield- Outside Reverse
9	452357	Shield- Back Reverse
10	452350	Weldment- Side Conveyor
11	452321	Belt- 30 X 102-1/2
12	452264	Gearhead Support- Nord
13	452200	1/2" x 4" Threaded Rod
14	452145	Weldment- Bolt Lock 4-3/4"
15	452115	Weldment- Bearing Tightener Bolt

Item	Part No.	Description
16	452113	Weldment- Bearing Tightener
17	94609	Cover- Gearbox
18	94608	Arm- Motor Torque
19	94607	Coupler- Gearbox to Motor
20	94603	Gearbox- 15:1
21	94416	Motor- 1 HP 3 Phase
-	94411	Motor- 1 HP Single Phase
22	94040	Assembly- 1-1/4" Pillow Block
23	20514	Washer, 7/16 Flat
24	20513	Washer, 3/8 Flat
25	20481	Nut, 7/16 Serrated Flange
26	20473	Nut, 1/2 Heavy Hex
27	20423	Nut, 3/8 Centerlock
28	20134	Bolt, 3/8 x 2-1/2 Hex HD
29	20041	Bolt, 7/16 x 1-1/2" Hex HD

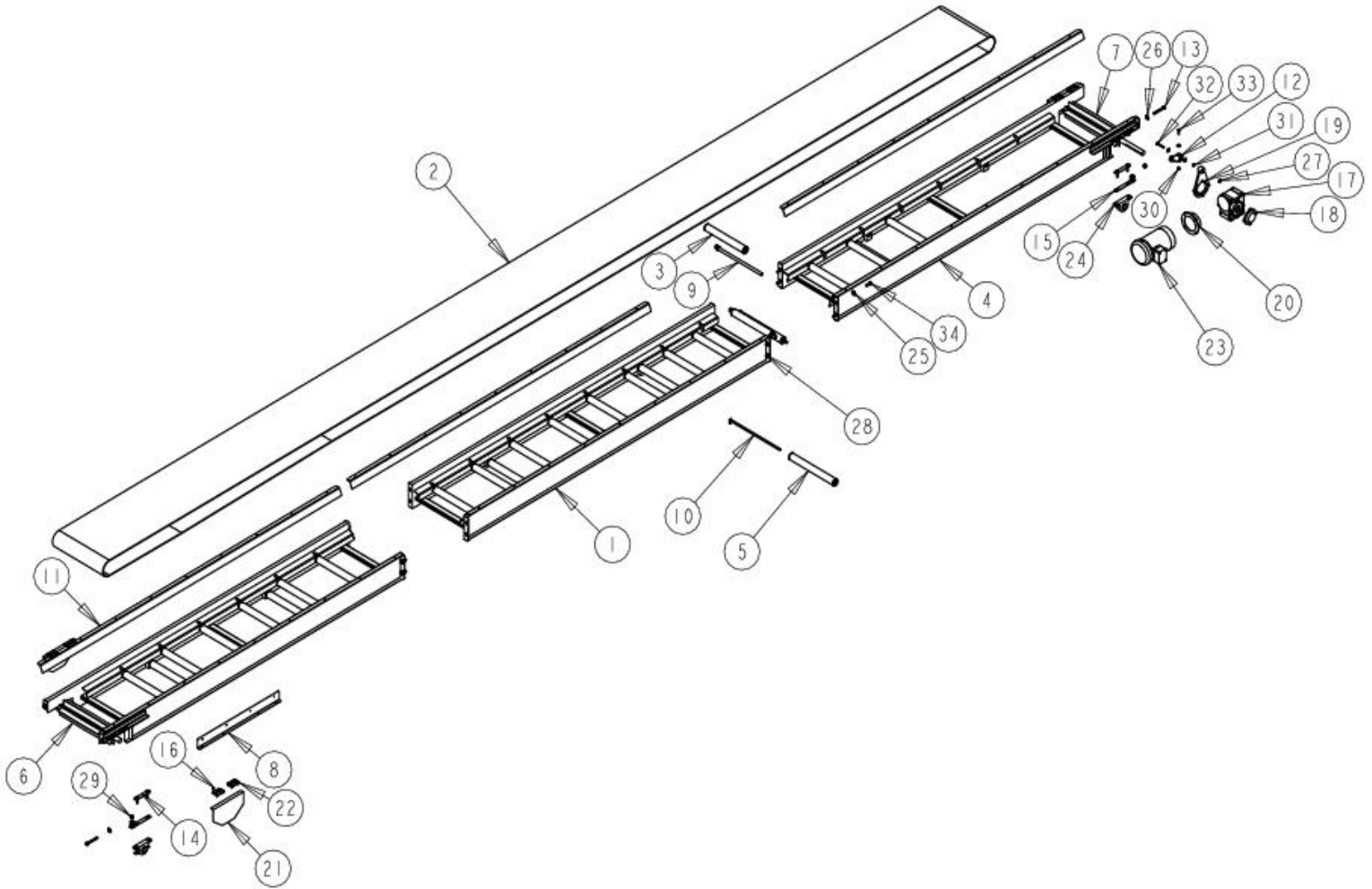
Rear Side Clean Potato Conveyor (452320)



Item	Part No.	Description
1	452787	Weldment- 30" Retainer Rod
2	452642	Assembly- 25 1/4" Roller
3	452641	Assembly- 27 1/4" Roller
4	452616	Roller- Idle 30"
5	452600	Roller- 30" Drive
6	452431	Weldment- 29.75 Retainer Rod
7	452364	Splash Shield- Side Conveyor- Back
8	452361	Splash Shield- Side Conveyor- Inside
9	452360	Splash Shield- Side Conveyor- Outside
10	452350	Weldment- Side Conveyor
11	452321	Belt- 30 X 102-1/2
12	452264	Gearhead Support- Nord
13	452200	1/2" x 4" Threaded Rod
14	452145	Weldment- 4-3/4" Bolt Lock
15	452115	Weldment- Bearing Tightener Bolt
16	452113	Weldment- Bearing Tightener

Item	Part No.	Description
17	94609	Cover- Gearbox
18	94608	Arm- Motor Torque
19	94607	Coupler- Gearbox to Motor
20	94603	Gearbox- 15:1
21	94568	Conveyor Shield
22	94567	3x2 Hinge 5t990
23	94416	Motor- 1 HP 3 Phase
-	94411	Motor- 1 HP Single Phase
24	94040	Assembly- 1-1/4" Pillow Block
25	20514	Washer, 7/16 Flat
26	20513	Washer, 3/8 Flat
27	20481	Nut, 7/16 Serrated Flange
28	20473	Nut, 1/2 Heavy Hex
29	20423	Nut, 3/8 Centerlock
30	20134	Bolt, 3/8 x 2 -1/2 Hex HD
31	20041	Bolt, 7/16 x 1 -1/2" Hex HD

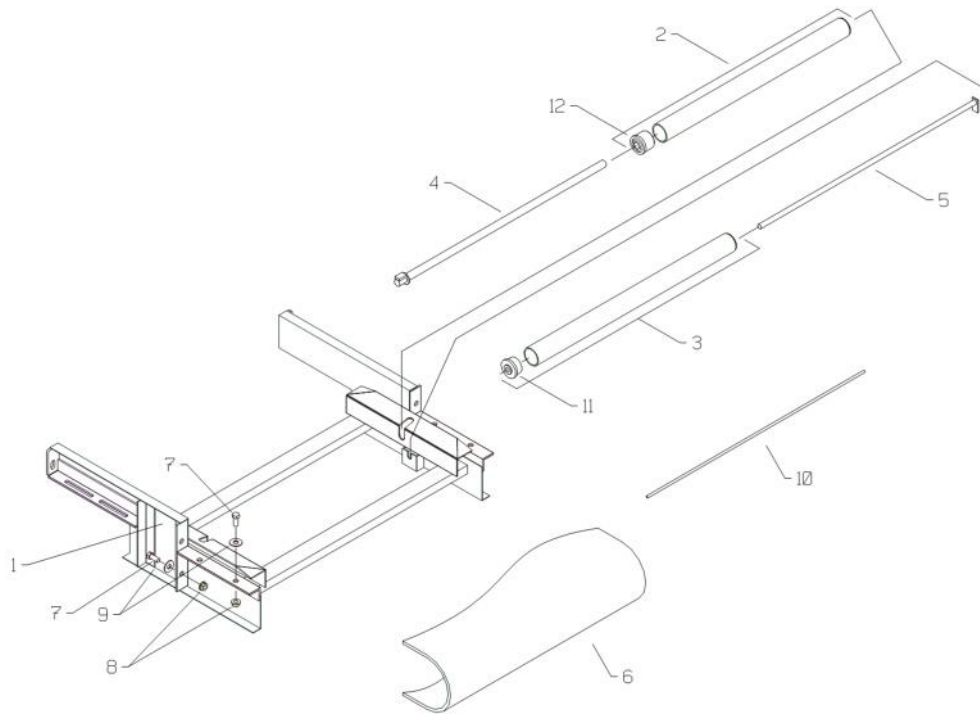
Side Dirt Conveyor (455596)



Item	Part No.	Description
1	455685	Weldment- Side Dirt Conveyor
2	455598	Belt- Side Dirt- 20" x 712"
3	455597	Assembly- 15 1/4" Roller
4	455591	Weldment- Side Dirt Conveyor End
5	452639	Assembly- 17.25" Roller
6	452625	Weldment- 20" Idler Roller
7	452610	Roller- 20" Drive
8	452593	Side Panel- 32- 1/2"
9	452454	Weldment- Retainer Rod- 20"
10	452441	Weldment- Retainer Rod
11	452370	Shield- Dirt Conveyor Bolt-on
12	452264	Gearhead Support- Nord
13	452200	1/2" x 4" Threaded Rod
14	452150	Weldment- Bolt Lock
15	452113	Weldment- Bearing Tightener
16	95089	Pop Rivet
17	94626	Gearbox- 20:1
18	94609	Cover- Gearbox

Item	Part No.	Description
19	94608	Arm- Motor Torque
20	94607	Coupler- Gearbox to Motor
21	94568	Conveyor Shield
22	94567	3x2 Hinge 5t990
23	94418	Motor- Electric 2 HP 3 Phase
-	94413	Motor- Electric 2 HP Single Phase
24	94040	Assembly- 1-1/4" Pillow Block
25	20515	Washer, 1/2 Flat
26	20514	Washer, 7/16 Flat
27	20513	Washer, 3/8 Flat
28	20505	Nut, 1/2 Serrated Flange
29	20473	Nut, 1/2 Heavy Hex
30	20471	Nut, 3/8 Serrated Flange
31	20423	Nut, 3/8 Centerlock
32	20134	Bolt, 3/8 x 2 -1/2 Hex HD
33	20120	Bolt, 3/8 x 1 -1/4 NC Gr. 5
34	20052	Bolt, 1/2 x 1 -1/2" NC Gr. 5 ZP

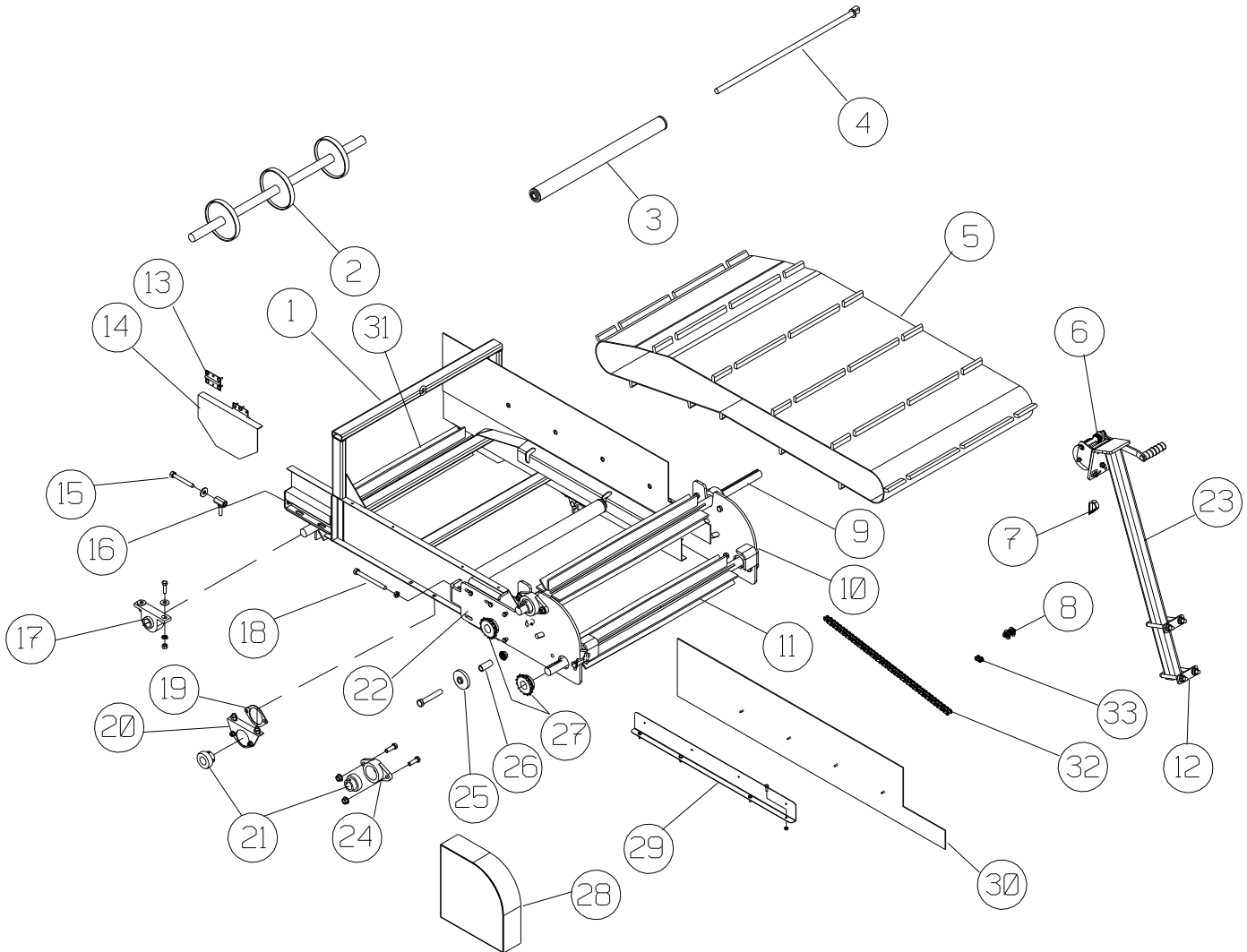
30" x 18" Conveyor Extension (456062)



Item	Part No.	Description
1	452490	30 x 18 Conveyor Extension
2	452642	Roller Assembly
3	452641	Carryback Roller Assembly
4	452787	Retainer Rod
5	452431	Carryback Retainer Rod
6	456073	30"W x 36"L Laced Belt

Item	Part No.	Description
7	20043	Bolt, 7/16" x 1"
8	20481	Flange Nut, 7/16"
9	20514	Washer, 7/16"
10	-	Belt Splice Pin
11	94012	Roller End, 1/2 x 2"
12	94019	Roller End, 3/4 x 2"

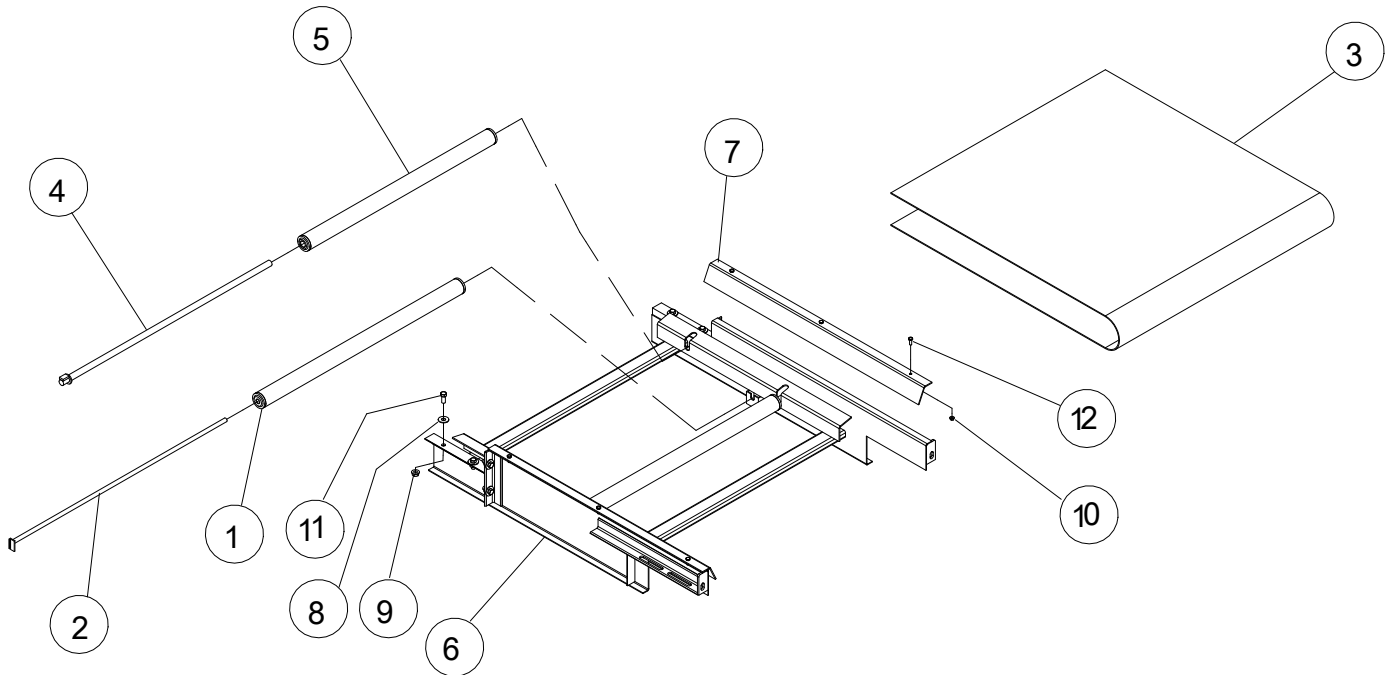
Folding Conveyor Extension (451350)



Item	Part No.	Description
1	451439	Folding Conveyor Frame
2	457400	Carryback Roller, 30" Conv.
3	452642	Conveyor Roller, 30" Conv.
4	452787	Retainer Rod, 30" Conv.
5	451358	Belt, 30" x 114"
6	94575	Winch
7	21309	Thimble - 3/16"
8	21301	Clamp - 3/16" Cable
9	451458	Drive Roller, Dual
10	451439	Conveyor Mount, RH
11	451450	Drive Roller
12	431633	Strap Winch Mount
13	94567	Hinge
14	94568	Shield
15	452200	Adjustment Bolt
16	452115	Conveyor Take-Up
17	94040	Bearing, 1-1/4"

Item	Part No.	Description
18	351512	Hinge Adjustment Bolt
19	94030	Bearing Plate, 1-1/4" Stamped
20	94031	Bearing Flange, 1-1/4"
21	82041	Bearing, 1-1/4"
22	451433	Conveyor Mount, LH
23	431498	Winch Mount
24	82203	Bearing, 1-1/4"
25	96022	Idler Sprocket, 5/8" x 5015
26	402207	Idler Spacer
27	81153	Sprocket, 1-1/4" x 5015
28	451445	Shield
29	452593	Splash Shield
30	451466	Rubber- Folding Conveyor
31	452616	Idler Roller
32	96046	Roller Chain #50
33	95030	Connector Link #50

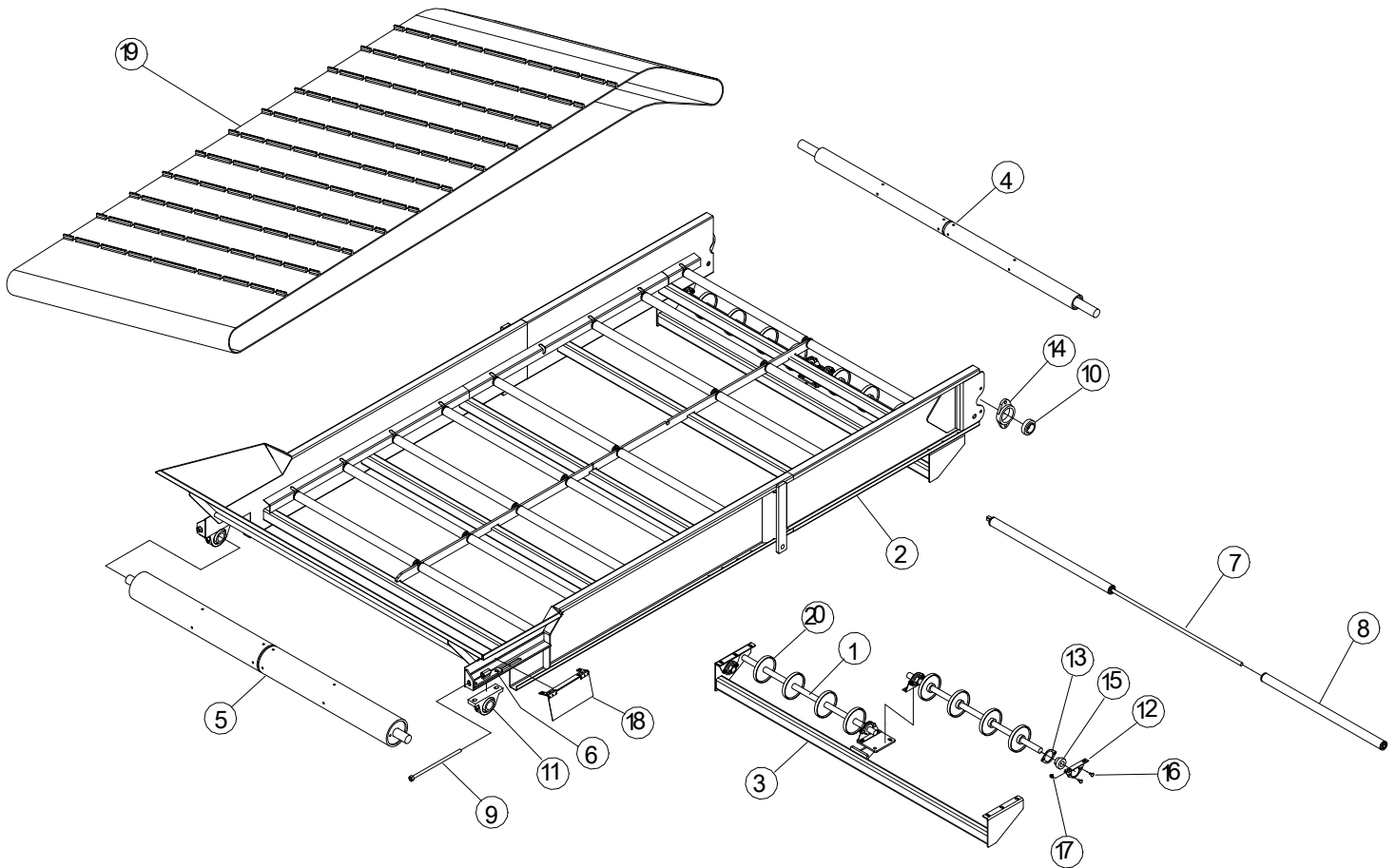
Optional 36" x 36" Conveyor Extension (456069)



Item	Part No.	Description
1	459380	Carryback Roller Assembly
2	459375	Carryback Retainer Rod
3	456077	Belt, 36" x 72"
4	452772	Retainer Rod
5	452770	Roller Assembly
6	452491	Conveyor Extension Weldment

Item	Part No.	Description
7	452459	Side Protector
8	20514	Washer, 7/16"
9	20481	Flange Nut, 7/16"
10	20475	Flange Nut, 1/4"
11	20043	Bolt, 7/16 x 1
12	20001	Bolt, 1/4 x 3/4"

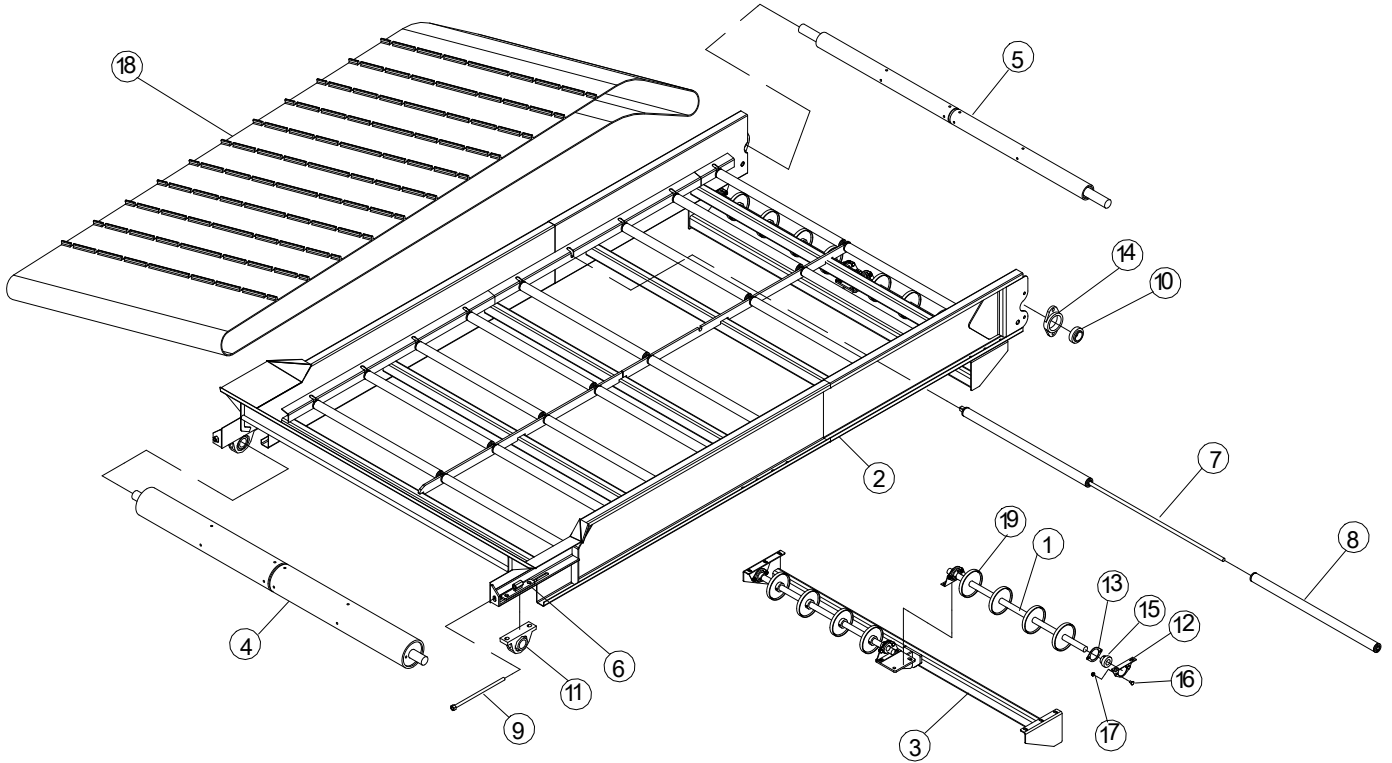
Front Elevator (431960)



Item	Part No.	Description
1	452751	Carryback Shaft
2	431962	Front Elevator
3	431921	Single Belt Carryback
4	431898	Elevator Roller Assembly
5	431899	Belt Idler
6	431820	Belt Tightener
7	431767	Retainer Rod
8	431765	Idler
9	430038	Adjustment Rod
10	95300	Bearing w/ Collar

Item	Part No.	Description
11	94045	Bearing w/ Pillow Block
12	94031	Bearing Flange, 1-1/4"
13	94030	Bearing Flange, 1-1/4" Stamped
14	82207	Bearing Housing
15	82041	Bearing, 1-1/4"
16	20627	Carriage Bolt, 3/8 x 3/4"
17	20471	Flange Nut, 3/8"
18	457085	Shield
19	94205	Belt, Elevator 80" x 376"
20	452754	Carryback Roller

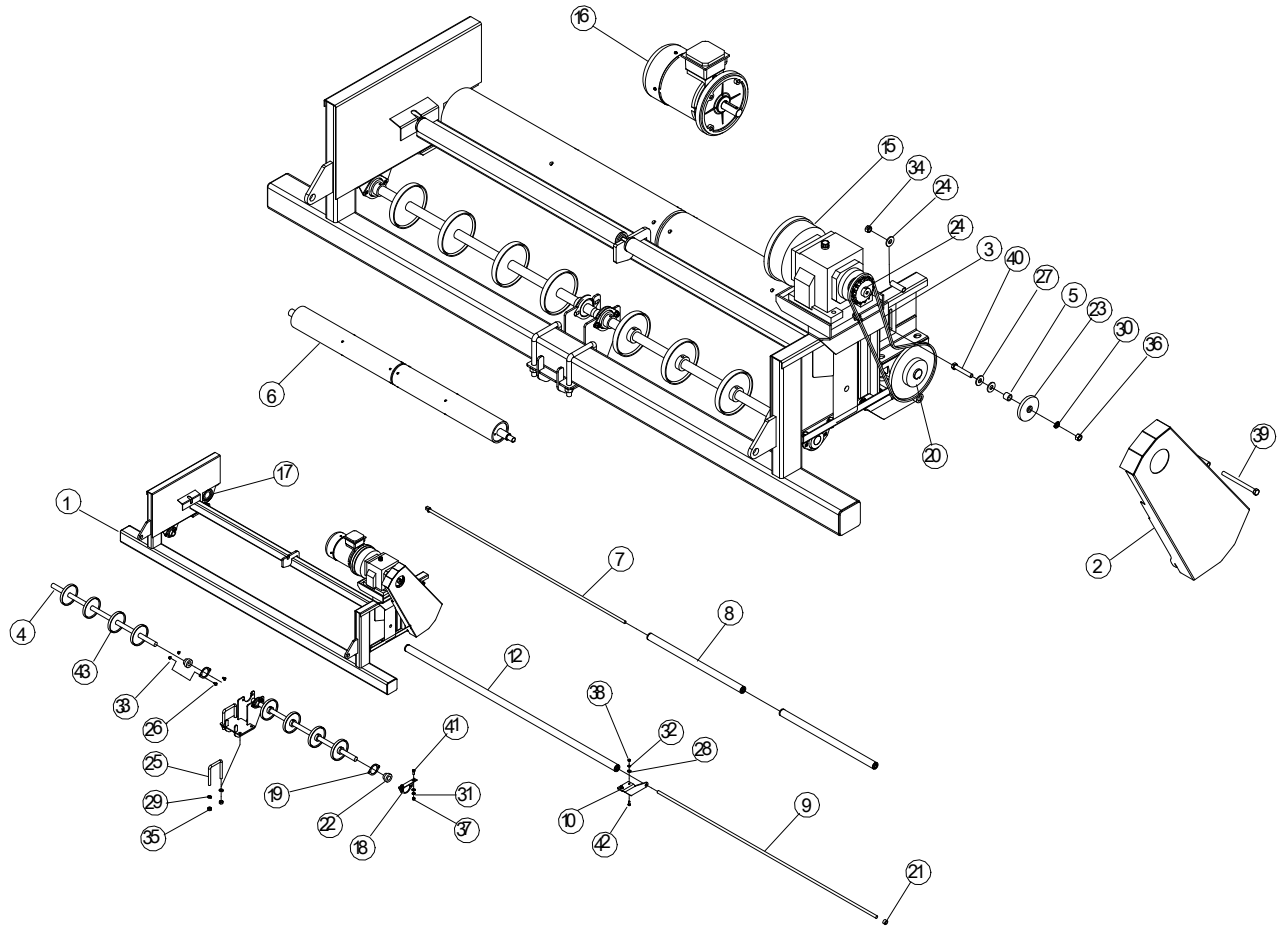
Rear Elevator (431961)



Item	Part No.	Description
1	452751	Carryback Shaft
2	431963	Rear Elevator
3	431921	Single Belt Carryback
4	431899	Elevator Roller Assembly
5	431898	Belt Idler
6	431820	Belt Tightener
7	431767	Retainer Rod
8	431765	Idler
9	430038	Adjustment Rod
10	95300	Bearing w/ Collar

Item	Part No.	Description
11	94045	Bearing w/ Pillow Block
12	94031	Bearing Housing, 1-1/4"
13	94030	Bearing Housing, 1-1/4" Stamped
14	82207	Bearing Housing
15	82041	Bearing, 1-1/4"
16	20627	Carriage Bolt, 3/8 x 3/4"
17	20471	Flange Nut, 3/8"
18	94205	Belt, Elevator 80" x 376"
19	452754	Carryback Roller

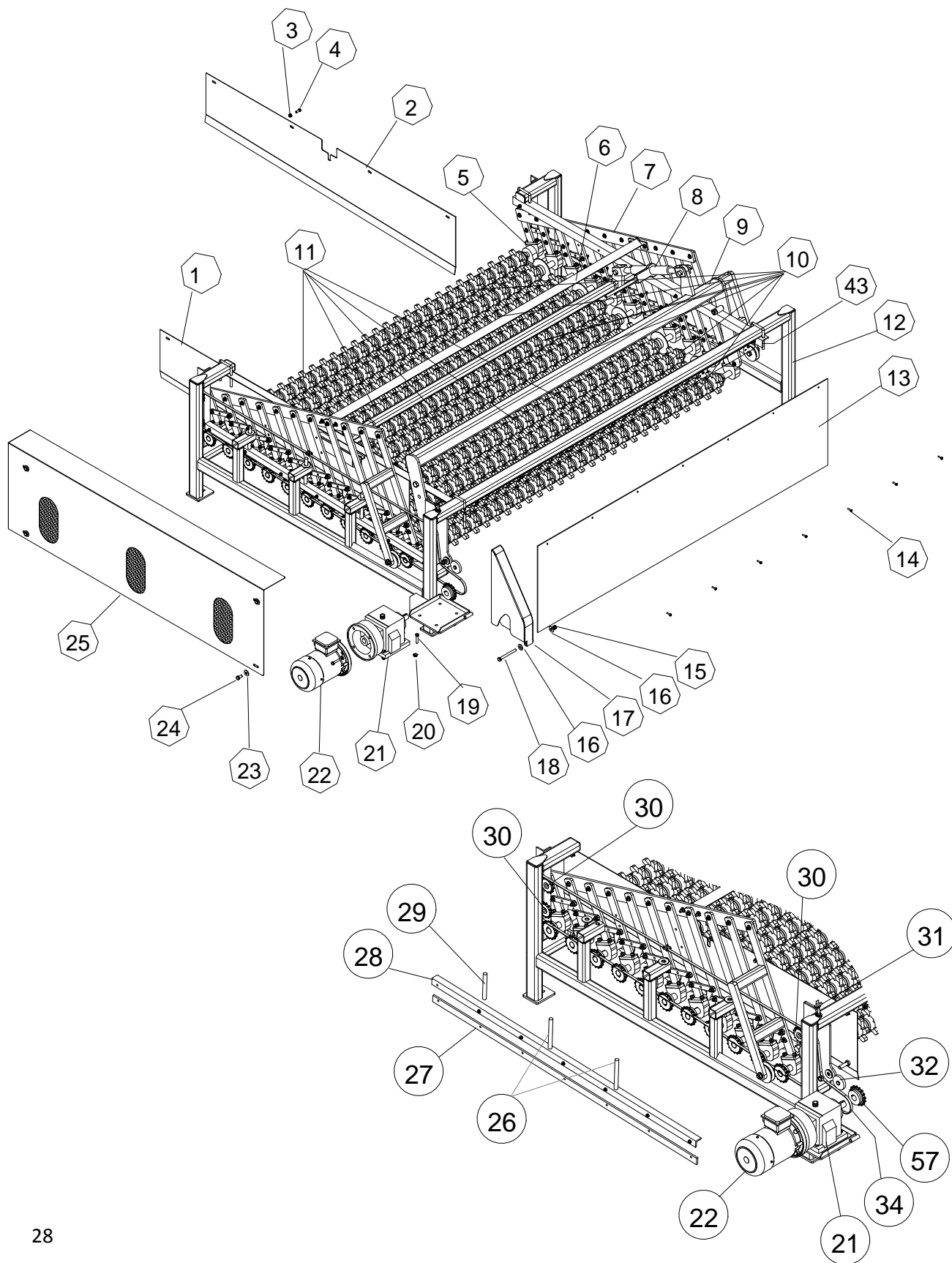
Top Stationary Elevator (431938)

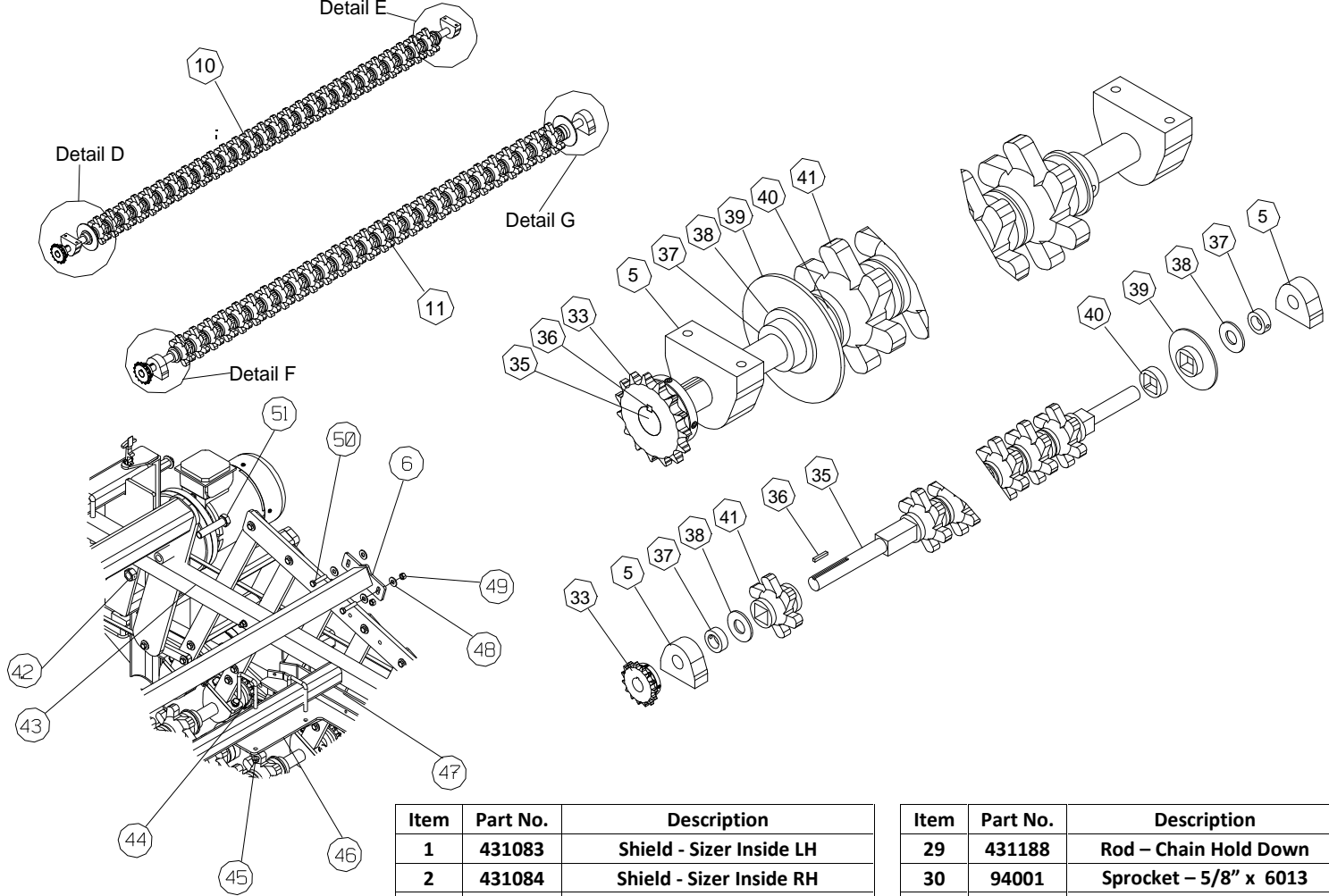


Item	Part No.	Description
1	470600	Top Stationary Elevator
2	457095	Shield, Elevator Drive
3	453075	Chain, Elevator Drive
4	452751	Carryback Shaft
5	450145	Bushing
6	431897	Drive Roller Assembly
7	431767	Retainer Rod
8	431765	Idler Assembly
9	431264	Rod, Rollback
10	431263	Rollback Mount, LH
NS	431262	Rollback Mount, RH
12	431260	Roller Assembly
13	430090	Carryback Roller
14	95049	Connector Link
15	96500	Gearbox
16	94419	Motor - 3 Phase
-	94414	Motor - 1 Phase
17	94045	Bearing w/ Pillow Block
18	94031	Bearing Flange, 1-1/4"
19	94030	Bearing Flange, 1-1/4" Stamped
20	94018	Sprocket, 1-3/8" x 6032
21	82803	Set Collar, 3/4"

Item	Part No.	Description
22	82041	Bearing, 1-1/4"
23	81215	Idler Sprocket, 1/2" x 6013
24	81188	Sprocket, 1-1/4" x 6015
25	21009	U-Bolt, 5/8 x 4 x 5-1/2
26	20627	Carriage Bolt, 3/8 x 3/4"
27	20515	Washer, 1/2"
28	20513	Washer, 3/8"
29	20506	Lock Washer, 5/8"
30	20504	Lock Washer, 1/2"
31	20503	Lock Washer, 7/16"
32	20502	Lock Washer, 3/8"
33	20471	Flange Nut, 3/8"
34	20425	Centerlock Nut, 1/2"
35	20406	Nut, 5/8"
36	20404	Nut, 1/2"
37	20403	Nut, 7/16"
38	20402	Nut, 3/8"
39	20062	Bolt, 1/2 x 6"
40	20056	Bolt, 1/2 x 3"
41	20043	Bolt, 7/16 x 1"
42	20029	Bolt, 3/8 x 1"
43	452754	Carryback Roller Disc

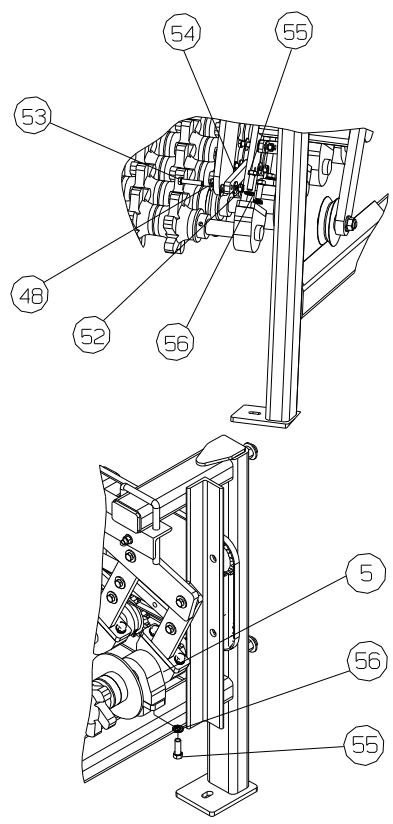
Eleven Row Sizer (431020)



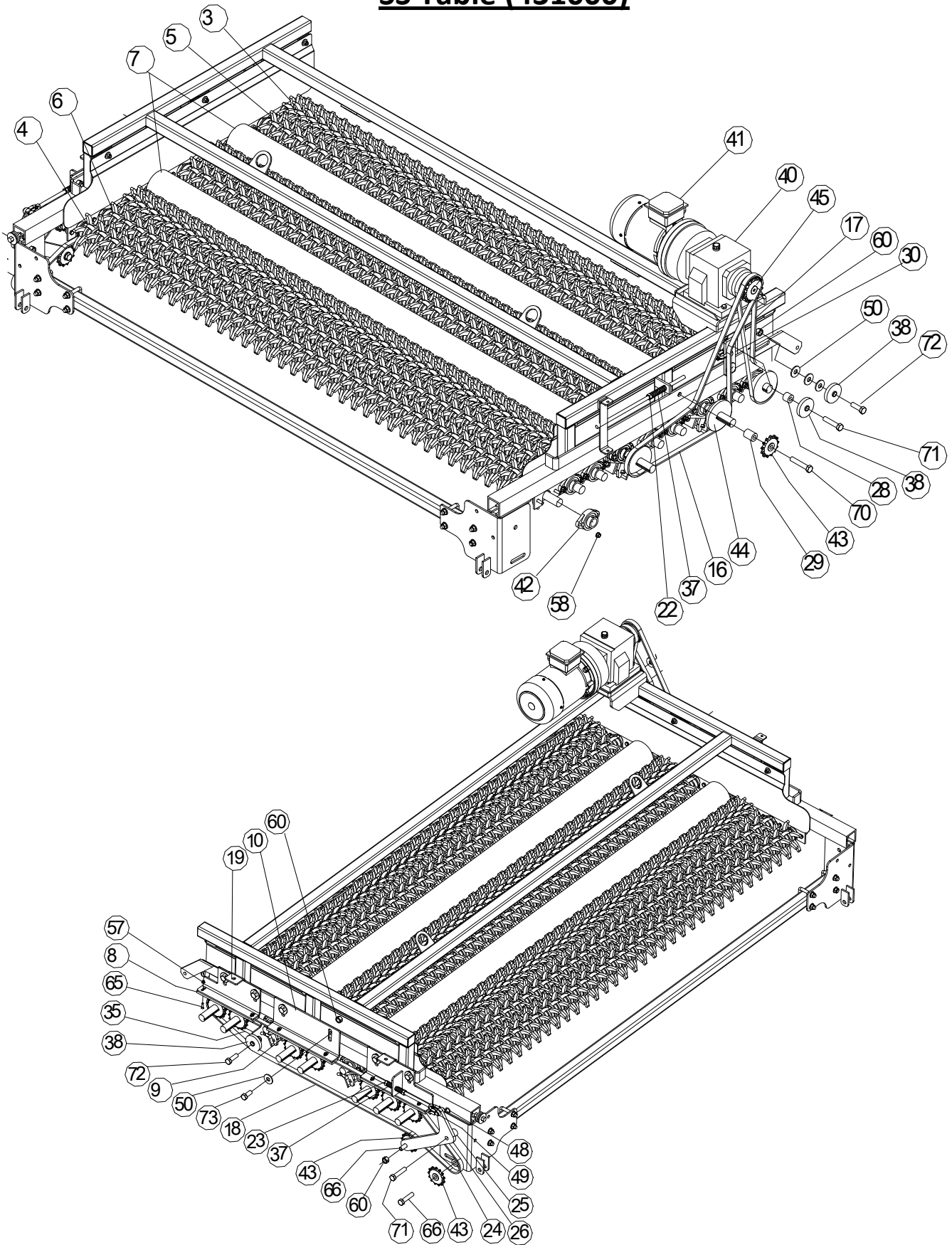


Item	Part No.	Description
1	431083	Shield - Sizer Inside LH
2	431084	Shield - Sizer Inside RH
3	20471	Nut, 3/8 NC Flange
4	20029	Bolt, 3/8 X 1 NC
5	82115	Bearing - 1.25" Bottom Mount
6	431080	Sizer Table Brace
7	431055	Assy - Potato Sizer Adj LH
-	431030	Assy - Potato Sizer Adj RH
8	94214	Sizer Adjuster Jack
9	431085	Sizer Adjustment Arm
10	431060	Assy, Sizer Roller w/Offset
11	431061	Assy - Sizer Roller
12	431045	Sizer Table Frame
13	431144	Sizer Curtain
14	20002	Bolt, 1/4 X 1 NC
15	20425	Nut, 1/2 NC Center Lock
16	20514	Washer, 7/16" Flat
17	431695	Shield - Motor Drive
18	20060	Bolt, 1/2" x 5" NC
19	20042	Bolt, 7/16" x 2" NC
20	20481	Nut, 7/16 NC Flange
21	96500	Gear Box
22	94419	Motor - 3Hp 3 Phase
23	20515	Washer, 1/2" Flat
24	20050	Bolt, 1/2" x 1" NC
25	431756	Sizer Drive Shield
26	431066	Rod -Threaded 3/8"
27	431064	Plastic - Chain Hold Down
28	431062	Angle - Chain Hold Down Frame

Item	Part No.	Description
29	431188	Rod - Chain Hold Down
30	94001	Sprocket - 5/8" x 6013
31	95252	Rubber Latch
32	96023	Sprocket - 5/8" x 6011
33	81188	Sprocket - 1 1/4" x 6015
34	431170	Chain - Sizer Drive #60
35	431057	Shaft - Sizer Roller
36	351072	Key - 1/4" x 1 1/2"
37	90057	Set Collar 1 1/4"
38	20541	Washer, 1 1/4" Flat
39	94211	Rubber Spacer
40	94212	Offset Spacer
41	94210	Star - Sizer Rubber 6pt
42	20428	Nut, 3/4" NC Center Lock
43	431075	Mount - Shield and Adj Jack
44	21024	U-Bolt, 2" x 3" x 3/8"
45	20471	Nut, 3/8" NC Flange
46	431095	Sizer Arm Guide
47	431099	Plastic Arm Guide
48	20513	Washer, 3/8" Flat
49	20423	Nut, 3/8" NC Center Lock
50	20119	Bolt, 3/8" x 1 3/4" NC
51	20085	Bolt, 3/4" x 3 1/2" NC
52	20423	Nut, 3/8" NC Center Lock
53	20119	Bolt, 3/8" x 1 3/4" NC
54	431088	Connector - Sizer Rollers
55	20047	Bolt, 7/16" x 1 1/4" NC
56	20503	Washer, 7/16" Lock
57	81190	Sprocket - 1 1/4 x 6016



SS Table (431000)



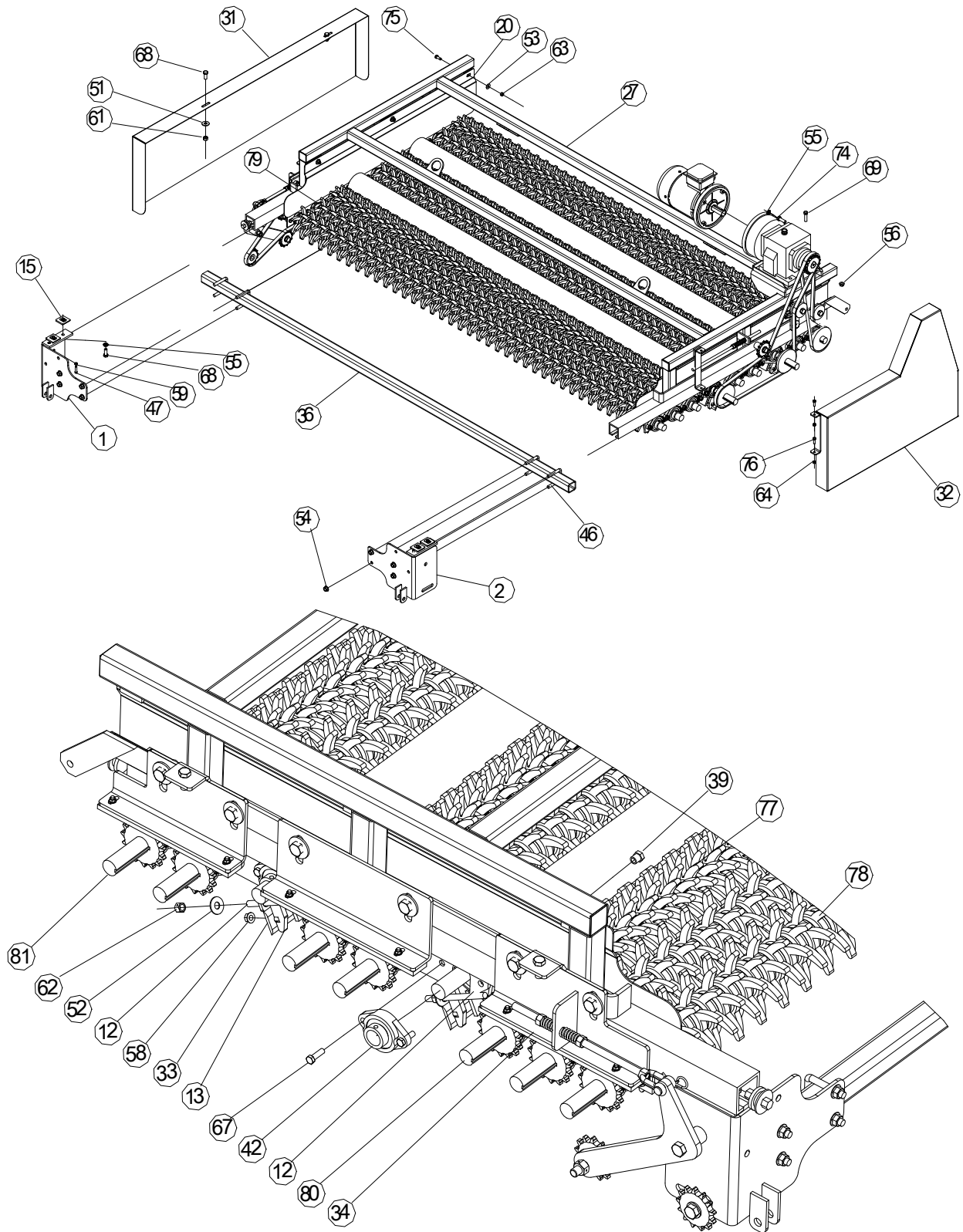
SS Table Cont. (431000)

Item	Part No.	Description
1	901420	Mount-RH
2	901415	Mount-LH
3	900455	12 Star Roller Assembly
4	460357	6 Star Roller Assembly
5	460356	6 Star Roller Assembly
6	460355	12 Star Roller Assembly
7	460350	Roller
8	458707	Plastic Strip
9	458706	Plastic Strip
10	458705	Chain Hold Down
11	452226	Scraper Tensioner - LH
12	452208	Scraper Tensioner - RH
13	452202	Scraper Mount - RH
14	452201	Scraper Mount - LH
15	431182	Chain Hold Down
16	431169	Chain, Steel Roller Drive
17	431168	Chain, Table Drive
18	431167	Chain, Roller Drive
19	431017	Chain Hold Down
20	431016	Inside Shield - RH
21	431015	Inside Shield - LH
22	431013	Spring Arm Adjuster
23	431010	Spring Arm Adjuster
24	431009	Spacer, Idler
25	431008	Spacer, Idler Arm
26	431007	Tensioner Arm
27	431005	Frame
28	431004	Tensioner Idler Spacer
29	431003	Idler Spacer

Item	Part No.	Description
30	431002	Chain Idler
31	430939	Shield, Roller Drive
32	430470	Shield, Table Drive
33	430275	Table Scraper Assembly
34	430225	Chain Hold Down
35	430212	Idler Mount
36	430211	Crossmember
37	96235	Scraper Spring
38	96023	Idler Sprocket
39	94612	Scraper Tensioner
40	96500	Gearbox
41	94419	Electric Motor – 3 Phase
-	94414	Electric Motor – 1 Phase
42	94091	Bearing, 1-1/4"
43	94001	Idler Sprocket, 6013 x 5/8"
44	81197	Sprocket, 6019 x 1-1/4"
45	81188	Sprocket, 6015 x 1-1/4"
46	21000	U-Bolt, 1/2 x 2 x 3"
47	20956	Set Screw, 5/16 x 1-1/4"
48	20913	Bridge Pin, #4
49	20887	Clevis Pin, 1/2 x 1-1/2
50	20536	Washer, 5/8"
51	20515	Washer, 1/2"
52	20514	Washer, 7/16"
53	20513	Washer, 3/8"
54	20505	Flange Nut, 1/2"
55	20504	Lock Washer, 1/2"
56	20481	Flange Nut, 7/16"
57	20475	Flange Nut, 1/4"

Item	Part No.	Description
58	20471	Flange Nut, 3/8"
59	20453	Jam Nut, 5/16"
60	20427	Centerlock Nut, 5/8"
61	20425	Centerlock Nut, 1/2"
62	20424	Centerlock Nut, 7/16"
63	20423	Centerlock Nut, 3/8"
64	20422	Centerlock Nut, 5/16"
65	20142	Countersunk Bolt
66	20124	Bolt, 5/8 x 2-3/4"
67	20120	Bolt, 3/8 x 1-1/4"
68	20118	Bolt, 1/2 x 1-1/4"
69	20117	Bolt, 7/16 x 1-3/4"
70	20068	Bolt, 5/8 x 3-1/2"
71	20067	Bolt, 5/8 x 3"
72	20065	Bolt, 5/8 x 2"
73	20064	Bolt, 5/8 x 1-1/2"
74	20052	Bolt, 1/2 x 1-1/2"
75	20029	Bolt, 3/8 x 1"
76	20016	Bolt, 5/16 x 1"
77	94095	6 Finger Star
78	94094	12 Finger Star
	94093	12 Finger Star Offset
79	94175	Offset Spacer, Star
80	460360	Roller Shaft, SS
81	900456	Roller Shaft, SS
82	90057	Set Collar, 1-1/4"
83	20541	Washer, 1-1/4"

SS Table Cont. (431000)



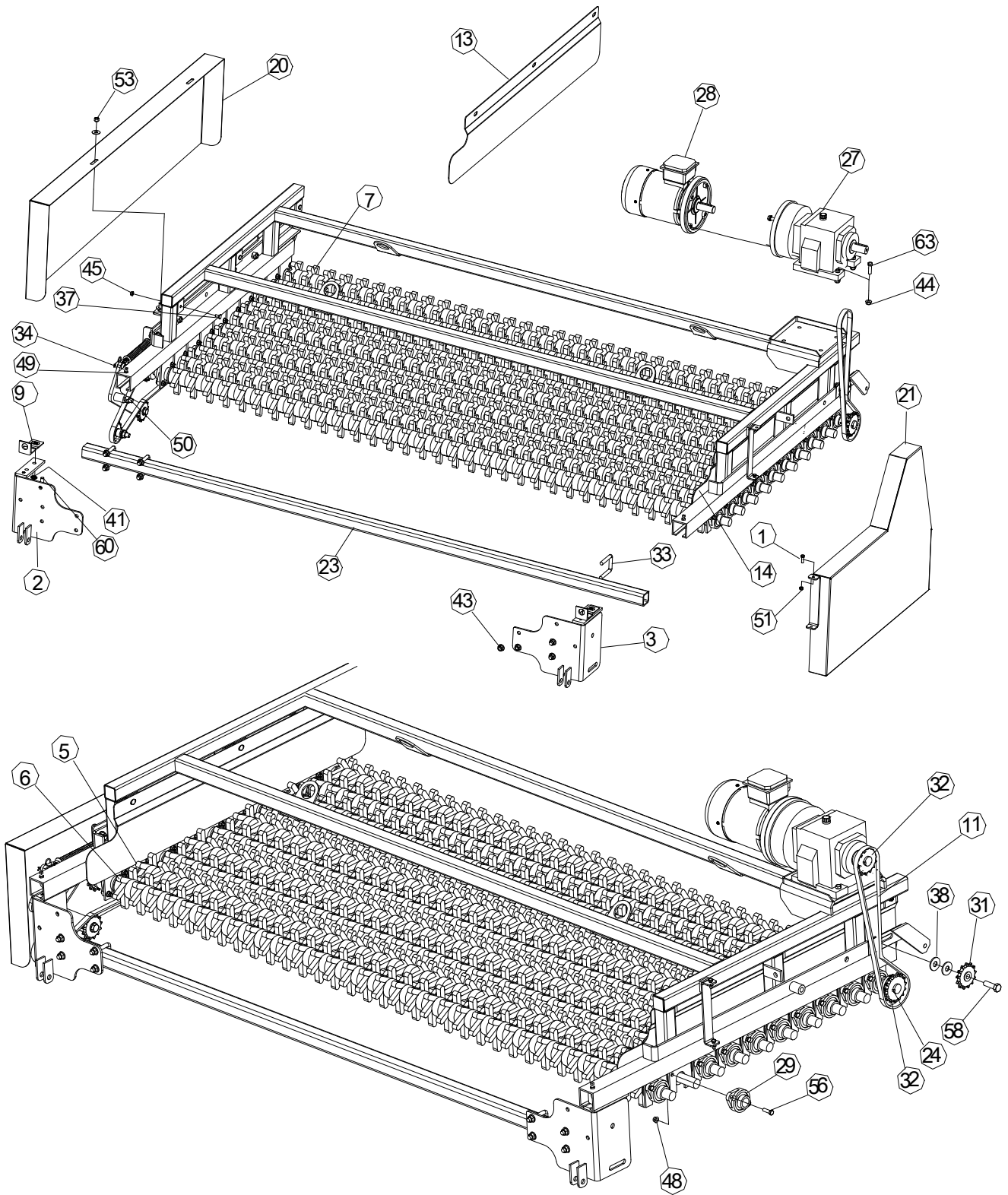
SS Table Cont. (431000)

Item	Part No.	Description
1	901420	Mount-RH
2	901415	Mount-LH
3	900455	12 Star Roller Assembly
4	460357	6 Star Roller Assembly
5	460356	6 Star Roller Assembly
6	460355	12 Star Roller Assembly
7	460350	Roller
8	458707	Plastic Strip
9	458706	Plastic Strip
10	458705	Chain Hold Down
11	452226	Scraper Tensioner - LH
12	452208	Scraper Tensioner - RH
13	452202	Scraper Mount - RH
14	452201	Scraper Mount - LH
15	431182	Chain Hold Down
16	431169	Chain, Steel Roller Drive
17	431168	Chain, Table Drive
18	431167	Chain, Roller Drive
19	431017	Chain Hold Down
20	431016	Inside Shield - RH
21	431015	Inside Shield - LH
22	431013	Spring Arm Adjuster
23	431010	Spring Arm Adjuster
24	431009	Spacer, Idler
25	431008	Spacer, Idler Arm
26	431007	Tensioner Arm
27	431005	Frame
28	431004	Tensioner Idler Spacer
29	431003	Idler Spacer

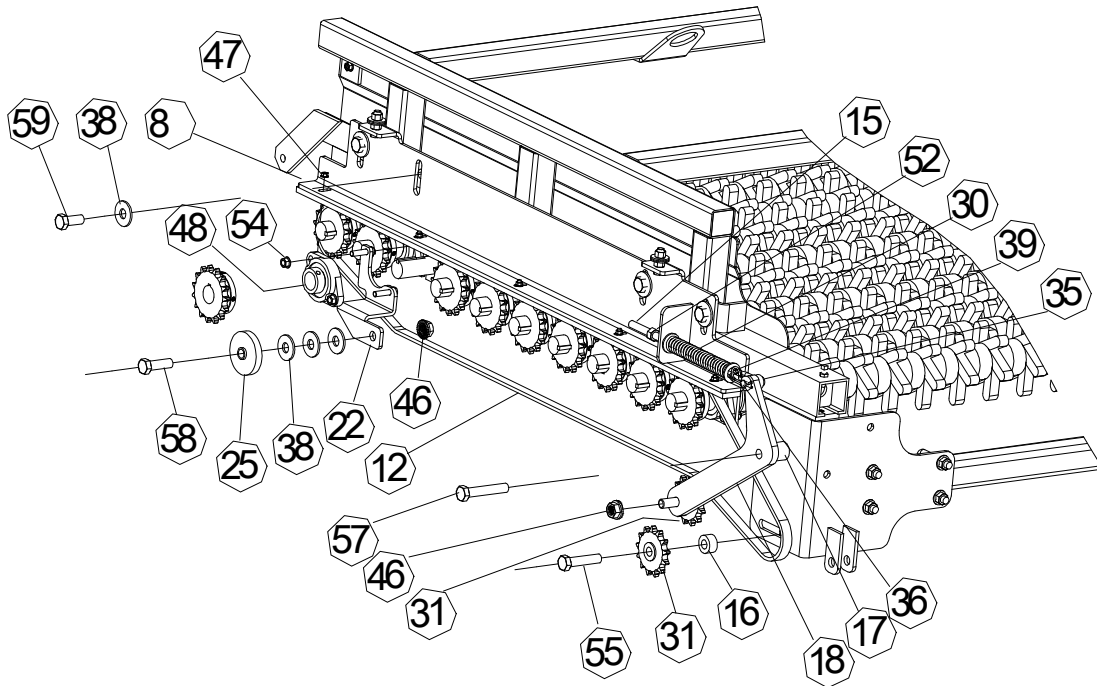
Item	Part No.	Description
30	431002	Chain Idler
31	430939	Shield, Roller Drive
32	430470	Shield, Table Drive
33	430275	Table Scraper Assembly
34	430225	Chain Hold Down
35	430212	Idler Mount
36	430211	Crossmember
37	96235	Scraper Spring
38	96023	Idler Sprocket
39	94612	Scraper Tensioner
40	96500	Gearbox
41	94419	Electric Motor – 3 Phase
	94414	Electric Motor – 1 Phase
42	94091	Bearing, 1-1/4"
43	94001	Idler Sprocket, 6013 x 5/8"
44	81197	Sprocket, 6019 x 1-1/4"
45	81188	Sprocket, 6015 x 1-1/4"
46	21000	U-Bolt, 1/2 x 2 x 3"
47	20956	Set Screw, 5/16 x 1-1/4"
48	20913	Bridge Pin, #4
49	20887	Clevis Pin, 1/2 x 1-1/2
50	20536	Washer, 5/8"
51	20515	Washer, 1/2"
52	20514	Washer, 7/16"
53	20513	Washer, 3/8"
54	20505	Flange Nut, 1/2"
55	20504	Lock Washer, 1/2"
56	20481	Flange Nut, 7/16"
57	20475	Flange Nut, 1/4"

Item	Part No.	Description
58	20471	Flange Nut, 3/8"
59	20453	Jam Nut, 5/16"
60	20427	Centerlock Nut, 5/8"
61	20425	Centerlock Nut, 1/2"
62	20424	Centerlock Nut, 7/16"
63	20423	Centerlock Nut, 3/8"
64	20422	Centerlock Nut, 5/16"
65	20142	Countersunk Bolt
66	20124	Bolt, 5/8 x 2-3/4"
67	20120	Bolt, 3/8 x 1-1/4"
68	20118	Bolt, 1/2 x 1-1/4"
69	20117	Bolt, 7/16 x 1-3/4"
70	20068	Bolt, 5/8 x 3-1/2"
71	20067	Bolt, 5/8 x 3"
72	20065	Bolt, 5/8 x 2"
73	20064	Bolt, 5/8 x 1-1/2"
74	20052	Bolt, 1/2 x 1-1/2"
75	20029	Bolt, 3/8 x 1"
76	20016	Bolt, 5/16 x 1"
77	94095	6 Finger Star
78	94094	12 Finger Star
	94093	12 Finger Star Offset
79	94175	Offset Spacer, Star
80	460360	Roller Shaft, SS
81	900456	Roller Shaft, SS
82	90057	Set Collar, 1-1/4"
83	20541	Washer, 1-1/4"

Quick Adjust Table (431180)



Quick Adjust Table Cont. (431180)

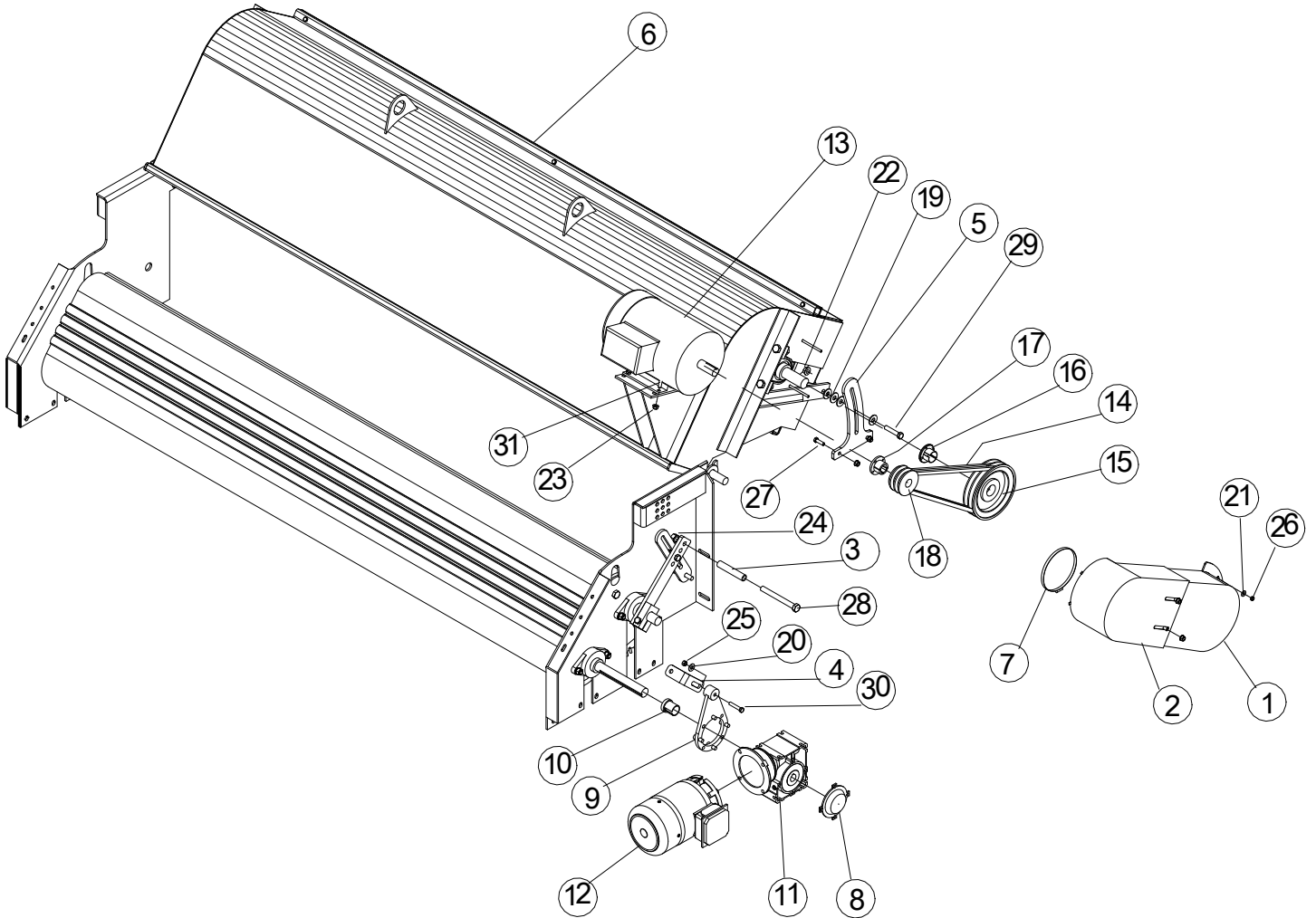


Item	Part No.	Description
1	20016	Bolt, 5/16 x 1"
2	901420	Table Mount - RH
3	901415	Table Mount - LH
4	458708	Plastic Chain Hold Down
5	431930	Right Offset Assembly
6	431929	Left Offset Assembly
7	431928	Drive Roller Assembly
8	431688	Chain Hold Down
9	431182	Hold Down
10	431181	Frame, QA Table
11	431168	Chain, Table Drive
12	431167	Chain, Roller Drive
13	431016	Inside Shield - RH
14	431015	Inside Shield - LH
15	431010	Spring Arm Adjuster
16	431009	Spacer, Idler
17	431008	Spacer, Idler Arm
18	431007	Tensioner Arm
19	431003	Spacer
20	430939	Shield, Roller Drive
21	430470	Shield, Table Drive
22	430278	Roller Idler Mount

Item	Part No.	Description
23	430211	Crossmember Tube
24	351072	Key, ¼ x 1-1/2"
25	96023	Idler Sprocket, 6011 x 5/8"
26	95048	Chain, #60
27	96500	Gearbox
28	94419	Motor - 3 Phase
-	94414	Motor - Single Phase
29	94091	Bearing, 1-1/4"
30	94016	Spring,
31	94001	Idler Sprocket, 6013 x 5/8"
32	81188	Sprocket, 6015 x 1-1/4"
33	21000	U-Bolt, ½ x 2 x 3"
34	20956	Set Screw, 5/16 x 1-1/4"
35	20913	Bridge Pin, #4
36	20887	Clevis Pin, 3/16 x 2
37	20761	Carriage Bolt, 5/16 x ¾"
38	20536	Washer, 5/8"
39	20515	Washer, ½"
40	20514	Washer, 7/16"
41	20504	Lock Washer, ½"
42	20503	Lock Washer, 7/16"
43	20485	Flange Nut, ½"

Item	Part No.	Description
44	20481	Flange Nut, 7/16"
45	20479	Flange Nut, 5/16"
46	20476	Flange Nut, 5/8"
47	20475	Flange Nut, ¼"
48	20471	Flange Nut, 3/8"
49	20453	Jam Nut, 5/16"
50	20427	Centerlock Nut, 5/8"
51	20422	Centerlock Nut, 5/16"
52	20404	Nut, ½"
53	20403	Nut, 7/16"
54	20142	Countersunk Bolt
55	20124	Bolt, 5/8 x 2-3/4"
56	20120	Bolt, 3/8 x 1-1/4"
57	20067	Bolt, 5/8 x 3"
58	20065	Bolt, 5/8 x 2"
59	20064	Bolt, 5/8 x 1-1/4"
60	20050	Bolt, ½ x 1"
61	20042	Bolt, 7/16 x 2"
62	20030	Bolt, 3/8 x 1-1/2"
63	20023	Bolt, 7/16 x 1-1/2"

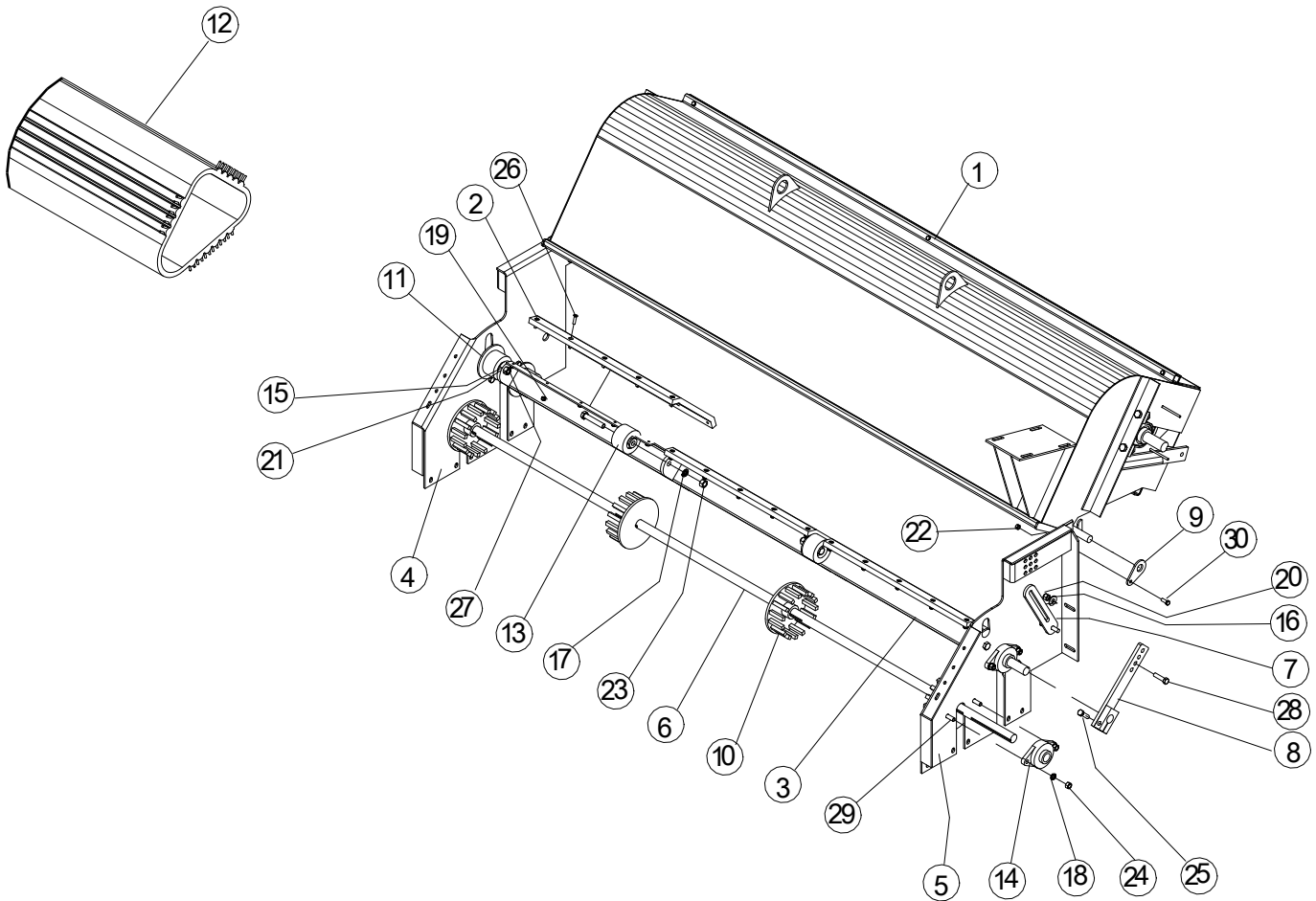
Optional Pegbelt and Blower Drive (4551)



Item	Part No.	Description
1	459297	Shield - Male
2	459292	Shield - Female
3	459185	Handle - Pipe
4	431177	Support
5	431113	Mount, Fan Angle Adjustment
6	430990	Pegbelt and Blower Assembly
7	96152	Hose Clamp
8	94609	Gearbox Cover
9	94608	Torque Arm
10	94606	Reducer Bushing, 1-1/4"
11	94603	Gearbox
12	94429	Motor - 3 Phase
	94413	Motor - Single Phase
13	94426	Motor - 3 Phase
	94425	Motor - Single Phase
14	94034	Belt, Drive
15	94032	Double Pulley

Item	Part No.	Description
16	81483	Hub
17	81478	Double Hub
18	81370	Double Pulley
19	20515	Washer, 1/2"
20	20513	Washer, 3/8"
21	20511	Washer, 1/4"
22	20505	Flange Nut, 1/2"
23	20471	Flange Nut, 3/8"
24	20427	Centerlock Nut, 5/8"
25	20402	Nut, 3/8"
26	20400	Nut, 1/4"
27	20120	Bolt, 3/8 x 1-1/4"
28	20073	Bolt, 5/8 x 6"
29	20055	Bolt, 1/2 x 2-1/2"
30	20031	Bolt, 3/8 x 2"
31	20029	Bolt, 3/8 x 1"

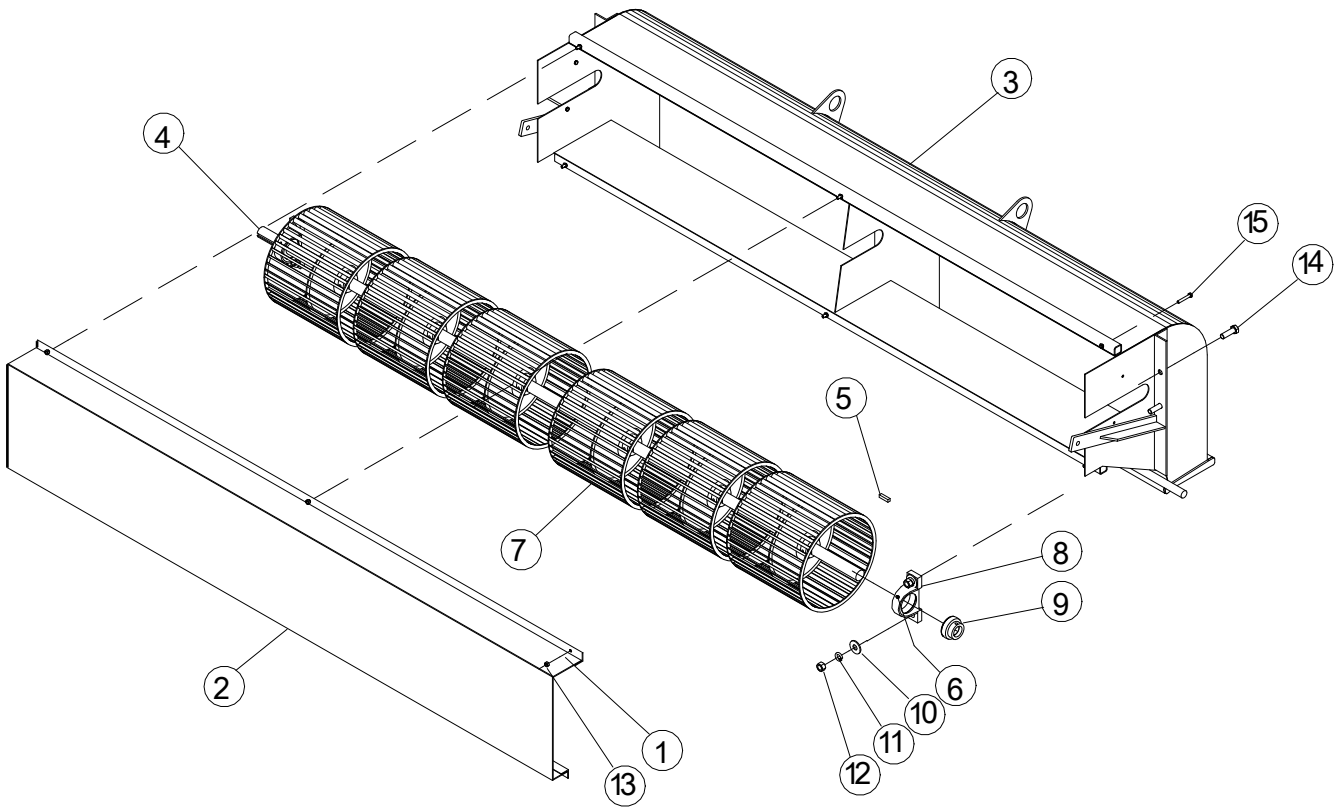
Pegbelt Parts (430990)



Item	Part No.	Description
1	459800	Blower Fan Assembly
2	459740	Peg Belt Plastic
3	459730	Frame
4	459720	Side Mount - Right
5	459710	Side Mount - Left
6	459466	Peg Belt Shaft
7	459188	Adjustment Lock
8	459180	Handle
9	459035	Retainer
10	94184	Sprocket, Belt
11	94183	Flange Roller
12	94114	Peg Belt
13	94067	Rubber Roller
14	82120	Bearing, 1-1/4"
15	20536	Washer, 5/8"

Item	Part No.	Description
16	20515	Washer, 1/2"
17	20506	Lock Washer, 5/8"
18	20504	Lock Washer, 1/2"
19	20484	Nut, 5/16" Nylock
20	20483	Nut, 1/2" Nylock
21	20427	Centerlock Nut, 5/8"
22	20423	Centerlock Nut, 3/8"
23	20406	Nut, 5/8"
24	20404	Nut, 1/2"
25	20152	Bolt, 1/2 x 1-3/4"
26	20133	Countersunk Bolt
27	20068	Bolt, 5/8 x 3-1/2"
28	20053	Bolt, 1/2 x 2"
29	20052	Bolt, 1/2 x 1-1/2"
30	20029	Bolt, 3/8 x 1"

Blower Parts (459800)

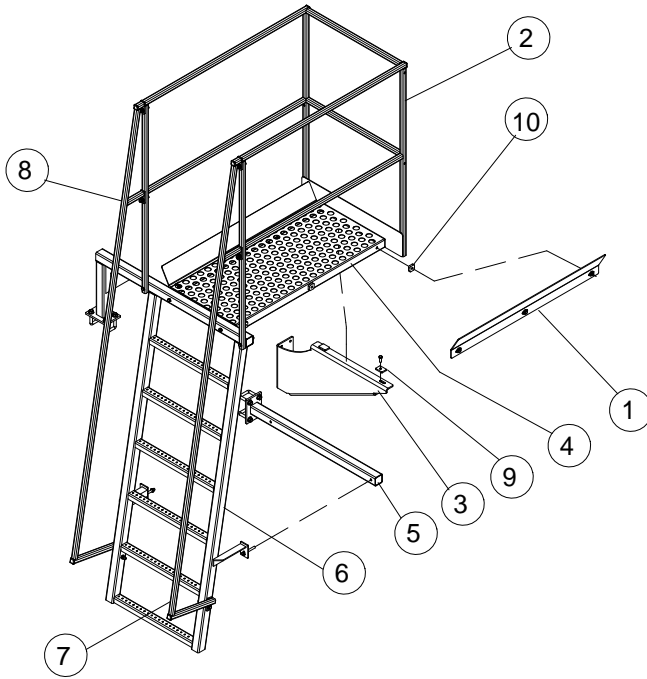


Item	Part No.	Description
1	20501	Lock Washer, 5/16"
2	459835	Screen
3	459820	Blower Case
4	459817	Blower Shaft
5	351074	Key, 3/8 x 1"
6	95036	Grease Fitting
7	94186	Blower Wheel
8	82221	Pillow Block

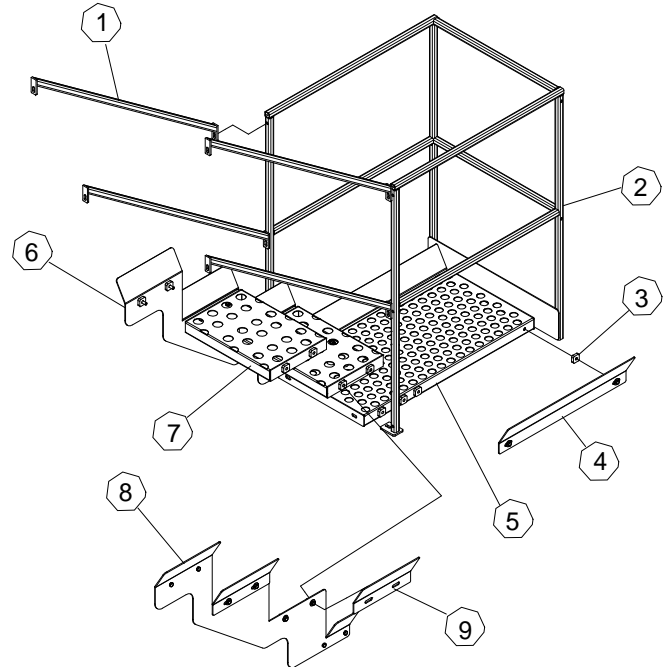
Item	Part No.	Description
9	82045	Bearing w/ Collar, 1-7/16"
10	20536	Washer, 5/8"
11	20506	Lock Washer, 5/8"
12	20406	Nut, 5/8"
13	20401	Nut, 5/16"
14	20065	Bolt, 5/8 x 2"
15	20018	Bolt, 5/16 x 2"

Catwalks

Left Platform (455630)



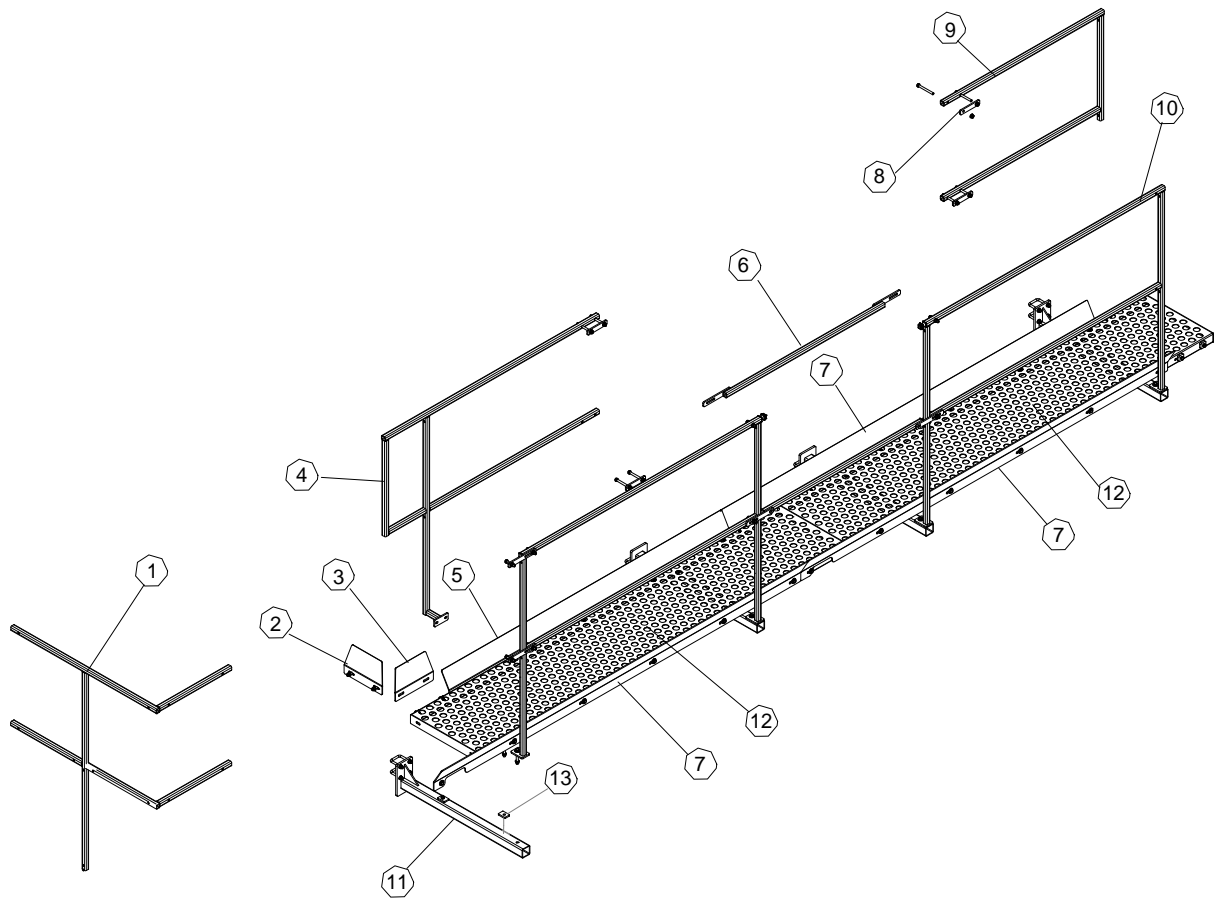
Right Platform



Item	Part No.	Description
1	455636	Kickplate- 40-1/4"
2	455635	Handrail – LH Platform
3	455634	Brace – LH Platform
4	455632	Platform- 40-1/4"
5	455629	Ladder Support
6	455625	Ladder
7	455619	Handrail - RH
8	455615	Handrail - LH
9	450118	Tab- Conveyor Mount
10	431802	Spacer- Kickplate

Item	Part No.	Description
1	455670	Handrail - Steps
2	455660	Handrail – RH Front Platform
3	431802	Spacer - Kickplate
4	431666	Kickplate – 26-3/4"
5	455678	Platform – RH Front
6	455651	Kickplate – LH Steps
7	455676	Platform - Steps
8	455650	Kickplate – RH Steps
9	455683	Kickplate – 12" Steps

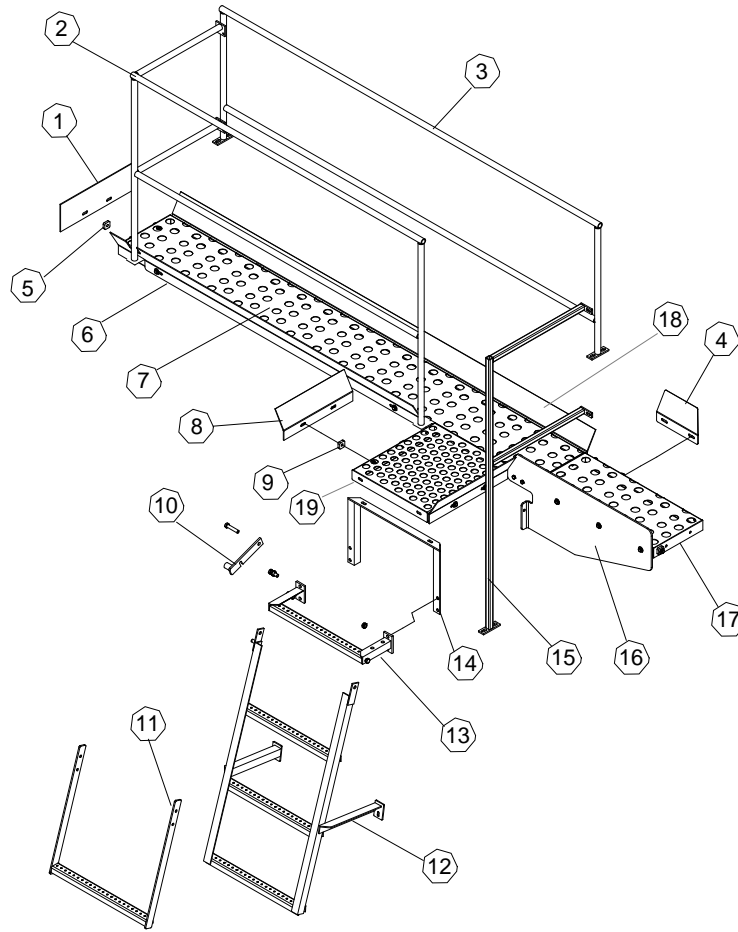
Catwalks Cont.



Item	Part No.	Description
1	455664	Handrail - Corner
2	455655	Kickplate - Corner Rear
3	455654	Kickplate - Corner
4	455703	Handrail - Rear Primary
5	455653	Kickplate - 72-13/16"
6	455695	Handrail - Connector
7	455652	Kickplate - 94-7/8"

Item	Part No.	Description
8	455713	Handrail Strap
9	455710	Handrail - Front Primary
10	455645	Handrail - Side Outer
11	431776	Platform - Mount
12	455674	Platform - Side
13	450118	Platform Tab

Catwalks Cont.



Item	Part No.	Description
1	450731	Kickplate – Rear End
2	460447	Handrail - Rear
3	460440	Handrail – Rear Inside
4	455655	Kickplate- Corner
5	431802	Spacer - Kickplate
6	450733	Kickplate - Rear
7	460445	Platform - Rear
8	450734	Kickplate 16-1/2"
9	431802	Spacer - Kickplate
10	450725	Ladder Holder

Item	Part No.	Description
11	455697	Ladder Extension
12	450710	Ladder - Rear
13	450720	Ladder Top Step
14	450610	Ladder Mount
15	455641	Handrail - Ladder
16	455640	Kickplate – Platform Connector
17	455680	Platform - Corner
18	450730	Kickplate – Rear Inside
19	450615	Platform – Ladder Top

Electrical

Call the parts department for electrical and control box items.

Motors, Gearboxes, and Conveyor Specifications

Conveyor Assembly p/n	Final Conveyor Specs.	Motor p/n 3 Phase	Motor p/n 1 phase	Electrical Panel Reference Number	Start Up Stage	Motor (HP)	Required Amps (Single Phase)	Required Amps 3 Phase (204V)	Required Amps 3 Phase Low (230V)	Required Amps 3 Phase High (480V)	Shaft Size	Gearbox p/n	Gearbox Ratio
460545	Front Secondary Dirt Conveyor	94416	94411	1	1	1	6.4	3.7	3.4	1.7	1.25	94627	30:1
460545	Rear Secondary Dirt Conveyor	94416	94411	2	1	1	6.4	3.7	3.4	1.7	1.25	94627	30:1
460500	Front Primary Clean Potato Conveyor	94417	94412	3	1	1.5	9.6	5	4.6	2.7	1.25	94603	15:1
455605	Front Side Potato Conveyor	94416	94411	4	1	1	9.6	3.7	3.4	2.7	1.25	94603	15:1
455596	Long Side Dirt Conveyor	94418	94413	5	1	2	10	6.7	6.2	3.1	1.25	94626	20:1
460525	Rear Primary Clean Potato Conveyor	94417	94412	6	1	1.5	9.6	5	4.6	2.7	1.25	94603	15:1
452320	Rear Side Potato Conveyor	94416	94411	7	1	1	9.6	3.7	3.4	1.7	1.25	94603	15:1
460525	Front Final Clean Potato Conveyor	94418	94413	8	1	2	10	6.7	6.2	3.1	1.25	94603	15:1
460525	Rear Final Clean Potato Conveyor	94418	94413	9	1	2	10	6.7	6.2	3.1	1.25	94603	15:1
431230	Final Dirt Conveyor - (opt Rev Switch)	94418	94413	10	1	2	10	6.7	6.2	3.1	1.25	94605	20:1
430725	Front Primary - VFD	94419	94414	11	2	3	16.8	9.1	8.4	4.2	1.5	94588	29.65:1
455590	Front Secondary - VFD	94429	94430	12	2	2	16.8	6.7	6.2	3.1	1.375	94589	29.65:1
430905	Rear Primary - VFD	94419	94414	13	2	3	16.8	9.1	8.4	4.2	1.5	94588	29.65:1
455595	Rear Secondary - VFD	94429	94430	14	2	2	16.8	6.7	6.2	3.1	1.375	94589	29.65:1
431020	Sizer	94419	94414	15	3	3	16.8	9.1	8.4	4.2	-	96500	20.95:1
460528	Center Dirt Conveyor	94417	94412	16	3	1.5	9.6	5	4.6	2.7	1.25	94603	15:1
-	Dirt Table	94419	94414	17	3	3	16.8	9.1	8.4	4.2	-	96500	20.95:1
431940	Elevator (Top)	94419	94414	18	3	3	16.8	9.1	8.4	4.2	-	96500	20.95:1
431939	Elevator (Bottom)	94419	94414	19	3	3	16.8	9.1	8.4	4.2	-	96500	20.95:1
430990	Peg Belt - VFD	94418	94413	20	3	2	10	6.7	6.2	3.1	1.25	94603	15:1
459800	Peg Fan	94426	94425	21	3	5	23	13.9	13.4	6.7	-	-	-
							Total Amps Without Peg Belt and Blower	235.2	124.6	115	59.7		
							Total Amps With Peg Belt and Blower	268.2	145.2	134.6	69.5		

Reference Number	Conveyor Assembly p/n	Conveyor Description	Belt Size & Length	Belt #
1	460545	Front Secondary Dirt Conveyor	20" x 280-1/2"	460546
2	460545	Rear Secondary Dirt Conveyor	20" x 280-1/2"	460546
3	460500	Front Primary Clean Potato Conveyor	30" x 225"	460501
4	455605	Front Side Potato Conveyor	30" x 102-1/2"	452321
5	455596	Long Side Dirt Conveyor	20" x 712"	455598
6	460525	Rear Primary Clean Potato Conveyor	30" x 225"	460501
7	452320	Rear Side Potato Conveyor	30" x 102-1/2"	452321
8	460525	Front Final Clean Potato Conveyor	30" x 348-1/2"	-
-	451350	Folding Extension	30" x 114"	451358
9	460525	Rear Final Clean Potato Conveyor	30" x 312-1/2"	460527
-	451350	Folding Extension	30" x 114"	451358
10	431230	Final Dirt Conveyor - (opt Rev Switch)	36" x 312-1/2"	452290
11	430125	Front Primary	94-1/2" x 112 Links	94201
12	455590	Front Secondary	94-1/2" x 58 Links	94470
13	430905	Rear Primary	94-1/2" x 62 Links	94202
14	455595	Rear Secondary	94-1/2" x 58 Links	94470
16	460528	Center Dirt Conveyor	30" x 312-1/2"	460527
18	431940	Elevator (Top)	80" x 376"	94205
19	431939	Elevator (Bottom)	80" x 376"	94205
20	430990	Peg Belt	-	94114

NOTE: Custom manufactured machines may be configured differently than listed above. Consult a licensed electrician for any electrical service on the machine. Also, all Gearbox fluids must be food grade.

Harriston Industries

Box 378, Minto ND 58261
(800)437-8205 (701)248-3286
Fax: (701)248-3070

www.harriston-mayo.com harriston@invisimax.com