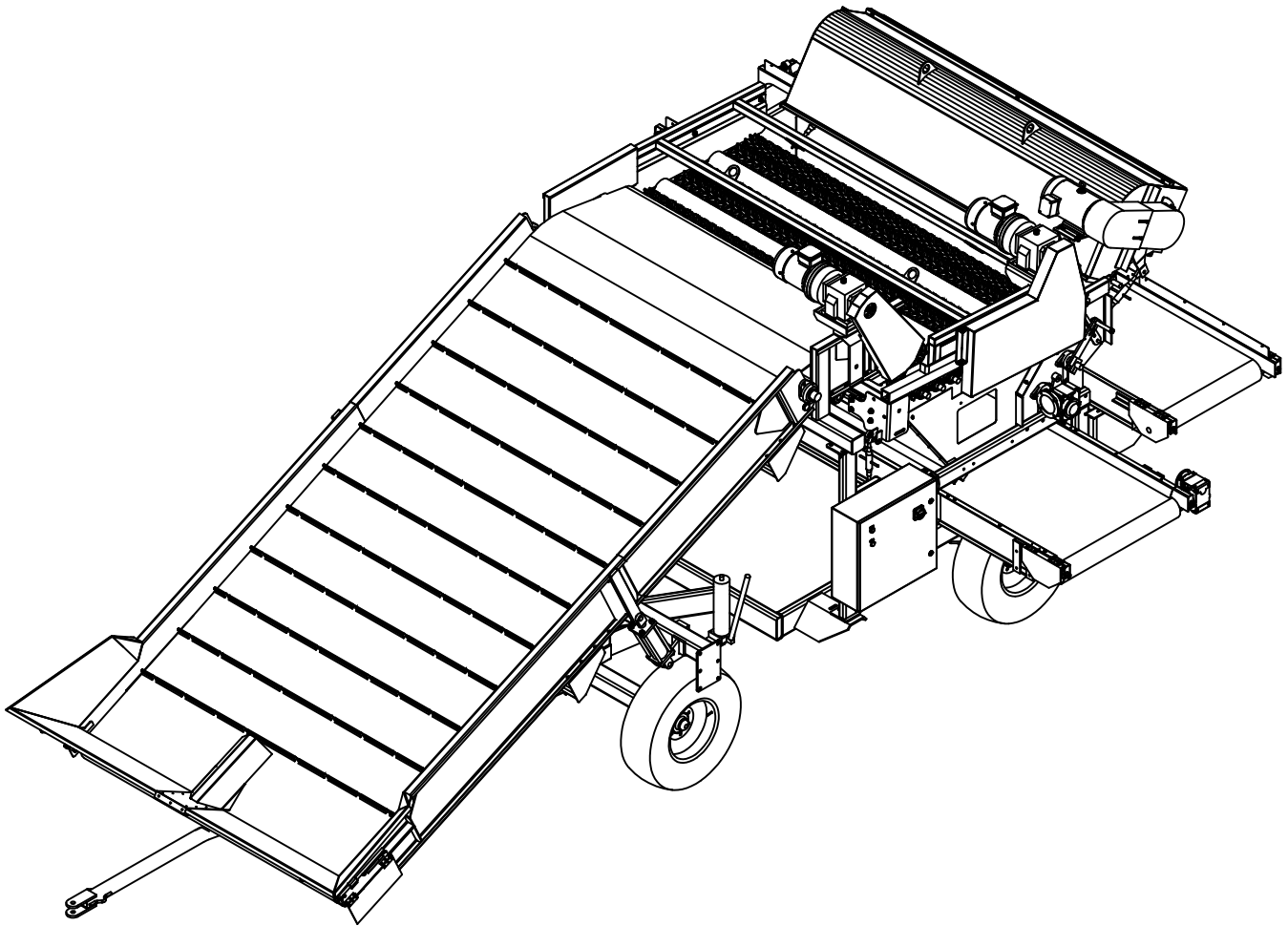


# Harriston

*When Quality Counts*



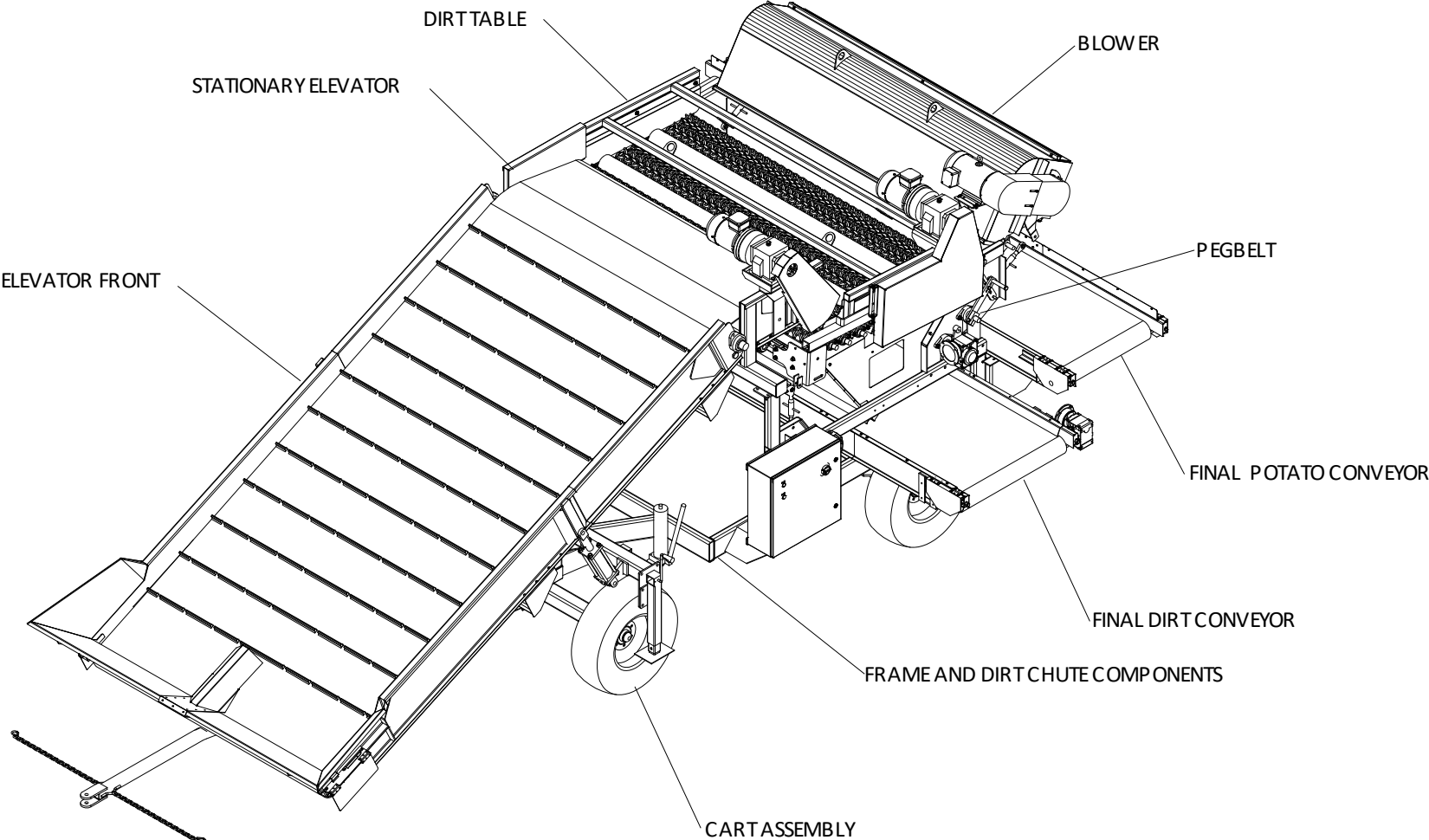
Model 240 Speed Clean  
Parts Book 2018



# Table of Contents

CART ASSEMBLY .....	1
FRAME AND DIRT CHUTE COMPONENTS.....	2
FINAL POTATO CONVEYOR .....	3
FINAL DIRT CONVEYOR .....	4
TOP STATIONARY ELEVATOR .....	5
FRONT ELEVATOR.....	6
SS TABLE .....	7
QUICK ADJUST TABLE .....	11
PEGBELT AND BLOWER DRIVE .....	13
PEGBELT.....	14
BLOWER.....	15
MOTORS, GEARBOXES, AND CONVEYOR SPECIFICATIONS .....	16

# Visual Table of Contents



## **PARTS LIST**

This Manual contains a parts list for your machine. The numbers after the component headings refer to the numbered components in the Speed Clean Operators Manual

## **WHEN ORDERING PARTS**

Always give your dealer the Model and Serial Number of your machine to assist him in ordering and obtaining the correct parts. Use the exploded view and tabular listing of the area of interest to exactly identify the required part.

## **USING THE MANUAL**

Parts data consists of exploded view illustrations and associated parts list tables, which are read as follows:

- **REFERENCE NUMBER**

The Reference Number is the identifier number from the illustration. For example, Number 3 on an illustration points to a component which is item 3 on the accompanying table. The abbreviation NS means the item is not shown in the illustration.

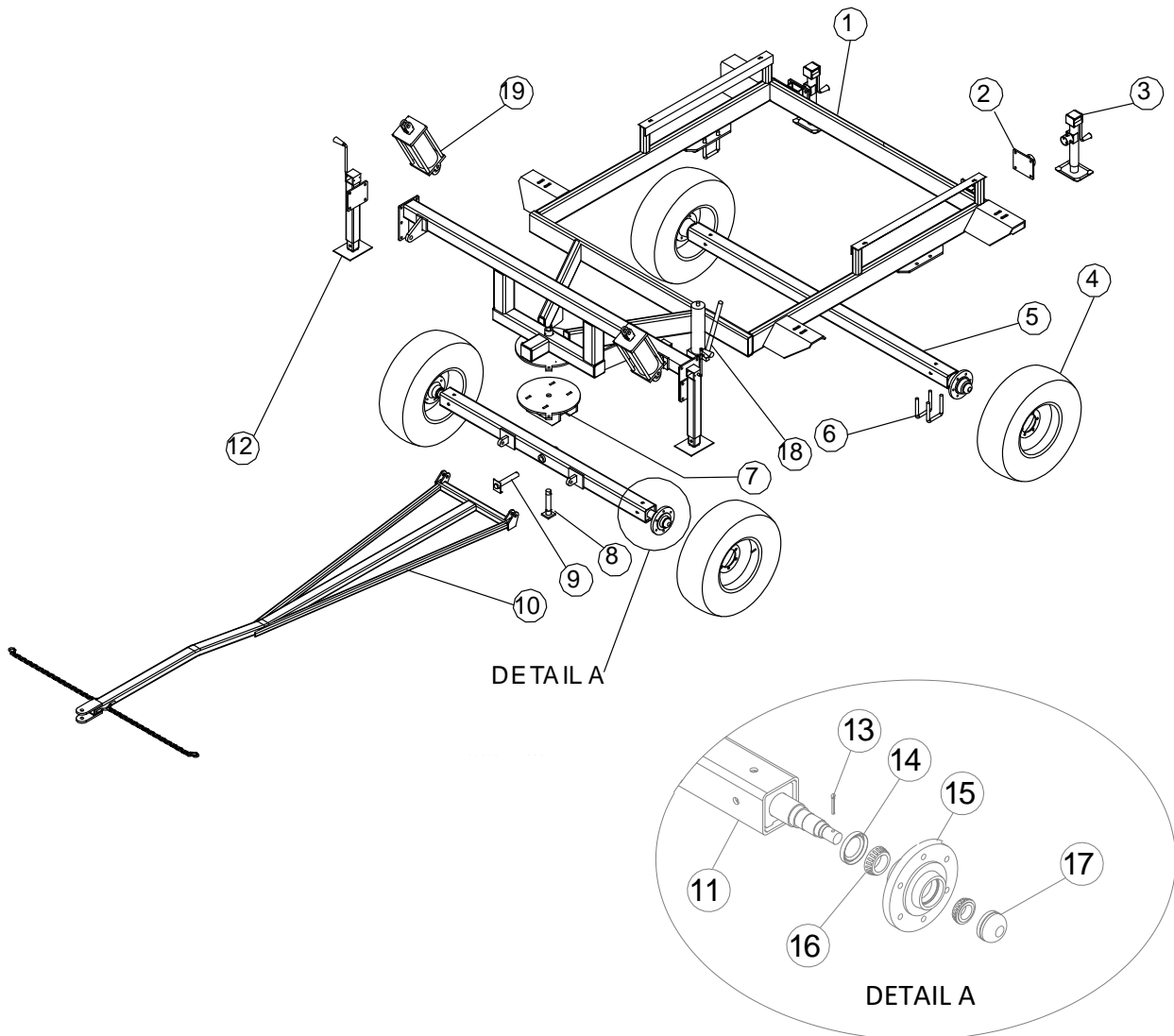
- **PART NUMBER**

The Part Number is the number by which the component may be identified and ordered from Harriston Industries and their network of dealers.

- **DESCRIPTION**

This column contains the name and description of the part.

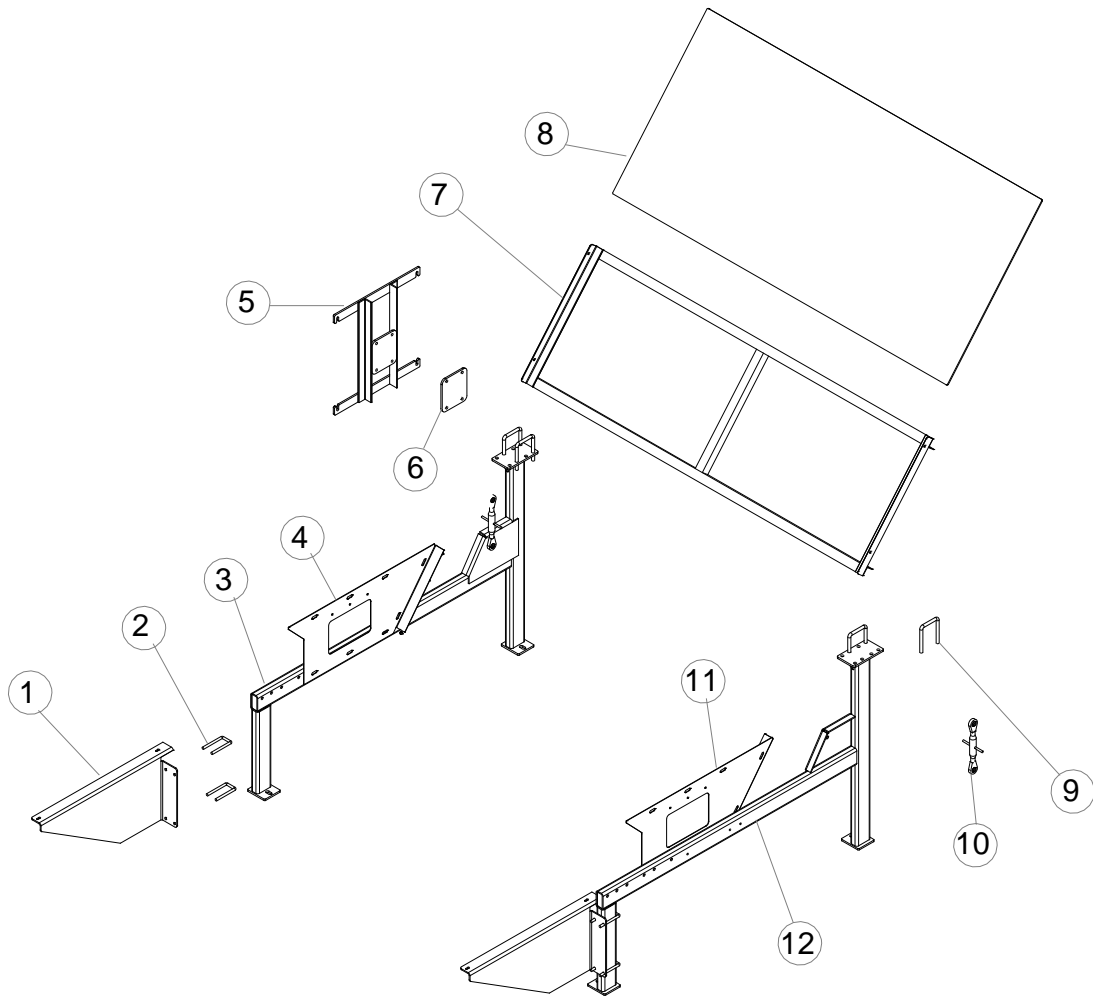
# Cart Assembly #432250



Item	Part No.	Description
1	432255	Cart Weldment
2	457556	Jack Swivel Mount
3	94259	Rear Jack
4	94050	Tire/Rim Assembly 9.5L x 15, 6 Bolt
5	460940	Rear Axle Assembly
6	21014	U-Bolt, 3/4" x 4 x 5 1/2"
7	457828	Front Axle Yoke
8	457835	Pivot Pin Weldment
9	457815	Axle Pin Weldment
10	457830	Hitch Pole

Item	Part No.	Description
11	459195	Front Axle Assembly
12	457860	Front Jack
13	20826	Cotter Pin 3/16" x 1 1/2"
14	95086	Seal
15	94051	Hub Assembly with Cups
16	95020	Tapered Bearing
17	90015	Dust Cap
18	94020	Cylinder, Hyd. 2 1/2 X 12"
19	95191	Jack, Hyd. Pump

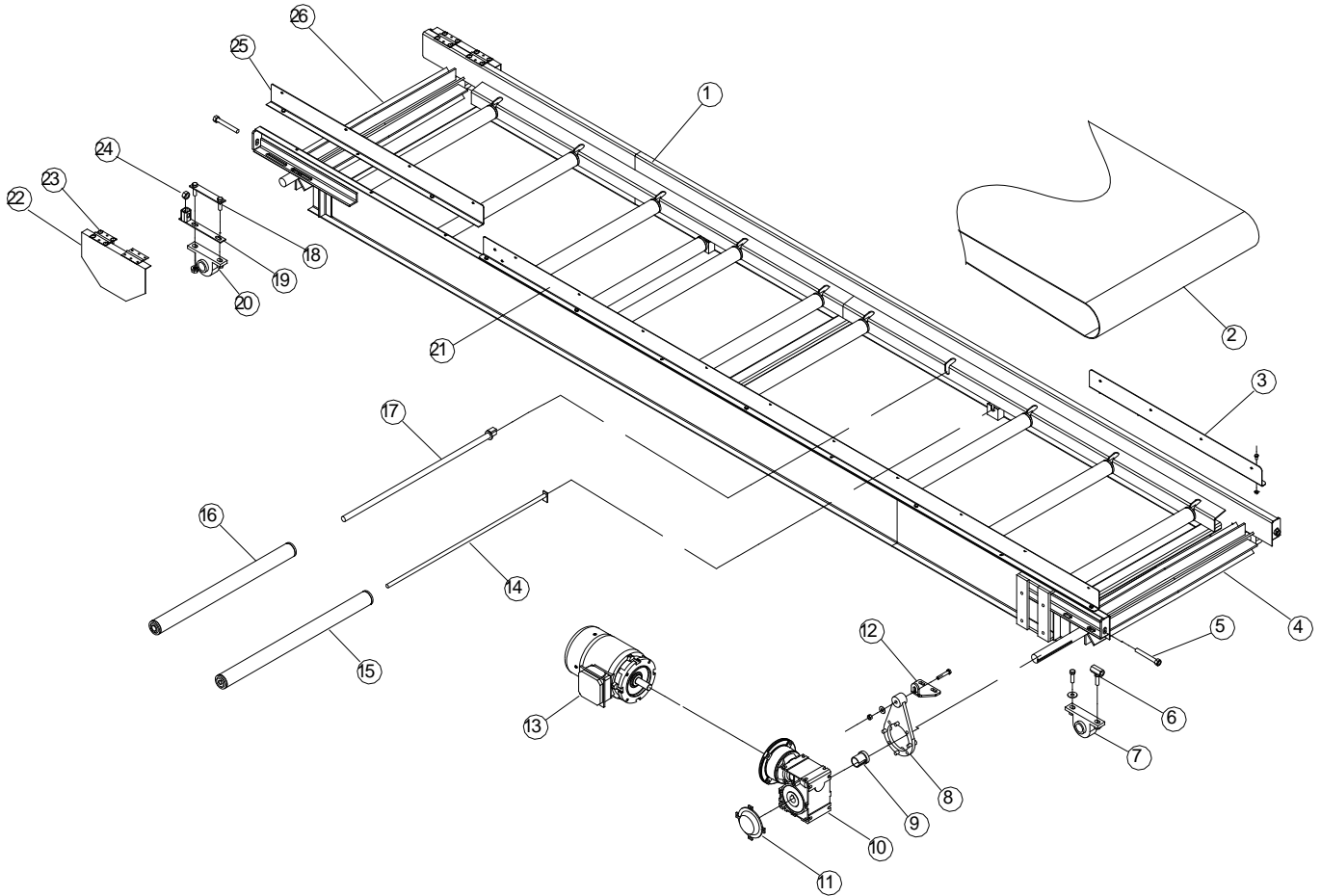
# Frame and Dirt Chute Components



Item	Part No.	Description
1	432266	Conveyor Mount
2	21001	U-bolt 1/2 x 2 x 5 1/4"
3	432260	Frame Weldment Left
4	453537	Dirt Chute Support Plate Left
5	455739	Electrical Panel Mount Weldment
6	455723	Panel Mount Backplate

Item	Part No.	Description
7	432271	Dirt Chute Frame Weldment
8	432275	Dirt Chute Plastic
9	21009	U-bolt 5/8 x 4 x 5 1/2"
10	21203	Turnbuckle
11	453534	Dirt Chute Support Plate Right
12	432265	Frame Weldment Right

# Final Potato Conveyor #460525

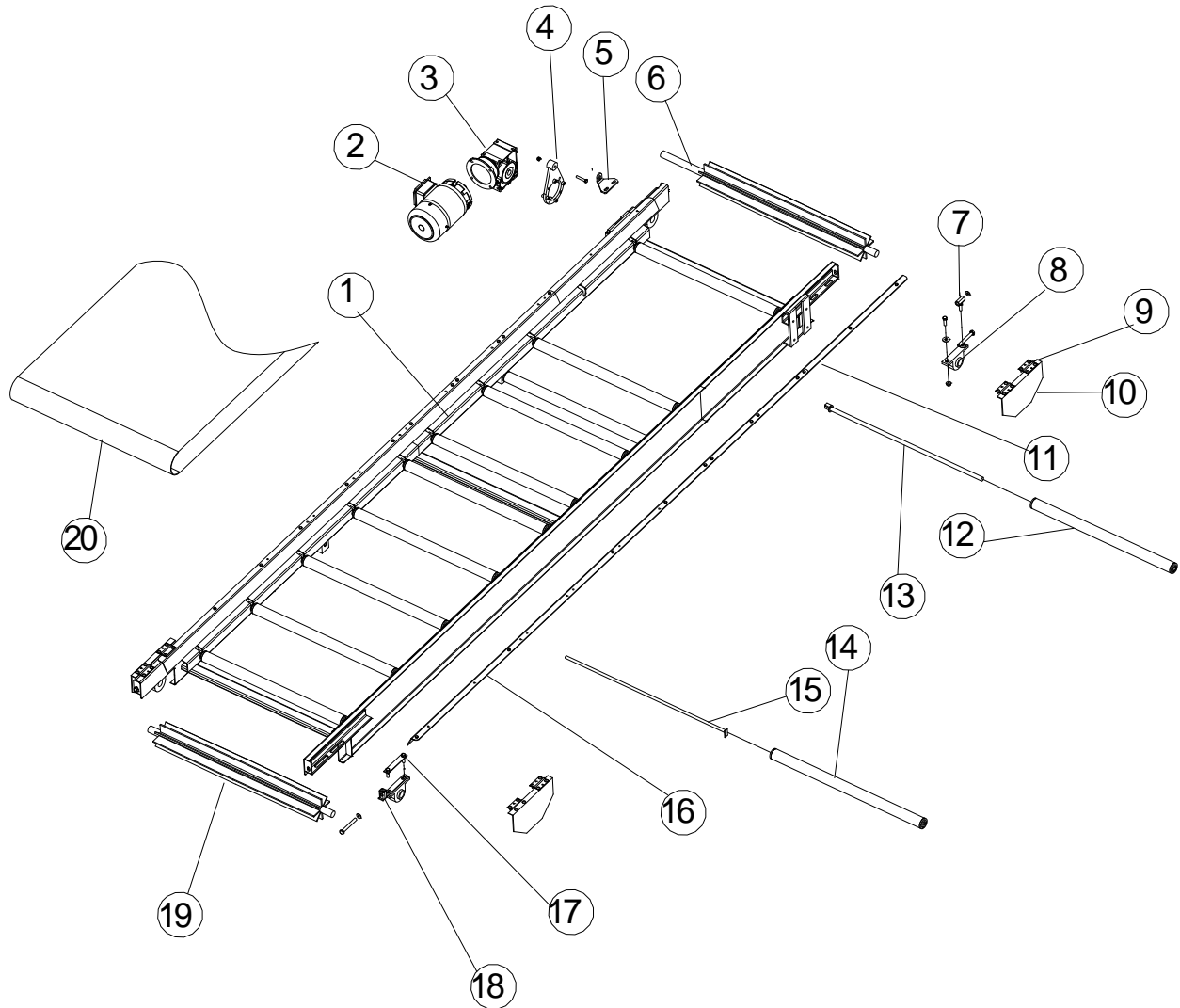


Item	Part No.	Description
1	460535	Weldment- Lower Cross Conveyor
2	460527	Belt- 30" x 312 1/2"
3	452593	Side Panel 32 1/2"
4	452600	30" Drive Roller
5	20702	1/2" x 4" Threaded Rod
6	452115	Bearing Tightener Bolt Weldment
7	94040	1 1/4" Pillow Block Assembly
8	94608	Arm- Motor Torque
9	94606	Coupler- Reducer
10	94603	Gearbox- 15:1
11	94609	Cover- Gearbox
12	452264	Gearbox Support- Nord
13	94412	Motor- Electric 1.5 HP 1 Phase
-	94417	Motor- Electric 1.5 HP 3 Phase

Item	Part No.	Description
14	452431	Retainer Rod Weldment- 29 3/4"
15	452641	27 1/4" Roller Assembly
16	452642	25 1/4" Roller Assembly
17	452787	Retainer Rod Weldment- 28 1/2"
18	452145	Bolt Lock Weldment- 4 3/4"
19	452113	Bearing Tightener Weldment
20	94040	1 1/4" Pillow Block Assembly
21	452586	Extension- Conveyor Side
22	94568	Conveyor Shield
23	94567	3x2 Hinge 5t990
24	20473	Nut, 1/2" Heavy Hex
25	460526	Shield- Lower Cross Splash
26	452616	Idle Roller- 30"



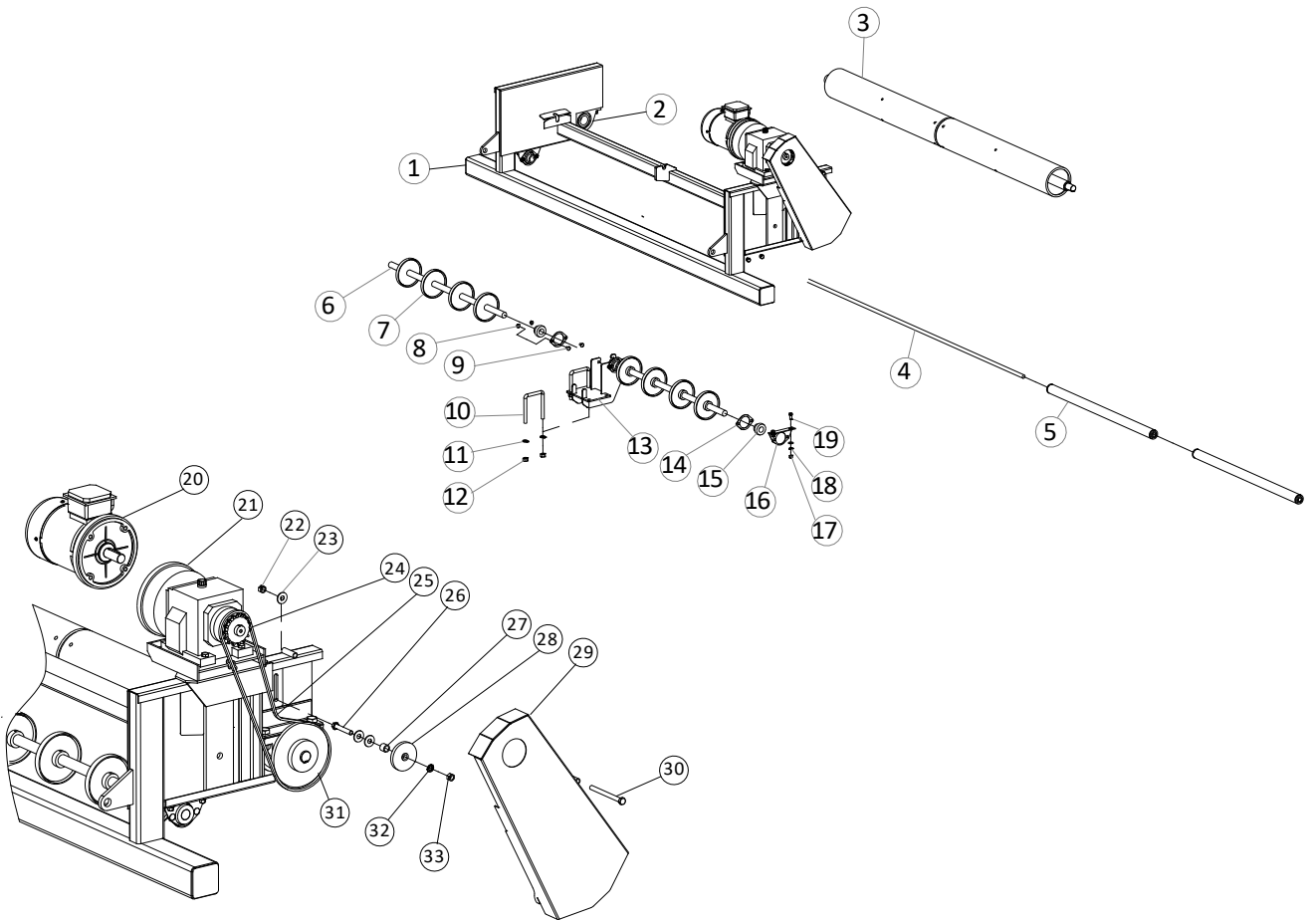
# Final Dirt Conveyor #431230



Item	Part No.	Description
1	431205	Weldment – Conveyor Frame
2	94413	Motor - Electric 2 HP 1ph
-	94418	Motor - Electric 2 HP 3ph
3	94626	Gearbox 20:1
4	94608	Arm – Motor Torque
5	452264	Gearbox Support - Nord
6	459360	36" Drive roller
7	452115	Bearing Tightener Bolt Weldment
8	94040	Pillow Block Bearing 1 1/2"
9	94567	3"x 2" Hinge
10	94568	Plastic Shield

Item	Part No.	Description
11	452374	Dirt Side Protector 90"
12	452770	36" Roller
13	452772	Rod Retainer Weldment 36"
14	459380	33 3/4" Roller
15	459375	Retainer Rod Weldment – 35 3/4"
16	452376	Dirt Side Protector – 60"
17	452145	Weldment – Lock Bolt 4 3/4"
18	452113	Weldment – Tightener Bearing
19	459355	36" Idler Roller
20	452290	Belt - Final Dirt Discharge

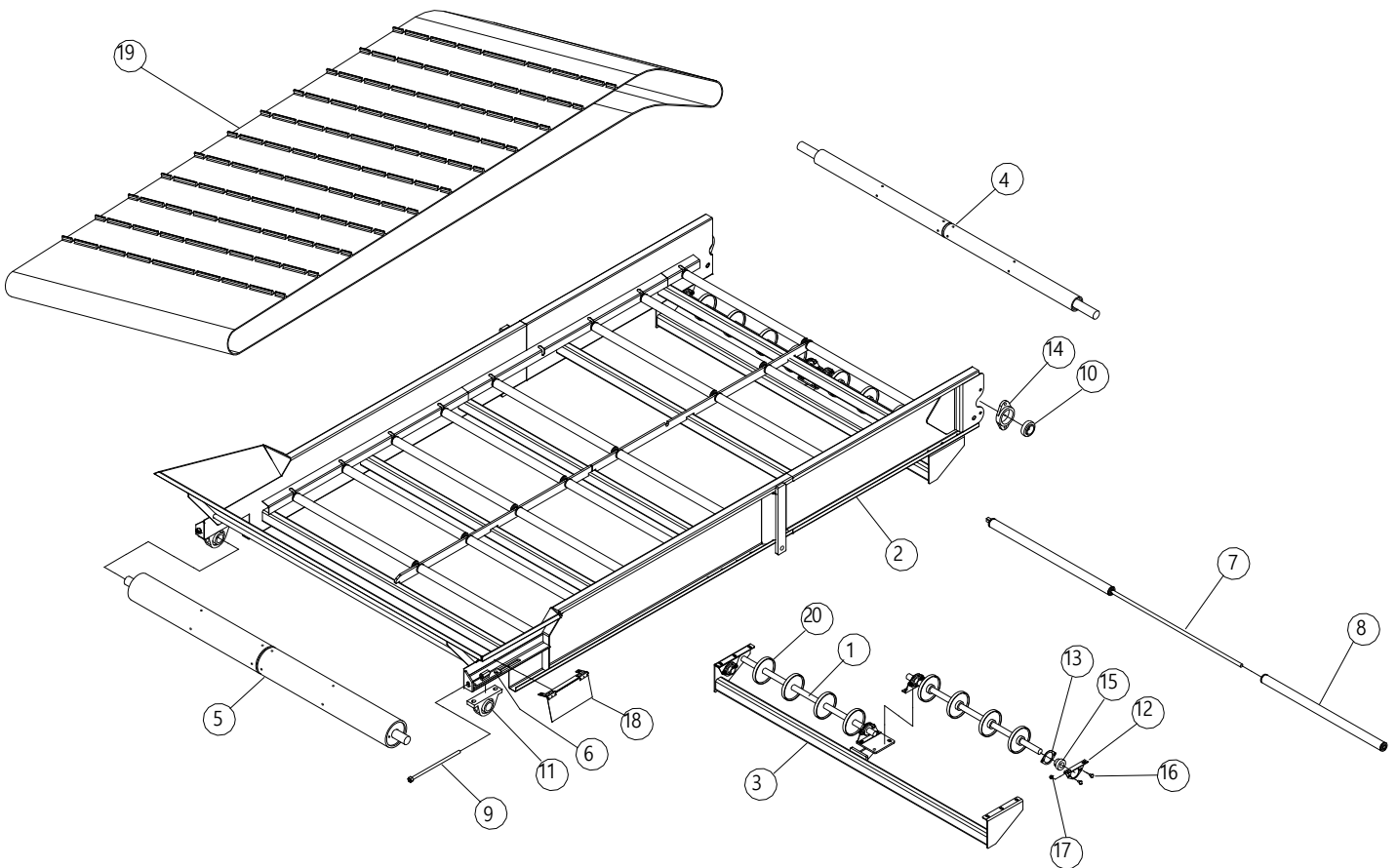
# Top Stationary Elevator #431938



Item	Part No.	Description
1	470600	Top Stationary Elevator Weldment
2	94045	Bearing w/ Pillow Block
3	431897	Drive Roller Assembly
4	431767	Retainer Rod
5	431765	Idler Assembly
6	452751	Carryback Shaft
7	452754	Carryback Roller Disc
8	20471	Flange Nut, 3/8"
9	20627	Carriage Bolt, 3/8 x 3/4"
10	21009	U-bolt, 5/8 x 4 x 5 1/2"
11	20506	Lock Washer, 5/8"
12	20406	Nut, 5/8"
13	430090	Carryback Roller Mount
14	94030	Bearing Flange, 1 1/4" Stamped
15	82041	Bearing, 1 1/4"
16	94031	Bearing flange, 1 1/4"
17	20403	Nut, 7/16"
18	20503	Lock Washer, 7/16"

Item	Part No.	Description
19	20043	Bolt, 7/16 x 1"
20	94419	Motor, 3 Phase
20	94414	Motor, 1 Phase
21	96500	Gearbox
22	20425	Centerlock Nut, 1/2"
23	20515	Washer, 1/2"
24	81188	Sprocket, 1 1/4" x 6015
25	453075	Chain, Elevator Drive
26	20056	Bolt, 1/2" x 3"
27	450145	Bushing
28	81215	Idler Sprocket, 1/2" x 6013
29	457095	Shield, Elevator Drive
30	20062	Bolt, 1/2" x 6"
31	94018	Sprocket, 1 3/8" x 6032
32	20504	Lock Washer, 7/16"
33	20404	Nut, 1/2"
NS	95049	Connector Link

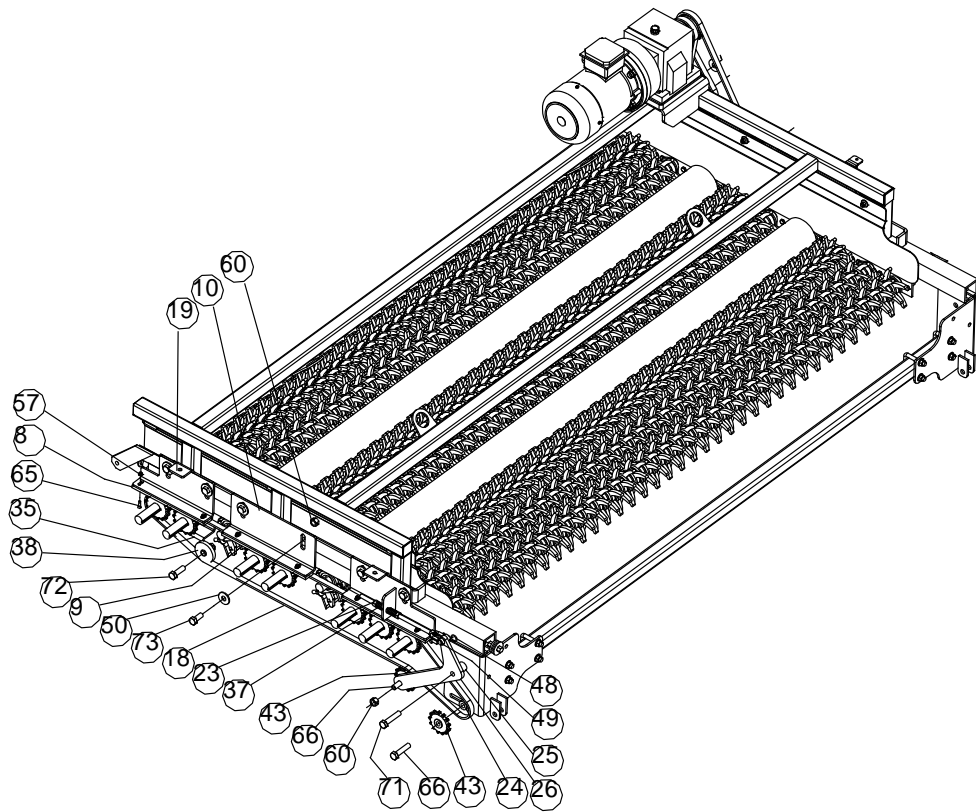
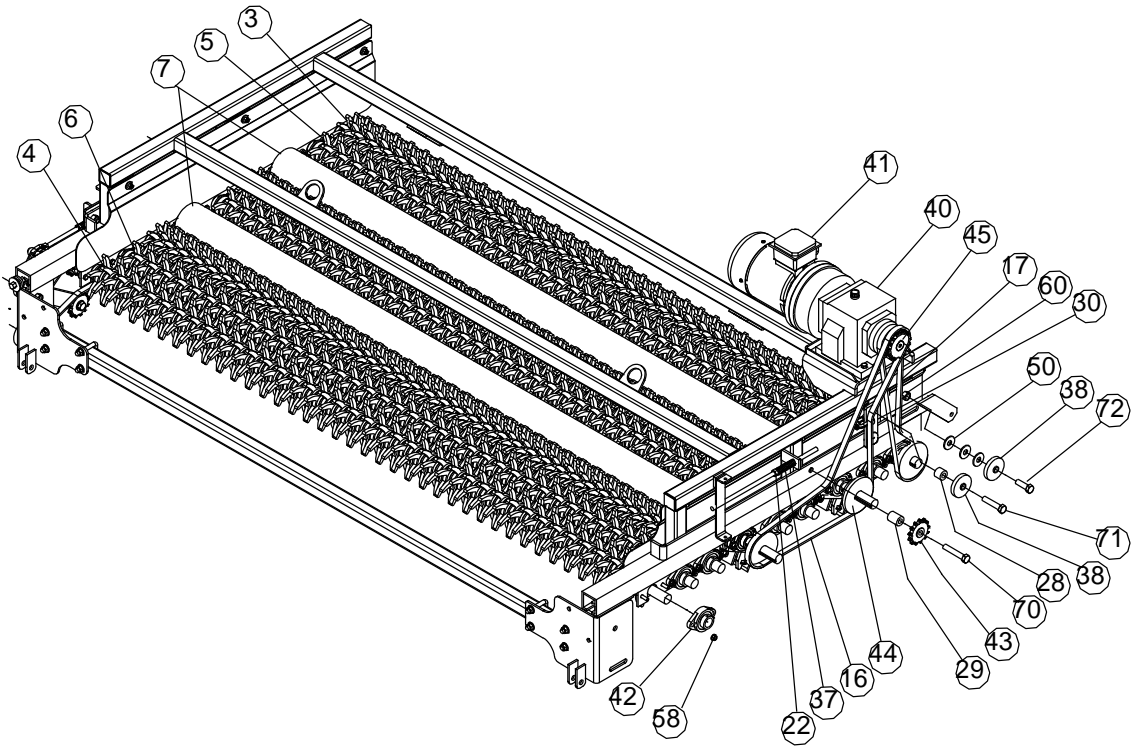
# Front Elevator #431960



Item	Part No.	Description
1	452751	Carryback Shaft
2	431962	Front Elevator
3	431921	Single Belt Carryback
4	431898	Elevator Roller Assembly
5	431899	Belt Idler
6	431820	Belt Tightener
7	431767	Retainer Rod
8	431765	Idler
9	430038	Adjustment Rod
10	95300	Bearing w/ Collar

Item	Part No.	Description
11	94045	Bearing w/ Pillow Block
12	94031	Bearing Flange, 1-1/4"
13	94030	Bearing Flange, 1-1/4" Stamped
14	82207	Bearing Housing
15	82041	Bearing, 1-1/4"
16	20627	Carriage Bolt, 3/8 x 3/4"
17	20471	Flange Nut, 3/8"
18	457085	Shield
19	94205	Belt, Elevator 80" x 376"
20	452754	Carryback Roller

# SS Table #431000



# SS Table Cont.

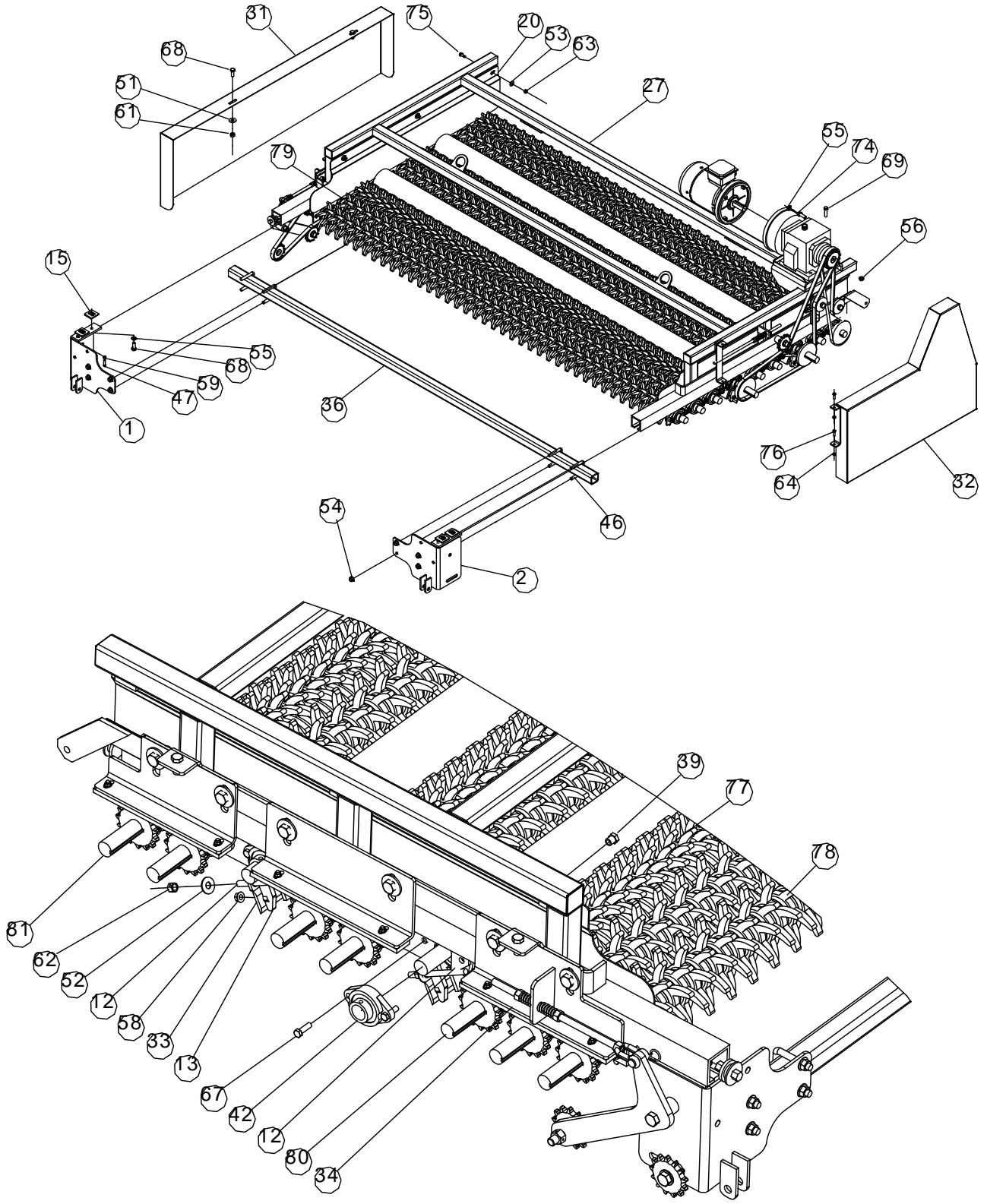
## #431000

Item	Part No.	Description
1	901420	Mount-RH
2	901415	Mount-LH
3	900455	12 Star Roller Assembly
4	460357	6 Star Roller Assembly
5	460356	6 Star Roller Assembly
6	460355	12 Star Roller Assembly
7	460350	Roller
8	458707	Plastic Strip
9	458706	Plastic Strip
10	458705	Chain Hold Down
11	452226	Scraper Tensioner - LH
12	452208	Scraper Tensioner - RH
13	452202	Scraper Mount - RH
14	452201	Scraper Mount - LH
15	431182	Chain Hold Down
16	431169	Chain, Steel Roller Drive
17	431168	Chain, Table Drive
18	431167	Chain, Roller Drive
19	431017	Chain Hold Down
20	431016	Inside Shield - RH
21	431015	Inside Shield - LH
22	431013	Spring Arm Adjuster
23	431010	Spring Arm Adjuster
24	431009	Spacer, Idler
25	431008	Spacer, Idler Arm
26	431007	Tensioner Arm
27	431005	Frame
28	431004	Tensioner Idler Spacer
29	431003	Idler Spacer

Item	Part No.	Description
30	431002	Chain Idler
31	430939	Shield, Roller Drive
32	430470	Shield, Table Drive
33	430275	Table Scraper Assembly
34	430225	Chain Hold Down
35	430212	Idler Mount
36	430211	Crossmember
37	96235	Scraper Spring
38	96023	Idler Sprocket
39	94612	Scraper Tensioner
40	96500	Gearbox
41	94419	Electric Motor – 3 Phase
-	94414	Electric Motor – 1 Phase
42	94091	Bearing, 1-1/4"
43	94001	Idler Sprocket, 6013 x 5/8"
44	81197	Sprocket, 6019 x 1-1/4"
45	81188	Sprocket, 6015 x 1-1/4"
46	21000	U-Bolt, 1/2 x 2 x 3"
47	20956	Set Screw, 5/16 x 1-1/4"
48	20913	Bridge Pin, #4
49	20887	Clevis Pin, 1/2 x 1-1/2
50	20536	Washer, 5/8"
51	20515	Washer, 1/2"
52	20514	Washer, 7/16"
53	20513	Washer, 3/8"
54	20505	Flange Nut, 1/2"
55	20504	Lock Washer, 1/2"
56	20481	Flange Nut, 7/16"
57	20475	Flange Nut, 1/4"

Item	Part	Description
58	20471	Flange Nut, 3/8"
59	20453	Jam Nut, 5/16"
60	20427	Centerlock Nut, 5/8"
61	20425	Centerlock Nut, 1/2"
62	20424	Centerlock Nut, 7/16"
63	20423	Centerlock Nut, 3/8"
64	20422	Centerlock Nut, 5/16"
65	20142	Countersunk Bolt
66	20124	Bolt, 5/8 x 2-3/4"
67	20120	Bolt, 3/8 x 1-1/4"
68	20118	Bolt, 1/2 x 1-1/4"
69	20117	Bolt, 7/16 x 1-3/8"
70	20068	Bolt, 5/8 x 3-1/2"
71	20067	Bolt, 5/8 x 3"
72	20065	Bolt, 5/8 x 2"
73	20064	Bolt, 5/8 x 1-1/2"
74	20052	Bolt, 1/2 x 1-1/2"
75	20029	Bolt, 3/8 x 1"
76	20016	Bolt, 5/16 x 1"
77	94095	6 Finger Star
78	94094	12 Finger Star
	94093	12 Finger Star Offset
79	94175	Offset Spacer, Star
80	460360	Roller Shaft, SS
81	900456	Roller Shaft, SS
82	90057	Set Collar, 1-1/4"
83	20541	Washer, 1-1/4"

# SS Table Cont. #431000



# SS Table Cont.

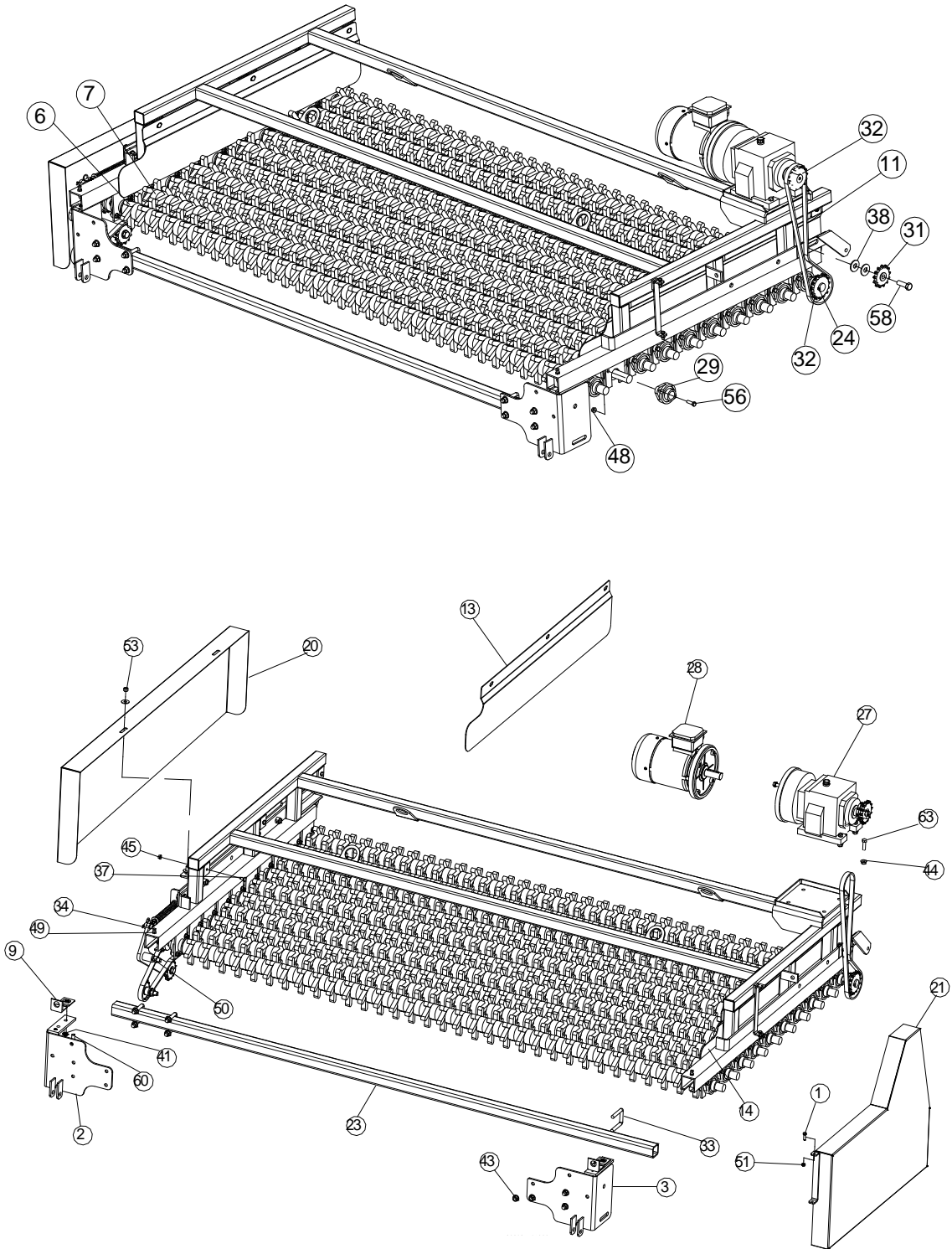
## #431000

Item	Part No.	Description
1	901420	Mount-RH
2	901415	Mount-LH
3	900455	12 Star Roller Assembly
4	460357	6 Star Roller Assembly
5	460356	6 Star Roller Assembly
6	460355	12 Star Roller Assembly
7	460350	Roller
8	458707	Plastic Strip
9	458706	Plastic Strip
10	458705	Chain Hold Down
11	452226	Scraper Tensioner - LH
12	452208	Scraper Tensioner - RH
13	452202	Scraper Mount - RH
14	452201	Scraper Mount - LH
15	431182	Chain Hold Down
16	431169	Chain, Steel Roller Drive
17	431168	Chain, Table Drive
18	431167	Chain, Roller Drive
19	431017	Chain Hold Down
20	431016	Inside Shield - RH
21	431015	Inside Shield - LH
22	431013	Spring Arm Adjuster
23	431010	Spring Arm Adjuster
24	431009	Spacer, Idler
25	431008	Spacer, Idler Arm
26	431007	Tensioner Arm
27	431005	Frame
28	431004	Tensioner Idler Spacer
29	431003	Idler Spacer

Ite	Part No.	Description
30	431002	Chain Idler
31	430939	Shield, Roller Drive
32	430470	Shield, Table Drive
33	430275	Table Scraper Assembly
34	430225	Chain Hold Down
35	430212	Idler Mount
36	430211	Crossmember
37	96235	Scraper Spring
38	96023	Idler Sprocket
39	94612	Scraper Tensioner
40	96500	Gearbox
41	94419	Electric Motor – 3 Phase
	94414	Electric Motor – 1 Phase
42	94091	Bearing, 1-1/4"
43	94001	Idler Sprocket, 6013 x
44	81197	Sprocket, 6019 x 1-1/4"
45	81188	Sprocket, 6015 x 1-1/4"
46	21000	U-Bolt, ½ x 2 x 3"
47	20956	Set Screw, 5/16 x 1-1/4"
48	20913	Bridge Pin, #4
49	20887	Clevis Pin, ½ x 1-1/2
50	20536	Washer, 5/8"
51	20515	Washer, ½"
52	20514	Washer, 7/16"
53	20513	Washer, 3/8"
54	20505	Flange Nut, ½"
55	20504	Lock Washer, ½"
56	20481	Flange Nut, 7/16"
57	20475	Flange Nut, ¼"

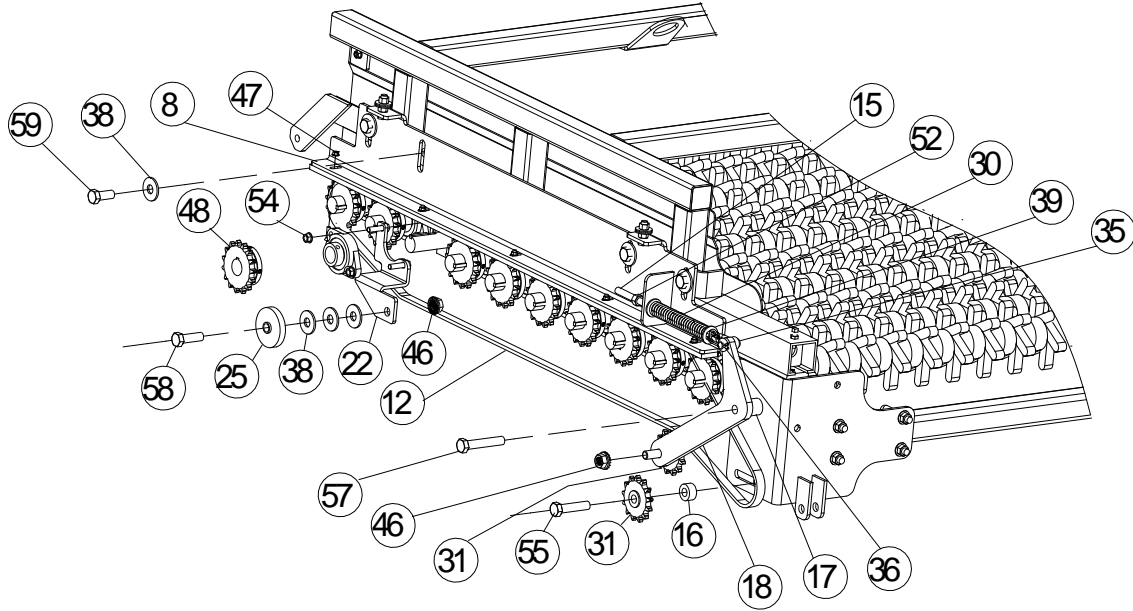
Item	Part No.	Description
58	20471	Flange Nut, 3/8"
59	20453	Jam Nut, 5/16"
60	20427	Centerlock Nut, 5/8"
61	20425	Centerlock Nut, ½"
62	20424	Centerlock Nut, 7/16"
63	20423	Centerlock Nut, 3/8"
64	20422	Centerlock Nut, 5/16"
65	20142	Countersunk Bolt
66	20124	Bolt, 5/8 x 2-3/4"
67	20120	Bolt, 3/8 x 1-1/4"
68	20118	Bolt, ½ x 1-1/4"
69	20117	Bolt, 7/16 x 1-3/4"
70	20068	Bolt, 5/8 x 3-1/2"
71	20067	Bolt, 5/8 x 3"
72	20065	Bolt, 5/8 x 2"
73	20064	Bolt, 5/8 x 1-1/2"
74	20052	Bolt, ½ x 1-1/2"
75	20029	Bolt, 3/8 x 1"
76	20016	Bolt, 5/16 x 1"
77	94095	6 Finger Star
78	94094	12 Finger Star
	94093	12 Finger Star Offset
79	94175	Offset Spacer, Star
80	460360	Roller Shaft, SS
81	900456	Roller Shaft, SS
82	90057	Set Collar, 1-1/4"
83	20541	Washer, 1-1/4"

# Quick Adjust Table #431180





# Quick Adjust Table Cont. #431180

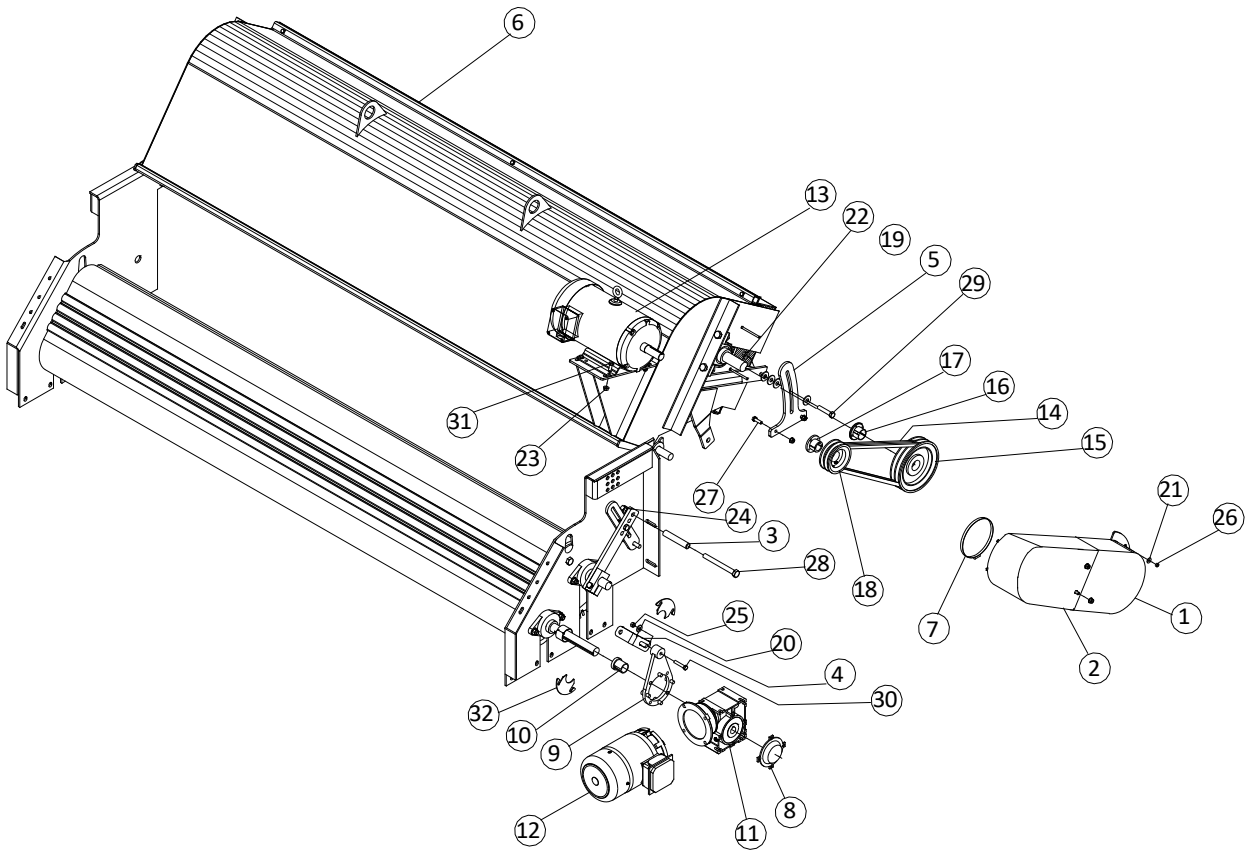


Item	Part No.	Description
1	20016	Bolt, 5/16 x 1"
2	901420	Table Mount - RH
3	901415	Table Mount - LH
4	458708	Plastic Chain
5	431930	Right Offset Assembly
6	431929	Left Offset Assembly
7	431928	Drive Roller Assembly
8	431688	Chain Hold Down
9	431182	Hold Down
10	431181	Frame, QA Table
11	431168	Chain, Table Drive
12	431167	Chain, Roller Drive
13	431016	Inside Shield - RH
14	431015	Inside Shield - LH
15	431010	Spring Arm Adjuster
16	431009	Spacer, Idler
17	431008	Spacer, Idler Arm
18	431007	Tensioner Arm
19	431003	Spacer
20	430939	Shield, Roller Drive
21	430470	Shield, Table Drive
22	430278	Roller Idler Mount

Item	Part	Description
23	430211	Crossmember Tube
24	351072	Key, ¼ x 1-1/2"
25	96023	Idler Sprocket, 6011 x
26	95048	Chain, #60
27	96500	Gearbox
28	94419	Motor - 3 Phase
-	94414	Motor - Single Phase
29	94091	Bearing, 1-1/4"
30	94016	Spring
31	94001	Idler Sprocket, 6013 x
32	81188	Sprocket, 6015 x 1-1/4"
33	21000	U-Bolt, ½ x 2 x 3"
34	20956	Set Screw, 5/16 x 1-1/4"
35	20913	Bridge Pin, #4
36	20887	Clevis Pin, 3/16 x 2
37	20761	Carriage Bolt, 5/16 x ¾"
38	20536	Washer, 5/8"
39	20515	Washer, ½"
40	20514	Washer, 7/16"
41	20504	Lock Washer, ½"
42	20503	Lock Washer, 7/16"
43	20485	Flange Nut, ½"

Item	Part	Description
44	20481	Flange Nut, 7/16"
45	20479	Flange Nut, 5/16"
46	20476	Flange Nut, 5/8"
47	20475	Flange Nut, ¼"
48	20471	Flange Nut, 3/8"
49	20453	Jam Nut, 5/16"
50	20427	Centerlock Nut, 5/8"
51	20422	Centerlock Nut,
52	20404	Nut, ½"
53	20403	Nut, 7/16"
54	20142	Countersunk Bolt
55	20124	Bolt, 5/8 x 2-3/4"
56	20120	Bolt, 3/8 x 1-1/4"
57	20067	Bolt, 5/8 x 3"
58	20065	Bolt, 5/8 x 2"
59	20064	Bolt, 5/8 x 1-1/4"
60	20050	Bolt, ½ x 1"
61	20042	Bolt, 7/16 x 2"
62	20030	Bolt, 3/8 x 1-1/2"
63	20023	Bolt, 7/16 x 1-1/2"

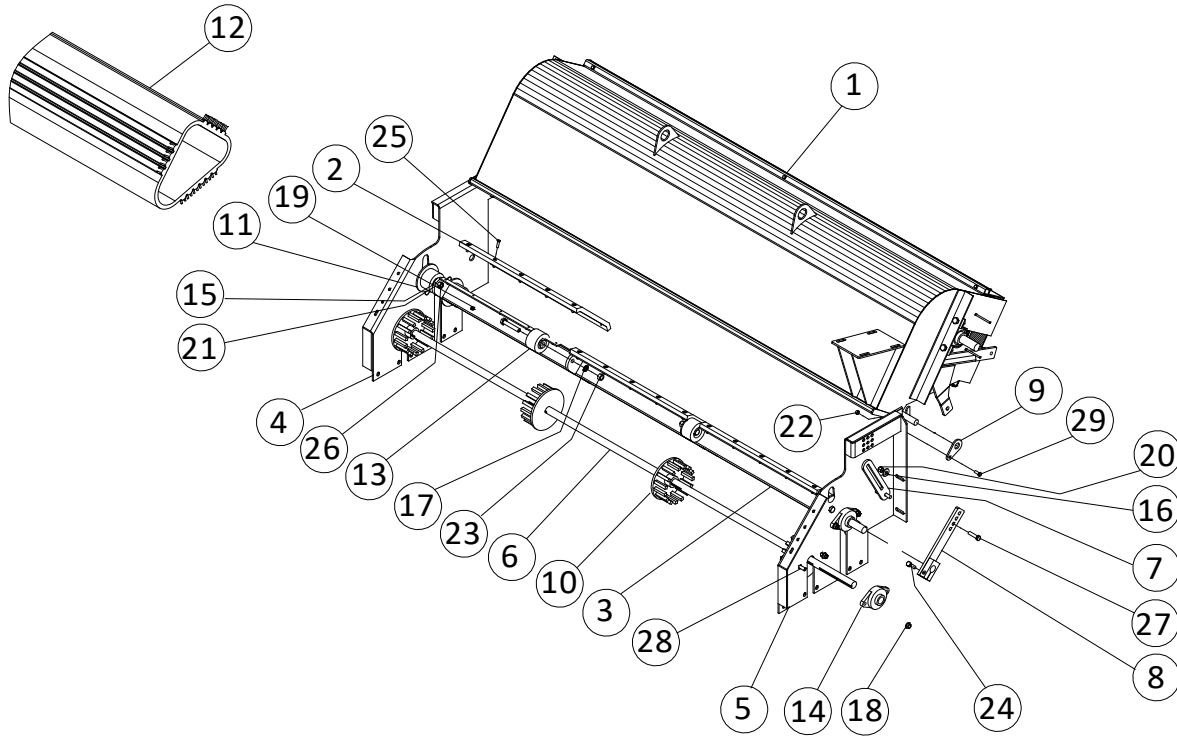
# Pegbelt and Blower Drive #4551



Item	Part No.	Description
1	459297	Shield - Male
2	459292	Shield - Female
3	459185	Handle - Pipe
4	431177	Support
5	431113	Mount, Fan Angle Adjustment
6	430990	Pegbelt and Blower Assembly
7	96152	Hose Clamp
8	94609	Gearbox Cover
9	94608	Torque Arm
10	94606	Reducer Bushing, 1-1/4"
11	94603	Gearbox
12	94429	Motor - 3 Phase
13	94426	Motor - 3 Phase
-	94425	Motor - Single Phase
14	94034	Belt, Drive
15	94032	Double Pulley
16	81483	Hub

Item	Part No.	Description
17	81478	Double Hub
18	94047	Double Pulley
19	20515	Washer, 1/2"
20	20513	Washer, 3/8"
21	20511	Washer, 1/4"
22	20505	Flange Nut, 1/2"
23	20471	Flange Nut, 3/8"
24	20427	Centerlock Nut, 5/8"
25	20402	Nut, 3/8"
26	20400	Nut, 1/4"
27	20120	Bolt, 3/8 x 1-1/4"
28	20073	Bolt, 5/8 x 6"
29	20055	Bolt, 1/2 x 2-1/2"
30	20031	Bolt, 3/8 x 2"
31	20029	Bolt, 3/8 x 1"
32	451391	Guard, Gearbox

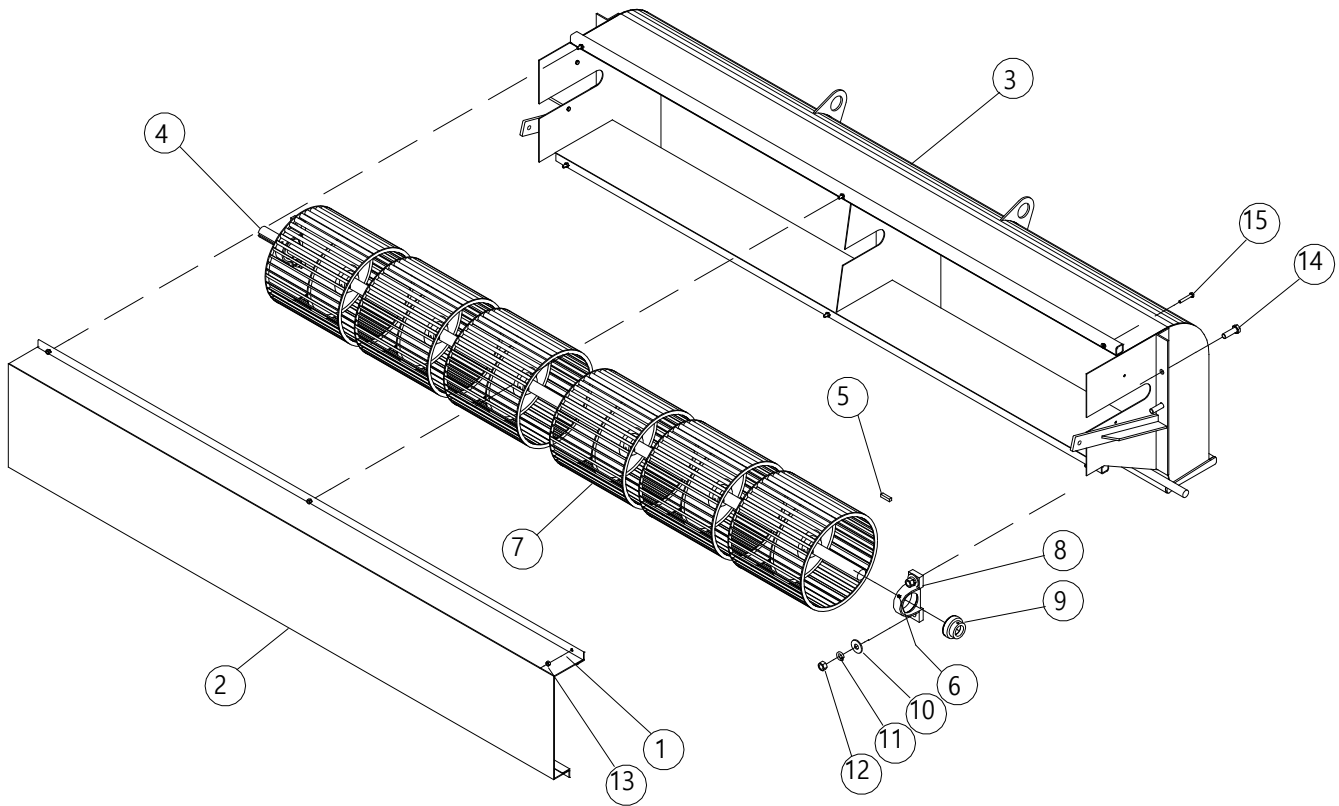
# Pegbelt #430990



Item	Part No.	Description
1	459800	Blower Fan Assembly
2	459740	Peg Belt Plastic
3	459730	Frame
4	459720	Side Mount - Right
5	459710	Side Mount - Left
6	459466	Peg Belt Shaft
7	459188	Adjustment Lock
8	459180	Handle
9	459035	Retainer
10	94184	Sprocket, Belt
11	94183	Flange Roller
12	94114	Peg Belt
13	94067	Rubber Roller
14	82120	Bearing, 1-1/4"
15	20536	Washer, 5/8"

Item	Part No.	Description
16	20515	Washer, 1/2"
17	20506	Lock Washer, 5/8"
18	20505	Flange Nut, 1/2"
19	20484	Nut, 5/16" Nylock
20	20483	Nut, 1/2" Nylock
21	20427	Centerlock Nut, 5/8"
22	20423	Centerlock Nut, 3/8"
23	20406	Nut, 5/8"
24	20152	Bolt, 1/2 x 1-3/4"
25	20133	Countersunk Bolt
26	20068	Bolt, 5/8 x 3-1/2"
27	20053	Bolt, 1/2 x 2"
28	20052	Bolt, 1/2 x 1-1/2"
29	20029	Bolt, 3/8 x 1"

# Blower #459800



Item	Part No.	Description
1	20501	Lock Washer, 5/16"
2	459835	Screen
3	459820	Blower Case
4	459817	Blower Shaft
5	351074	Key, 3/8 x 1"
6	95036	Grease Fitting
7	94186	Blower Wheel
8	82221	Pillow Block

Item	Part No.	Description
9	82045	Bearing w/ Collar, 1-7/16"
10	20536	Washer, 5/8"
11	20506	Lock Washer, 5/8"
12	20406	Nut, 5/8"
13	20401	Nut, 5/16"
14	20065	Bolt, 5/8 x 2"
15	20018	Bolt, 5/16 x 2"

# Motors, Gearboxes, And Conveyor Specifications

Conveyor Assembly p/n	Final Conveyor Specs.	Motor p/n 3 Phase	Motor p/n 1 phase	Motor (HP)	Electrical Panel Reference Number	Start Up Stage	Required Amps (Single Phase)	Required Amps 3 Phase Low (204V)	Required Amps 3 Phase High (480V)	Shaft Size	Gearbox p/n	Gearbox Ratio
431939	Elevator - VFD	94419	94414	3	1	1	16.8	9.1	4.2	1.125	96500	20.95:1
431000	Dirt Table - VFD	94419	94414	3	2	1	16.8	9.1	4.2	1.125	96500	20.95:2
460525	Potato Conveyor - (Optional Reversing)	94417	94412	1.5	3	2	9.6	5	2.7	1.25	94603	15:1
431230	Dirt Conveyor - (Optional Reversing)	94418	94413	2	4	2	10	6.7	3.1	1.25	94605	20:1
430990	Peg Belt - VFD	94418	94430	2	5	2	10	6.7	3.1	1.25	94603	15:1
459800	Peg Fan	94426	94425	5	6	2	23	13.9	6.7	1.125	-	-
Total Amps Required							86.2	50.5	47.2	24		

**NOTE:** Custom manufactured machines may be configured differently than listed above. Consult a licensed electrician for any electrical service on the machine.

**NOTE:** Use only food grade oil in gearboxes.

Conveyor Description	Conveyor Assembly #	Belt Size & Length	Belt #
Elevator	431939	80" x 376"	94205
Dirt Conveyor	431230	36" x 312.5"	452290
Potato Conveyor	460525	30" x 312.5"	460527
Peg Belt	430990	-	94114

# NOTES





Box 378, Minto, ND 58261  
(800) 437-8205  
(701) 248-3286  
Fax: (701)248-3070  
[www.harriston-mayo.com](http://www.harriston-mayo.com)  
[harriston@invisimax.com](mailto:harriston@invisimax.com)

PRINTED IN USA  
ISSUE DATE: AUGUST 2018